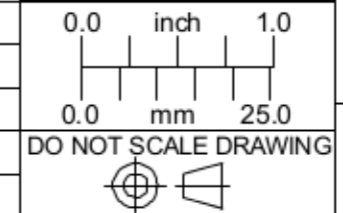


OUTLINE

Lens Specifications - NMV - 75M1			
Specifications	Value	1/2"	1/3"
Focal Length	f = 75mm		
Maximum diameter (Ratio)	F = 1.8:1 ~ 16 ~ Close		
Picture Size	12.8 x 9.6mm	8.8 x 6.6mm	6.4 x 4.8mm
Angle - Vertical	7.3 deg.	5.03deg.	3.66 deg.
Horizontal	9.7 deg.	6.68 deg.	4.87deg.
Diagonal	12.0 deg.	8.33deg	6.08 deg.
Distortion (TV)	-0.2%	-0.05%	-0.02%
Minimum Focus Distance	1.0m		
Flange Back	17.526mm in air		
Back Focus	14.5mm in air		
Filter Screw Size	M46 x 0.75		
Effective Diameter - Front	41.2mm dia.		
- Rear	16.0mm dia.		
Mount	C-Mount		
Exit Pupil	-55.3mm dia.		
Temperature Range	- 10 ~ + 45 deg. C		
Strong Temperature Range	- 40 ~ + 60 deg. C		

UNLESS OTHERWISE SPECIFIED DIMENSIONS ARE IN INCHES AND INCLUDE CHEMICALLY APPLIED OR PLATED FINISHES

SCALE: 1.5:1
 WEIGHT: See Table
 DR: BE
 CH:
 PROJECT #: E2338
 DATE DR: 7/13/2007



Pyramid Imaging, Inc.
 4951 E Adamo Dr. Suite 224
 Tampa, FL 33605
 HUBZone & ISO9001:2008 Certified

Phone: 813-984-0125
 Fax: 866-874-9521
 Sales@PyramidImaging.com
 www.PyramidImaging.com

LENS, 75.0mm FL, , 1.0", f/1.4		
SIZE	NMV - 75M1	REV
B		A
SHEET 1 OF 1		