

OUTLINE

| Lens Specifications - SWIR-35 | | | |
|-------------------------------|------------------------|-------------|-------------|
| Specifications | Value | 1/2" | 1/3" |
| Focal Length | f = 35mm | | |
| Maximum diameter (Ratio) | F = 1.4:1 ~ 16 ~ Close | | |
| Picture Size | 12.8 x 9.6mm | 8.8 x 6.6mm | 6.4 x 4.8mm |
| Angle - Vertical | 15.8 deg. | 10.8deg. | 7.85 deg. |
| Horizontal | 20.9 deg. | 14.4 deg. | 10.5deg. |
| Diagonal | 26.1 deg. | 18.0deg | 13.1 deg. |
| Distortion (TV) | -0.5% | -0.3% | -0.1% |
| Minimum Focus Distance | 0.3m | | |
| Flange Back | 17.526mm in air | | |
| Back Focus | 16.8mm in air | | |
| Filter Screw Size | M35.5 x 0.5 | | |
| Effective Diameter - Front | 24.3mm dia. | | |
| - Rear | 19.1mm dia. | | |
| Mount | C-Mount | | |
| Exit Pupil | -57.9mm dia. | | |
| Temperature Range | - 10 ~ + 45 deg. C | | |
| Strong Temperature Range | - 40 ~ + 60 deg. C | | |

UNLESS OTHERWISE SPECIFIED DIMENSIONS ARE IN INCHES AND INCLUDE CHEMICALLY APPLIED OR PLATED FINISHES

SCALE: 1.5:1

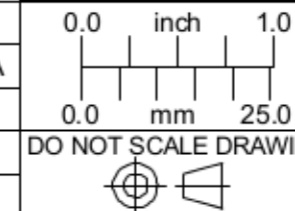
WEIGHT: See Table

DR: R. PODLENA

CH:

PROJECT #:

DATE DR: 6/3/2008



Pyramid Imaging, Inc.
4951 E Adamo Dr. Suite 224
Tampa, FL 33605
HUBZone & ISO9001:2008 Certified

Phone: 813-984-0125
Fax: 866-874-9521
Sales@PyramidImaging.com
www.PyramidImaging.com

LENS, 35mm FL, 1", f/1.4, 700-1900nm

SIZE
B

SWIR-35

SHEET 1 OF 1

REV
A