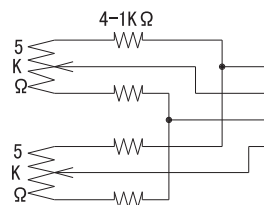


① IRIS CABLE

(+) RED	INPUT VOLTAGE
(-) BLACK	GROUND
WHITE	VIDEO SIGNAL
GREEN	REMOTE CONTROL

② MOTOR CABLE

(+) GREEN	FOCUS NEAR
(+) BLACK	FOCUS FAR
(+) YELLOW	ZOOM IN
(+) RED	ZOOM OUT



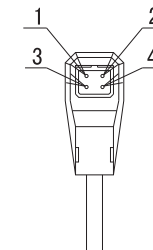
(+) BROWN	POT. SUPPLY
(+) BLUE	FOCUS ERROR
(-) WHITE	POT. RETURN
(-) GRAY	ZOOM ERROR

SPECIFICATION

1. USE	FOR 1/2" COLOR , B/W CAMERA		
2. FOCAL LENGTH	f=15~375mm		
3. IRIS RANGE	F= 2.3 ~ 360		
4. IMAGE SIZE	φ 8 (6.4 x 4.8)		
5. BACK FOCAL LENGTH	24	mm in air	
6. FLANGE FOCAL LENGTH	17.526	mm in air	
7. FOCUS RANGE	∞ ~ 2.5 m		
8. FIELD ANGLE	DIA.	(W)	(T)
		28.7 °	1.24 °
	HOL.	23.2 °	0.99 °
	VER.	17.6 °	0.75 °
9. DISTORTION (TV)	0.3 %	0.4 %	
10. LENS CONSTRUCTION	12 GROUPS 16 ELEMENTS		
11. CLEAR APERTURE	FRONT	φ 104	REAR φ 11.7
12. WEIGHT	2.58Kg (DP)		

DC (DIRECT CONTROL)

DRIVE	RESISTOR	190 Ω	(20° C)
	COIL COLOR	RED (+)	4pin
BRAKE	RESISTOR	1150 Ω	(20° C)
		COLOR	BLACK
			3pin
DRIVE	RESISTOR	1150 Ω	(20° C)
		COLOR	YELLOW(+)
			2pin
		GREEN	1pin
VOLT.	OPEN	LESS THAN +4V	
	CLOSE	OVER THAN 0V	
		W/CLOSING SPRING	



1/2" F2.3/15-375mm

CP962D, DP

CP962A, AP

CP962XA, XAP