

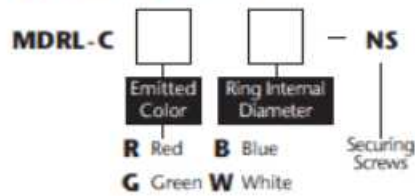
# Direct Ring Illumination MDRL-NS Series



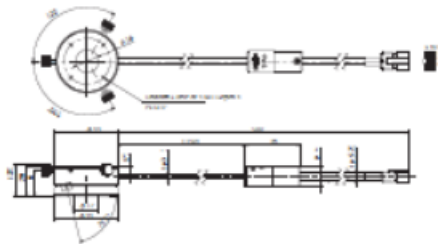
Securing screws allow these ring lights to be conveniently coupled with MORITEX MML lenses.



## Explanation of Model Code



## MDRL-CR (CG,CB,CW) 16-NS



Model	Emitted Color	Maximum Rated Current IFM(A)	Ring Internal Diameter (mm)	Ring External Diameter (mm)	Lighting Angle	Weight (g)	LED Controller
MDRL-CR16-NS	● Red	0.15	ø16	ø44	75.5°	70	MLEK-A080
★ MDRL-CG16-NS	● Green	0.24	ø16	ø44	75.5°	70	MLEK-A080
★ MDRL-CB16-NS	● Blue	0.24	ø16	ø44	75.5°	70	MLEK-A080
MDRL-CW16-NS	○ White	0.24	ø16	ø44	75.5°	70	MLEK-A080

\* LED Controller on P.152-156

\* In case of a plurality of LED illuminations used, please check the "Selection Criteria LED Controller" on P.99.

★Made to order products.



945 East 11<sup>th</sup> Avenue Tampa, FL 33605

Phone: (813) 984-0125

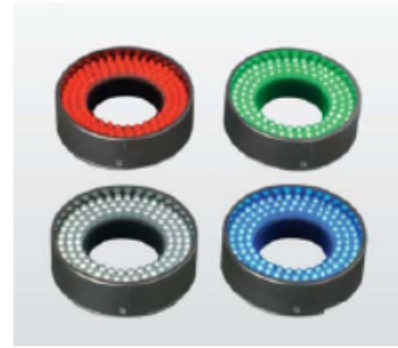
Contact: Sales@pyramidimaging.com

<https://pyramidimaging.com>

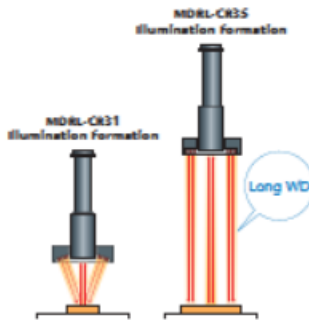
## Long working distances MDRL-C□35

- This fully direct, long working distance illumination design makes a clear distinction from the conventional direct ring series
- The recommended working distance is 65 mm or greater. If the object surface is reflective, a working distance of about 200 mm is recommended.

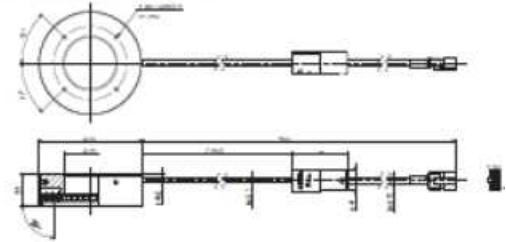
\* Be sure to check performance with a demonstration model before making a selection.



## Illumination Structure

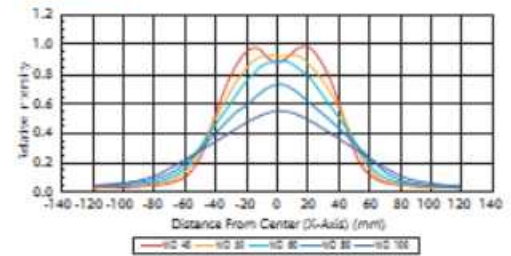


## MDRL-CR (CG,CB,CW) 35

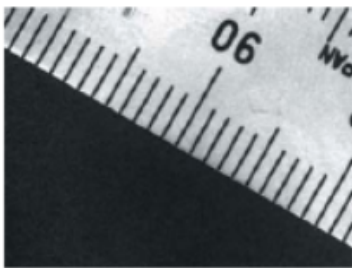


## Light Distribution Characteristics

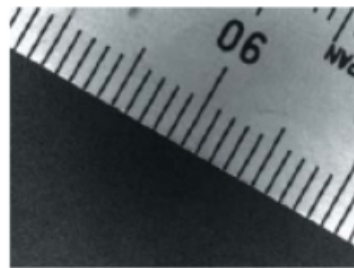
### MDRL-CW35



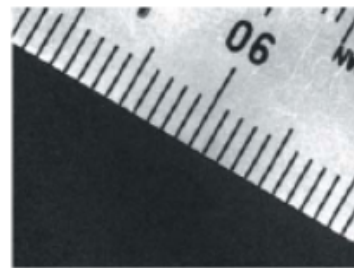
## Sample Images



WD=40mm **MDRL-CR31**  
Uniformly Illuminated



WD=40mm **MDRL-CR35**  
Not Much Light at Short WD



WD=60mm **MDRL-CR35**  
Full of Light at This WD

Model	Emitted Color	Maximum Rated Current IFM(A)	Ring Internal Diameter (mm)	Ring External Diameter (mm)	Lighting Angle	Weight (g)	LED Controller
MDRL-CR35	● Red	0.34	ø35	ø70	90°	150	MLEK-A080
★ MDRL-CG35	● Green	0.52	ø35	ø70	90°	150	MLEK-A080
MDRL-CB35	● Blue	0.52	ø35	ø70	90°	150	MLEK-A080
MDRL-CW35	○ White	0.52	ø35	ø70	90°	150	MLEK-A080

\* LED Controller on P.152~156

\* In case of a plurality of LED illuminations used, please check the "Selection Criteria LED Controller" on P.99.

★Made to order products.



945 East 11<sup>th</sup> Avenue Tampa, FL 33605

Phone: (813) 984-0125

Contact: Sales@pyramidimaging.com

<https://pyramidimaging.com>

Pyramid Imaging