



**Allison Park Group (APG)** designs and manufactures camera and lighting enclosures for harsh industrial environments. We offer housings for food (FDA) applications, washdown, and explosive environments. We also produce custom and OEM design solutions.






**apg**

Allison Park Group, Inc.

4055 Alpha Drive,  
Allison Park, PA 15101  
[www.apgvision.com](http://www.apgvision.com)

**412.487.8211**

Fax: 412.486.3157

-  [linkedin.com/company/allison-park-group-inc](https://www.linkedin.com/company/allison-park-group-inc)
-  [twitter.com/apgvision](https://twitter.com/apgvision)
-  [facebook.com/pg/AllisonParkGroupInc](https://www.facebook.com/pg/AllisonParkGroupInc)



*Industrial Enclosures for:*

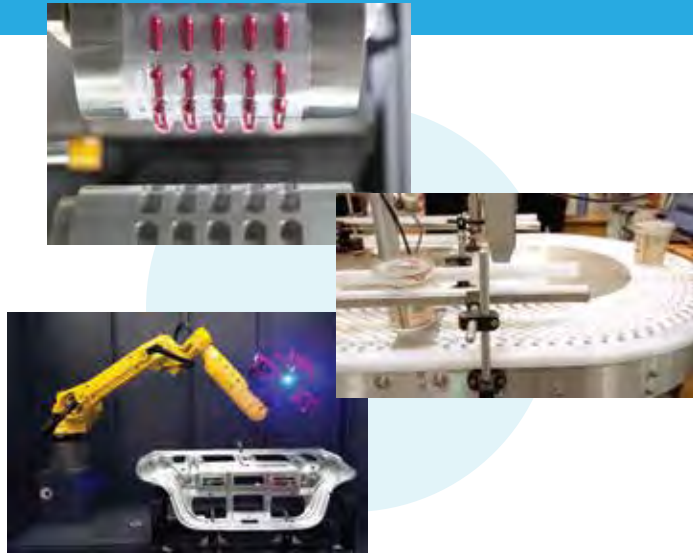
- Cameras • Lighting
- Pan & Tilt Mounts
- Custom Applications



*Design Engineering and Manufacturing  
Camera and Lighting Enclosures  
for Industrial Environments*

**Allison Park Group (APG)** manufactures camera and lighting enclosures for harsh industrial environments. **APG** supports cameras from most manufacturers, including: Cognex, Keyence, PPT, and Vision Components. **APG** offers housings for explosion-proof environments with purge pressurization systems, food (FDA) applications, and washdown environments. **APG** also offers custom enclosures and OEM design solutions.

Our customers include such companies as: ATI Metals, Bic Corporation, Bristol-Meyers Squibb, Cognex, Fuji Film, GE, Honda, Kraft, Nestle, Omron, PPG Industries, Textron, Timken, Unilever, and Weyerhaeuser.



## Increased Protection

### 24C

- 6061 aluminum construction
- Lightweight design
- Designed for robotic applications
- Tool-less access to camera
- Glass or acrylic viewport
- Multiple barrel lengths available
- Air cooling/Air curtain option included



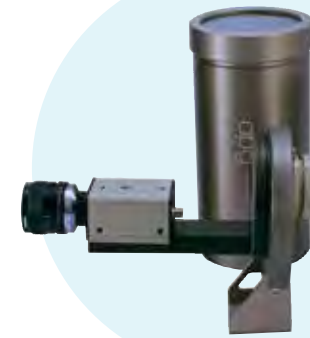
### 25R

- Constructed for corrosive environments
- Designed for smaller cameras
- Meets IP67 standards
- All 316 stainless steel construction
- Available in various barrel lengths
- Comes standard with glass or acrylic viewport
- Comes with two IP68 rated cord grips



### 35C

- Constructed for corrosive environments
- 3 axis (pan, tilt, roll) mounting
- Works with many cameras and vision systems
- Meets IP65 standards (with standard faceplate)
- Stainless steel/nickel plated aluminum construction
- Easy sensor mounting, aiming and lens adjustment
- Works with premade cables



### 47C

- 3 axis (pan, tilt, roll) adjustment built into enclosure
- Works with many larger cameras and sensors
- Meets IP65 standards (with standard faceplate)
- Hardcoat anodized aluminum construction
- Tool-less access to camera for adjustments
- Works with premade cables

## Basic Protection



### 22C

- 6061 aluminum construction
- Lightweight design
- Designed for robotic applications
- Tool-less access to camera
- Glass or acrylic viewport
- Longer barrels available to support longer lenses
- Optional Hirose bulkhead fitting (for quick disconnect) or drillable cord grip (for use with premade cables)
- Air cooling/Air curtain option available
- Can be purchased in a variety of colors and finishes
- Pan & Tilt Mounts optional



### 30D

- Built to provide basic protection
- Supports over 40 different inline cameras
- Meets NEMA 12 standards
- 304 stainless steel construction
- Camera to viewport distance can be changed to handle long or wide angle lenses
- Comes standard with glass or acrylic viewport
- Works with premade cables
- Pan & Tilt Mounts optional



### L15

- Constructed for dusty, dirty environments
- Designed for vertical layout cameras
- Meets NEMA 12 and IP61 standards
- 304 stainless steel construction
- Comes standard with glass or polycarbonate viewport
- Works with premade cables

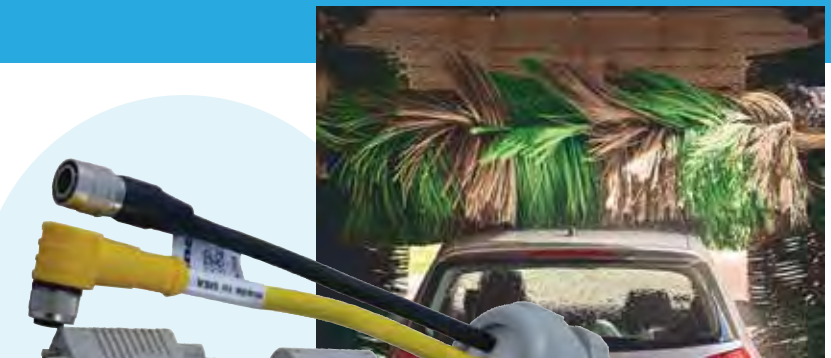


## Cable Glands



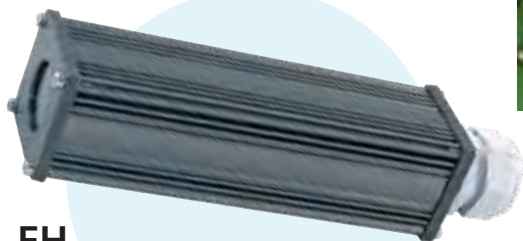
### PG16, PG21, PG29, PG36

- No need to remove and reinstall connectors from cables for installation
- Creates a liquid tight seal around cables
- Protection rating: IP67; NEMA 4X if cable diameter = insert hole diameter
- Protection rating: IP65; NEMA 3 if cable diameter is up to 10% less than insert hole diameter
- Body available in polyamide, nickel plated brass, or 316 stainless steel
- Cable gland insert available in TPE
- Sealing washer available in Polyethylene, Viton™, BUNA-N, or Silicone



### Cord Grip Dimension mm (in.)

	Polyamide	Metal & Brass
PG16	27.5 (1.1)	33.0 (1.3)
PG21	32.0 (1.3)	40.0 (1.6)
PG29	35.3 (1.4)	44.0 (1.7)
PG36	37.0 (1.5)	47.0 (1.8)



### EH

- Built to provide basic protection
- Meets NEMA 12 standards
- Works with premade cables
- Pan & Tilt Mounts optional

## Food Grade

### 30S

- Built for highly corrosive environments
- Supports over 40 different inline cameras
- Meets IP65 standards (contact APG for IP66 options)
- 100% 316 stainless steel construction
- Designed to work in food applications
- Camera to viewport distance can be changed to handle long or wide angle lenses
- Comes standard with glass or acrylic viewport
- Works with premade cables
- Pan & Tilt Mounts optional



### 42S

- Built for highly corrosive environments
- Supports Cognex DataMan 500 and Cognex DataMan 300 cameras
- Meets IP65 standards (contact APG for IP66 options)
- 100% 316 stainless steel construction
- Designed to work in food applications
- Camera to viewport distance can be changed to handle long or wide angle lenses
- Comes standard with glass or acrylic viewport
- Works with premade cables
- Pan & Tilt Mounts optional



### L7

- Built for highly corrosive environments
- Designed for vertical layout cameras
- Meets IP66 standards (depending on configuration)
- 316 stainless steel construction
- Designed to work in food applications
- Camera to viewport distance can be changed to handle long or wide angle lenses
- Comes standard with glass or polycarbonate viewport
- Works with premade cables



### LD

- Built for highly corrosive environments
- Designed for the Balluf BVS or Cognex IS7000 cameras
- Meets IP66 standards (depending on configuration)
- 316 stainless steel construction
- Designed to work in food applications
- Comes standard with an acrylic viewport
- Works with premade cables

## Custom



### Custom OEM Solutions

There are times when it is appropriate to modify our standard enclosures to meet particular and specific needs, or we might design an entirely new enclosure. Here at **Allison Park Group (APG)**, we make it easy for design engineers to get the enclosures they need for their particular application.

#### Modifications

Because of our modular designs, it is often possible to satisfy most camera and lighting packaging requirements with our standard parts. However, there might be a time when a specific requirement is needed. We are here to help.

Assistance can be as simple as planning the proper panel space and accessories or as complex as creating a new enclosure design. We provide services to modify our parts to meet your special requirements.

Our engineering staff is available to speak directly with you to answer your technical questions. Contact us.

#### Industrial Design

Our staff can provide a custom look for your product using industrial design techniques.

By starting with our standard enclosures and accessories and modifying particular features such as viewports, camera arms, and mounting plates, we can create any style of enclosure. Because we start with our standard products, we can retain important features such as anodization and plating needed for protection in harsh environments.

## Pan & Tilt Mounts

### Pan & Tilt Mounts

- Stainless steel construction
- 2 axis (pan, tilt) mounting
- Tilt axis swings throughout 360 degrees of arc (if foot is reversed).
- Foot and camera arm are 304 stainless steel or aluminum
- All fasteners are stainless steel
- Fasteners to mount the camera are included



Laser



Barcode Reader



Enclosure

## Industrial Stands

**Allison Park Group (APG)** manufactures custom stands to accommodate cameras, lighting, sensors, barcode readers, monitors, lasers, machine vision inspection, and security. **APG** stands are utilized in the following industries but not limited to: food and beverage, pharmaceuticals, robotics, security, steel, automobile, and tire manufacturing. Our stands and mounts can be designed and manufactured from carbon steel, aluminum, and stainless steel.



## Liquid Cooled



### CC

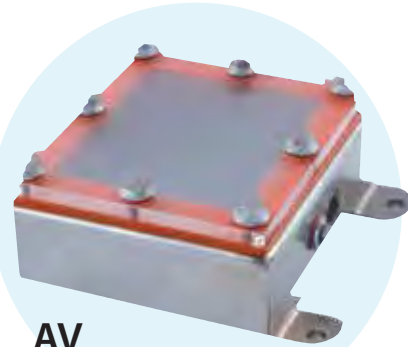
- All 316 stainless steel constructions
- Designed for high temperature applications
- Silicone gaskets
- Drillable cord grip for premade cables

## Assemblies

Allison Park Group (APG) offers several enclosures and mount assembly options for a variety of applications. It is extremely important that camera or light assemblies are protected against the elements of any harsh environment. We have over 25 Years of Professional Grade Prototype camera and lighting assembly experience including component integration. Our technicians are committed to excellence, quality, and on time fulfillment. APG is fully compliant with REACH and ROHS. APG enclosures are stocked in a variety of sizes and materials, or we can engineer a custom design to customer specifications.

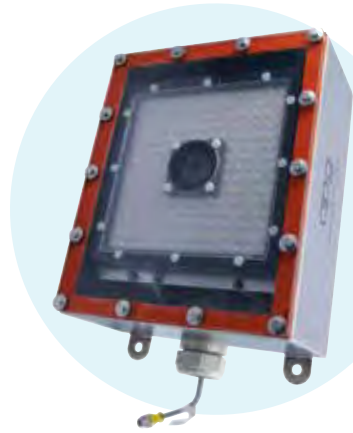


## Lighting



### AV

- Meets NEMA 4X standards
- 316 stainless steel construction
- Polycarbonate viewport
- Single point Pan & Tilt Mount
- Built for highly corrosive locations
- Highly impact resistant
- Designed for food environments
- Comes in a multitude of sizes



### SL

- Built for highly corrosive environments
- Designed for vertical layout cameras with large ringlights (up to 7" x 7")
- Meets IP65 standards
- Rugged 316 stainless steel construction
- Designed to work in food applications
- Camera to viewport distance can be changed to accommodate shorter or longer lenses
- Comes standard with acrylic viewport
- Works with premade cables
- Position of both camera and ringlight is adjustable within enclosure



### Camera Enclosures

- All of our camera enclosures have brackets for internally mounting ringlights with the cameras
- We also make brackets for mounting lasers and spotlights in our camera enclosures



### LL

- Meets NEMA 4X standards
- Designed for food applications
- All 316 stainless steel constructions
- Drillable cord grip for premade cables
- Silicone gaskets

**Develop, Design and Manufacture.**  
*At APG, we make it easy for design engineers to get the enclosures they need for their particular application.*  
**Give us a call.**

### REGULATORY COMPLIANCE

Some of our products are specifically designed to meet or exceed regulatory compliance specifications, these specifications include Explosion Proof, NEMA 4X, IP66, IP50, IP53, IP69K and FDA regulations.

### WARRANTY AND RETURN POLICY

All Allison Park Group (APG) products have a 1-year warranty. If you have difficulty with a product, please call us at 412.487.8211 and obtain a Return Materials Authorization (RMA) number. Products returned are subject to a restocking fee of 15% per 60 days from original invoice (special order products are subject to this fee on receipt). Credit for custom enclosures returns will be handled on a per case basis. Please include a copy of the original invoice so we may credit your account. Our goal is complete customer satisfaction.