



945 East 11<sup>th</sup> Avenue Tampa, FL 33605

Phone: (813) 984-0125

Contact: Sales@ pyramidimaging.com

<https://pyramidimaging.com>

## Basler Accessories



### Technical Specification

## USB 3.0 CARD PCIe, FRESCO FL1100, 1 HC, x1, 4 PORTS

**Order Number**

**2200000069**

Document Number: DG001773

Version: 02 Language: 000 (English)

Release Date: 9 June 2017

## **Contacting Basler Support Worldwide**

### **Europe, Middle East, Africa**

Basler AG  
An der Strusbek 60–62  
22926 Ahrensburg  
Germany

Tel. +49 4102 463 515  
Fax +49 4102 463 599

[support.europe@baslerweb.com](mailto:support.europe@baslerweb.com)

### **The Americas**

Basler, Inc.  
855 Springdale Drive, Suite 203  
Exton, PA 19341  
USA

Tel. +1 610 280 0171  
Fax +1 610 280 7608

[support.usa@baslerweb.com](mailto:support.usa@baslerweb.com)

### **Asia-Pacific**

Basler Asia Pte. Ltd.  
35 Marsiling Industrial Estate Road 3  
#05–06  
Singapore 739257

Tel. +65 6367 1355  
Fax +65 6367 1255

[support.asia@baslerweb.com](mailto:support.asia@baslerweb.com)

[www.baslerweb.com](http://www.baslerweb.com)

**All material in this publication is subject to change without notice and is copyright Basler AG.**

Order Number	Description	Applicable Cameras
2200000069	4-port USB 3.0 Host Controller Card, A-type Receptacle	ace USB 3.0, dart USB 3.0, pulse

Table 1: Host Controller Card Type

## Key Features

With this USB 3.0 host controller card you can add USB 3.0 connectivity to your system, which will allow you to benefit from USB 3.0 features, or you can increase the number of existing USB 3.0 ports. Following is a list of the card's key features:

- PCIe x1 Gen2
- USB 3.0 SuperSpeed 5 Gbps per port
- FrescoLogic FL 1100 chipset
- Compliant with USB 3.0 Specification Revision 1.0




Basler recommends using Basler-qualified cables. These can be purchased via the Basler website: [www.baslerweb.com](http://www.baslerweb.com)

## Technical Specifications

Physical Dimensions	120 mm x 98 mm
Camera Power Supply	<ul style="list-style-type: none"> <li>■ Via PCIe 12 V (step-down)</li> <li>■ Via SATA 15-pin power connector (5 V)</li> <li>■ Via IDE 4-pin DC power connector</li> </ul> <p>Basler recommends supplying power to the <math>V_{bus}</math> via the PCIe slot. If you're using the SATA connector, an appropriate external power supply must be used.</p>
USB 3.0	<ul style="list-style-type: none"> <li>■ Compliant with USB 3.0 Specification Revision 1.0</li> <li>■ Supports 4 downstream ports (all speeds)</li> <li>■ Supported data transfer types: <ul style="list-style-type: none"> <li>■ Control</li> <li>■ Bulk</li> <li>■ Interrupt</li> <li>■ Isochronous</li> </ul> </li> <li>■ Backward compatible with high, full, and low speed</li> </ul>
PCIe	<ul style="list-style-type: none"> <li>■ Compliant with PCI Express Base Specification Revision 2.0</li> <li>■ Compliant with Intel's eXtensible Host Controller Interface (xHCI) Specification Revision 1.0</li> <li>■ Compliant with PCI Bus Power Management Interface Specification Revision 1.2</li> </ul>
Transfer Rates	<ul style="list-style-type: none"> <li>■ 1 Camera <ul style="list-style-type: none"> <li>■ Up to 380 MBps <b>per port</b> reliably supported</li> </ul> </li> <li>■ Multiple Cameras <ul style="list-style-type: none"> <li>■ Up to 380 MBps <b>total</b> bandwidth reliably supported, if cameras are operated at identical bandwidths</li> <li>■ With different transfer rates per camera, up to 220 MBps <b>total</b> bandwidth reliably supported</li> </ul> </li> </ul>
System Requirements	<ul style="list-style-type: none"> <li>■ Processor <ul style="list-style-type: none"> <li>■ Minimum: Intel Ivy Bridge or higher</li> <li>■ Applications with high transfer rates: Intel Haswell or higher</li> <li>■ Tested by Basler with Ivy Bridge, Haswell, and Skylake processor generations</li> </ul> </li> <li>■ Minimum 4 GB RAM</li> <li>■ Operating System <ul style="list-style-type: none"> <li>■ Windows 7</li> <li>■ Windows 10</li> </ul> </li> </ul>

Table 2: Technical Specifications

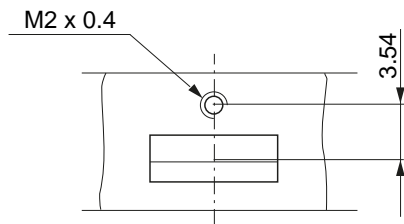
	For best performance, always keep drivers updated to the latest version.
---	--

### Environmental Specifications

Operating Temperature	5–60 °C
Operating Humidity	10–70 %, relative, non-condensing
Storage Temperature	5–70 °C
Storage Humidity	10–70 %, relative, non-condensing

Table 3: Environmental Specifications

### USB 3.0 Cable Lock Mechanism




Dimensions in mm

Fig. 1: Locking Screw Positions

### General Information

Conformity	CE, RoHS, FCC, VCCI
Warranty	1 year

Table 4: General Information

	This host controller card is suitable for low transfer rates (see <a href="#">page 2</a> ). If your application requires higher transfer rates, consider using the USB 3.0 Card PCIe, Fresco, 4 HC, x4, 4 Ports (order number 2000036233). This is available via the Basler website: <a href="http://www.baslerweb.com">www.baslerweb.com</a>
---	---

## Revision History

Doc. ID Number	Date	Changes
DG00177301000	13 Dec 2016	Initial release of this document.
DG00177302000	9 Jun 2017	Added environmental specifications in Table 3 on <a href="#">page 3</a> .



945 East 11<sup>th</sup> Avenue Tampa, FL 33605

Phone: (813) 984-0125

Contact: [Sales@ pyramidimaging.com](mailto:Sales@pyramidimaging.com)

<https://pyramidimaging.com>