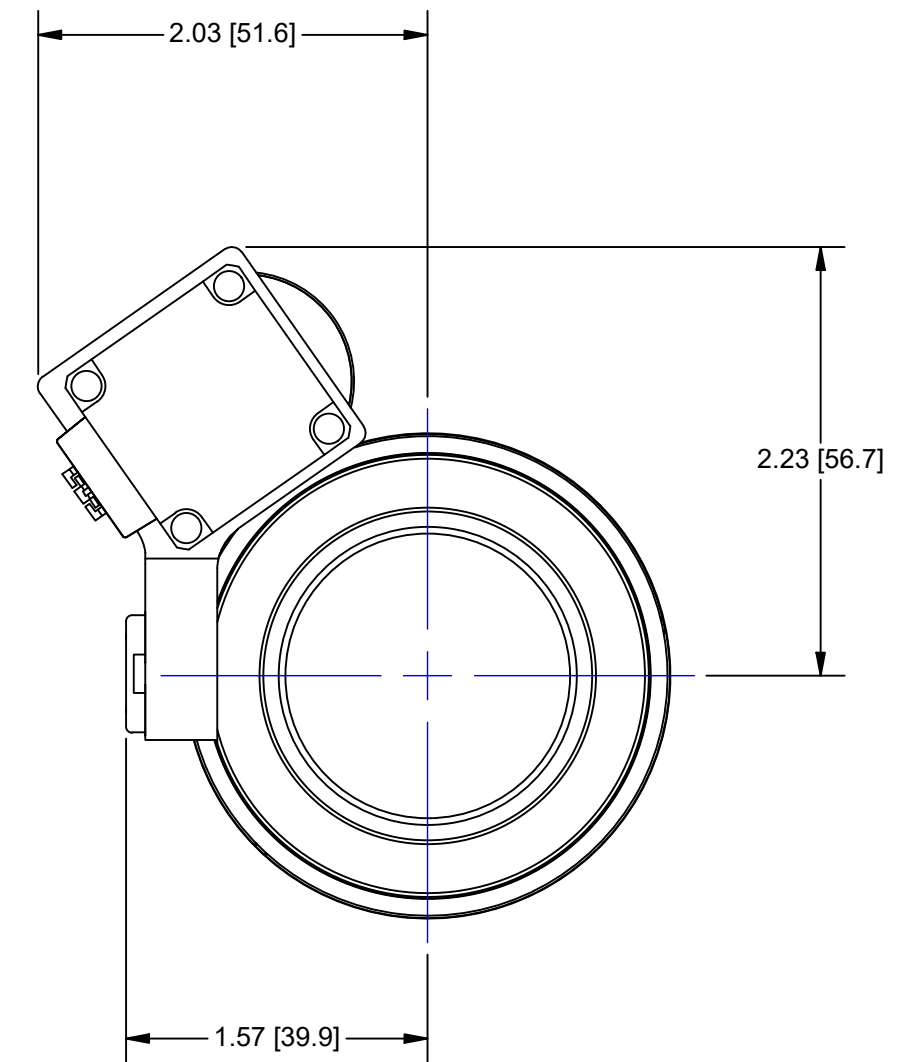
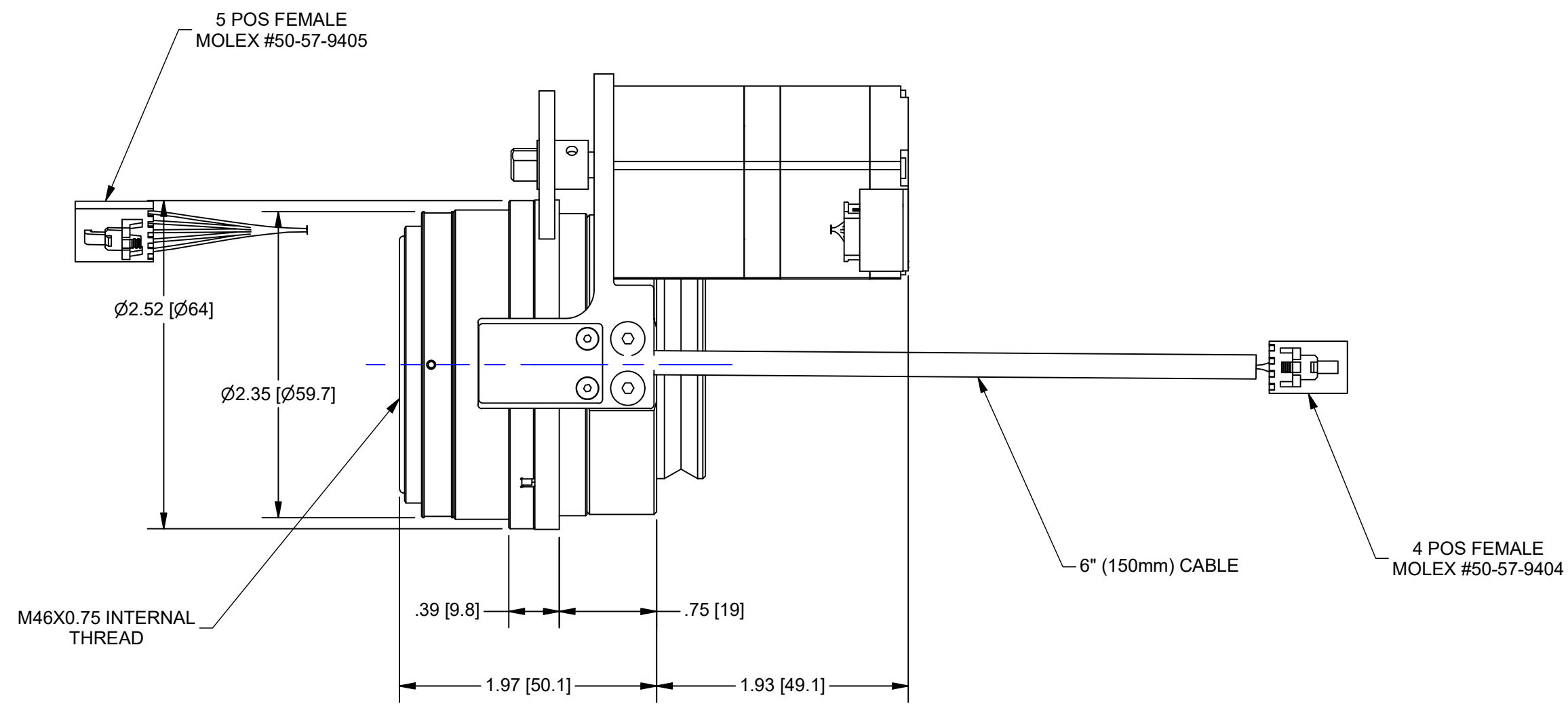


SCALE 1:1



WORKING DISTANCE = 173mm  
FINE FOCUS TRAVEL = 10mm  
(OK SHOWS EXTENDED POSITION)

**5φ MOTOR AND HALL EFFECT CABLE INFORMATION:**

- FOCUS / HE CABLE LENGTH = 0.15m
- USE NAVITAR #1-40170 (1.8m), 1-40289 (1.2m), 1-40290 (0.6m) TO CONNECT TO NAVITAR 5φ PHASE CONTROLLERS (1-40167, 1-40168, 1-40169.)

FF MOTOR  
5 POSITION FEMALE  
CONNECTOR  
(MOLEX #50-57-9405)

HE SENSOR  
4 POSITION FEMALE  
CONNECTOR  
(MOLEX #50-57-9404)

**5φ FF MOTOR PINOUT**  
PIN 1 = MOTOR 1 (BLUE)  
PIN 2 = MOTOR 2 (RED)  
PIN 3 = MOTOR 3 (ORANGE)  
PIN 4 = MOTOR 4 (GREEN)  
PIN 5 = MOTOR 5 (BLACK)

**4 PIN HE SENSOR PINOUT**  
PIN 1 = COMMON  
PIN 2 = FAR LIMIT  
PIN 3 = +5VDC  
PIN 4 = NEAR LIMIT



945 East 11<sup>th</sup> Avenue Tampa, FL 33605  
Phone: (813) 984-0125  
Contact: Sales@pyramidimaging.com  
<https://pyramidimaging.com>

OUTLINE

UNLESS OTHERWISE SPECIFIED DIMENSIONS ARE IN INCHES (MM) AND INCLUDE CHEMICALLY APPLIED OR PLATED FINISHES	PROPRIETARY AND CONFIDENTIAL			
	THE INFORMATION CONTAINED IN THIS DRAWING IS THE SOLE PROPERTY OF NAVITAR. ANY REPRODUCTION IN PART OR AS A WHOLE WITHOUT THE WRITTEN PERMISSION OF NAVITAR IS PROHIBITED.			
SCALE: 2:1	0.0 inch 1.0	MTR FF, 5φ, 0.5X LENS ATTACHMENT		
WEIGHT: 0.83 lbmass	0.0 mm 25.0			
DR BY: J. WILLIAMSON	DO NOT SCALE DRAWING	SIZE C	PART NUMBER 1-81202M5	REV A
CH BY: PB				
PROJECT #: E3576				
DATE DR: 11/29/2017				