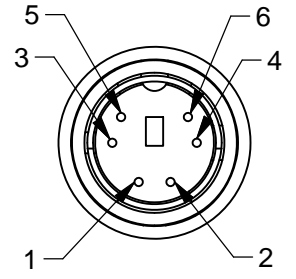
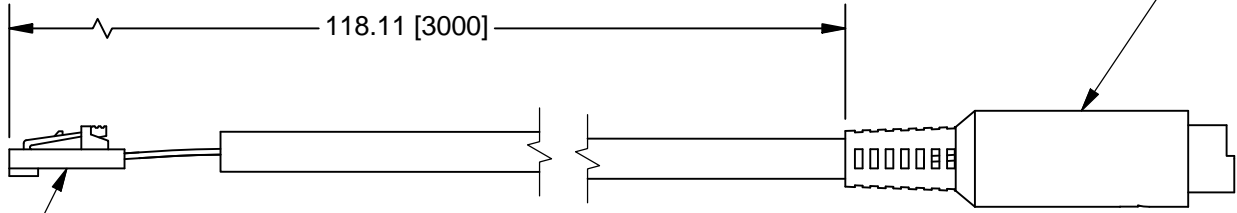


Tampa, FL
 Phone: (813) 984-0125
 Contact: Sales@pyramidimaging.com
<https://pyramidimaging.com>

6 PIN MIN-DIN- MALE
 CABLES TO GO
 PN:01747
 PIN 1= ANNODE
 PIN 2 = CATHODE
 PIN 3 TIED TO PIN 5
 PIN 4 TIED TO PIN 6



MOLEX
 FEMALE CONNECTOR HOUSING
 2 POSITION
 PN: 50-57-9402

CRIMPS
 2x MOLEX: 16-02-0097

OUTLINE

| | | | | | | |
|--|------------|--|--|----------------|--------------|----------|
| UNLESS OTHERWISE SPECIFIED DIMENSIONS ARE IN INCHES [MM] AND INCLUDE CHEMICALLY APPLIED OR PLATED FINISHES | | PROPRIETARY AND CONFIDENTIAL | | | | |
| SCALE: 1:1 | | THE INFORMATION CONTAINED IN THIS DRAWING IS THE SOLE PROPERTY OF NAVITAR. ANY REPRODUCTION IN PART OR AS A WHOLE WITHOUT THE WRITTEN PERMISSION OF NAVITAR IS PROHIBITED. | | | | |
| WEIGHT: | 8.12 g | | | CABLE, LED, 3m | | |
| DR BY: | C Boggio | | | | | |
| CH BY: | R. PODLENA | | | | | |
| PROJECT #: | E3119 | DO NOT SCALE DRAWING | | SIZE | 1-40184 | |
| DATE DR: | 7/29/2013 | | | A | | |
| | | | | | SHEET 3 OF 3 | REV A |