



ZEISS Planar T* 1.4/85



Features

- Fast f/1.4 aperture
- Precise manual focusing
- Robust full-metal construction
- Fixation for focus and aperture
- Identical color reproduction of all models
- For industrial cameras with F-Mount up to sensor sizes of 24x36 mm or 43mm line sensors.

ZF-I: Industrial Edition

Features special screws to fix focus and aperture settings even in rough situations.

ZF-IR: Infrared Edition

Features special coating for optimized performance in near-infrared applications.

Camera Mounts

Available with ZF.2, EF and M42 mount.



Technical drawing of the Nikon 70-200mm f/2.8 ED VR lens, showing front and rear views with dimensions and focal length markings.

Dimensions:

- Front View:
 - Top diameter: $\varnothing 77.2$
 - Barrel diameter: $\varnothing 70.5$
 - Mount diameter: $\varnothing 69$
 - Mount diameter: $\varnothing 69$
 - Mount diameter: $\varnothing 64.4$
- Rear View:
 - Mount diameter: $\varnothing 64.4$
- Overall length: 62.1
- Mount diameter: 46.5

Focal Length Markings (Front View):

- 50, 25, 15, 8
- 15, 7, 4, 1

Focal Length Markings (Rear View):

- 16, 11, 8, 5.6, 4, 2.8, 2, 1.4
- 16, 11, 8, 5.6, 4, 2.8, 2, 1.4

Other Markings:

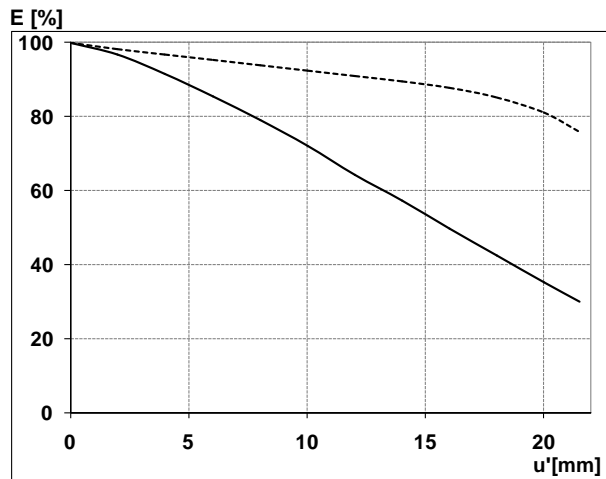
- Top: M72 P=0.75
- Bottom: 16, 11, 8, 5.6, 4, 2.8, 2, 1.4

* referring to 35 mm format



ZEISS Planar T* 1.4/85

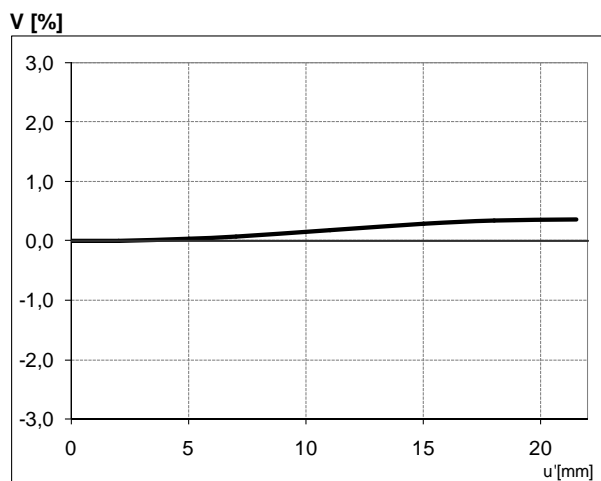
Relative Illuminance*



The relative illuminance shows the decrease in image brightness from the image center to the edge in percent.

— f-number 1.4
... f-number 2.8

Relative Distortion*



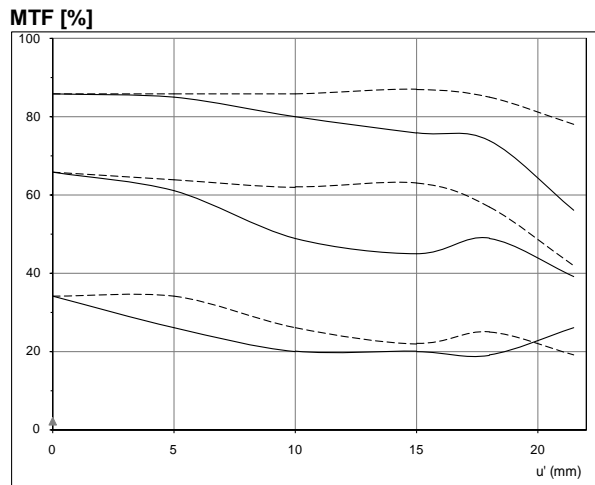
The relative distortion shows the deviation of the actual image height from the ideal one in percent.

**Data for infinite focus setting*



ZEISS Planar T* 1.4/85

MTF Charts*

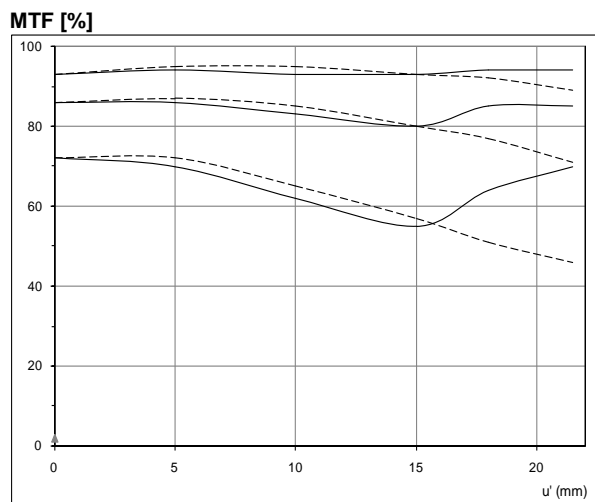


The Modulation Transfer (MTF) as a function of image height (u) and slit orientation (sagittal, tangential) has been measured with white light at spatial frequencies of $R = 10, 20$ and 40 cycles/mm. The MTF charts are valid for the ZF, ZF-I version and for white light.

f-number 1.4

— Sagittal

... Tangential



f-number 5.6

— Sagittal

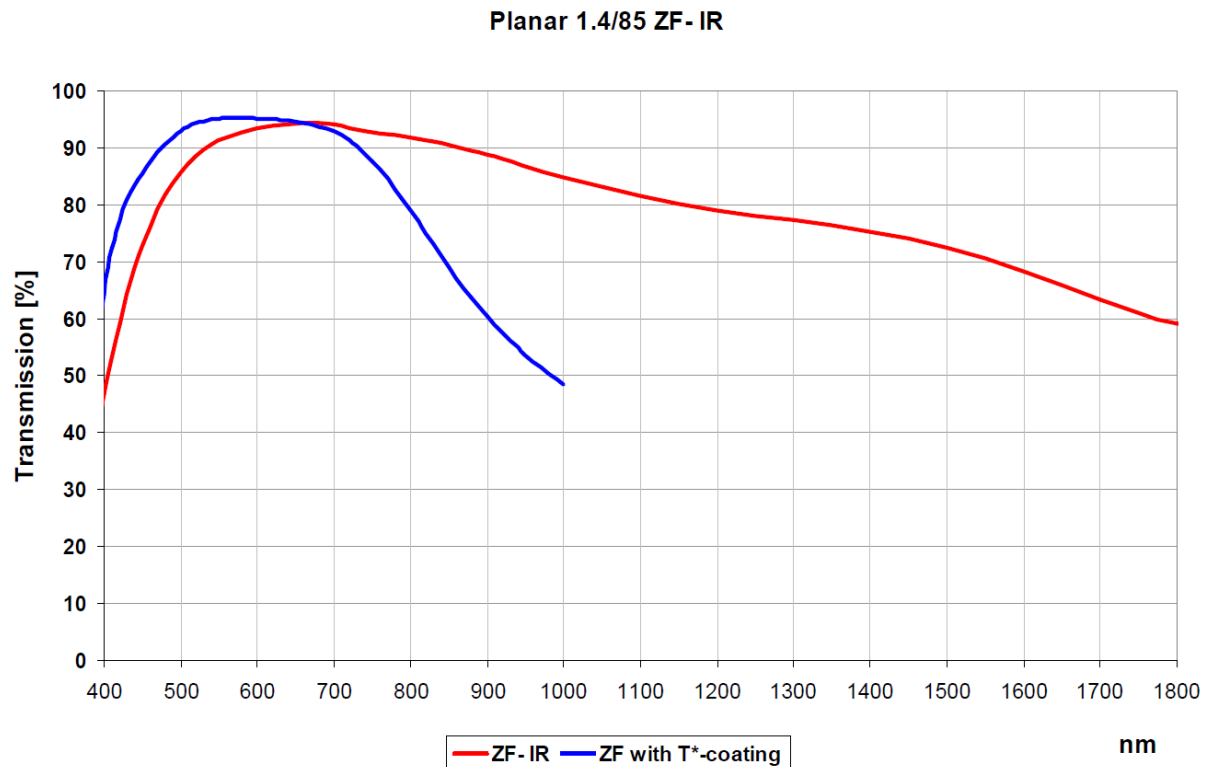
... Tangential

**Data for infinite focus setting / Not for IR version*



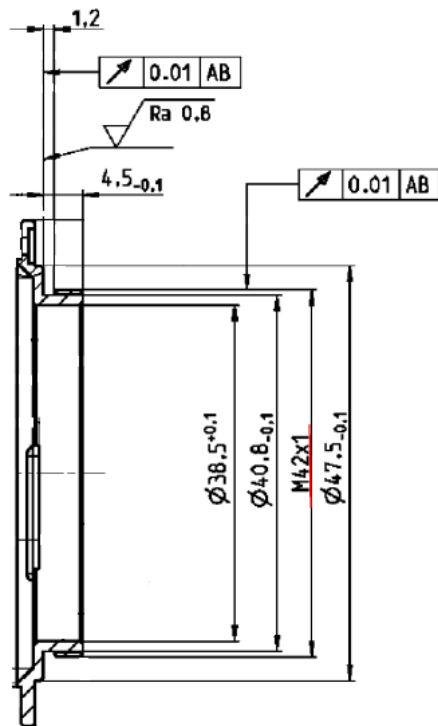
ZEISS Planar T* 1.4/85

Spectral Transmission ZF vs. ZF-IR





ZEISS Planar T* 1.4/85



M42 Mount for 45,5 mm Flange Focal Distance

The diameter of the camera/lens adapter must not exceed 55 mm at the lens side!