



# ZEISS Interlock Compact 2.4/85



## Features

- Very compact but suitable to large image format
- For industrial cameras up to sensor sizes of 24x36 mm or 41mm line sensors
- Precise manual focusing
- Robust full-metal construction
- Features special screws to fix focus and aperture settings even in rough situations
- Due to light weight resistant against vibrations and shocks
- High contrast over the entire image field

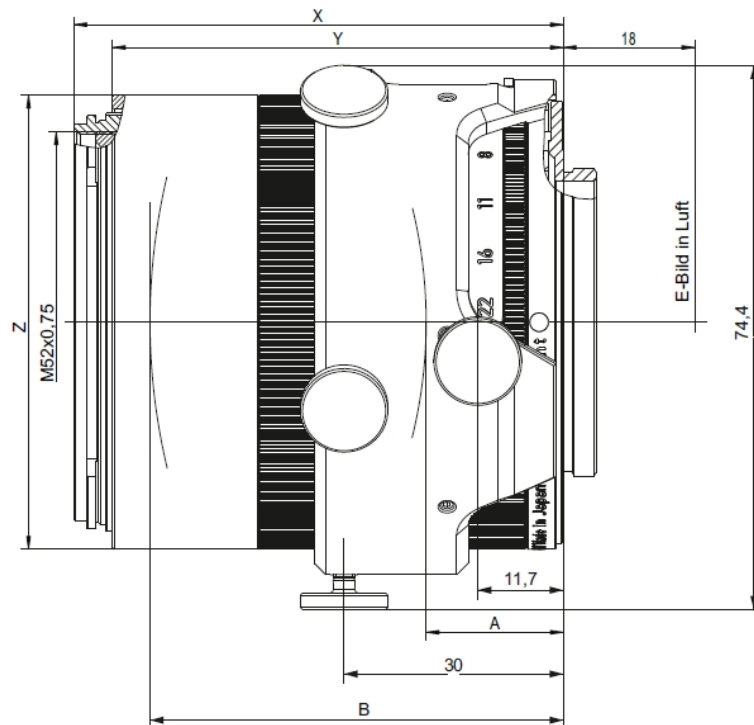
## Camera Mount

M42x1 screw mount  
(18 mm FFD)



# ZEISS Interlock Compact 2.4/85

## Technical Specifications



X	Y	Z	A	B
89.77 mm (inf.)	84.5 mm	Ø = 62.5 mm	9.65 mm (inf.)	82.15 mm (inf.)

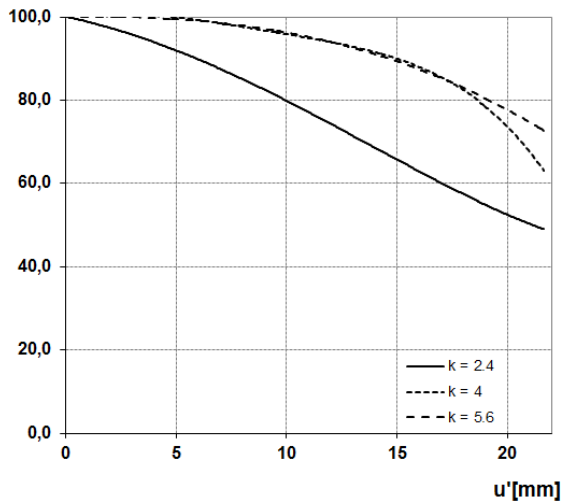
Focal length	85 mm
Aperture range	f/2.4 – f/22
Number of elements / groups	7 / 7
Min. working distance (object to sensor)	800 mm (2.62 ft.) – ∞
Min. free working distance	685 mm (2.25 ft.) – ∞
Angular field* (diag. / horiz. / vert.)	28.6 / 24.1 / 16.2°
Max. diameter of image field	43.0 mm (1.7")
Flange focal length	18.0 mm
Coverage at close range	258 x 172 mm (10.1 x 6.8"), line 296 mm (11.6")
Image ratio at close range	1:7.2
Filter-thread	M 52 x 0.75
Weight	648 g (1.43 lbs.)
Camera mount	M42 (18.0 mm FFD)

\* referring to 24 x 36 mm format resp. 43 mm line



# ZEISS Interlock Compact 2.4/85

## Relative Illuminance\*

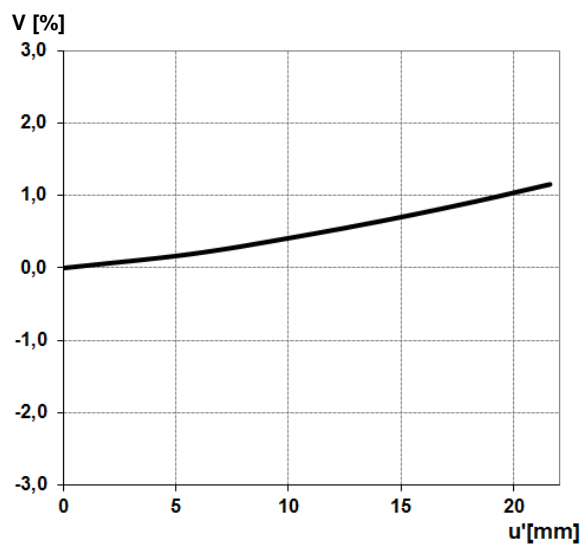


E [%]

The relative illuminance shows the image brightness over the image height  $u'$  in relation to the image center.

- f-number = 2.4
- - f-number = 4
- · - f-number = 5.6

## Relative Distortion\*



V [%]

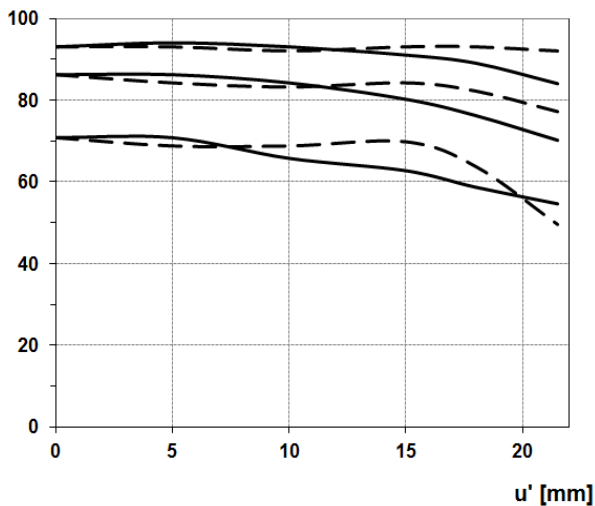
The relative distortion shows the deviation of the image height from the expected image height  $u'$  in percent.

*\*Data for infinite focus setting*



# ZEISS Interlock Compact 2.4/85

## MTF Charts\*



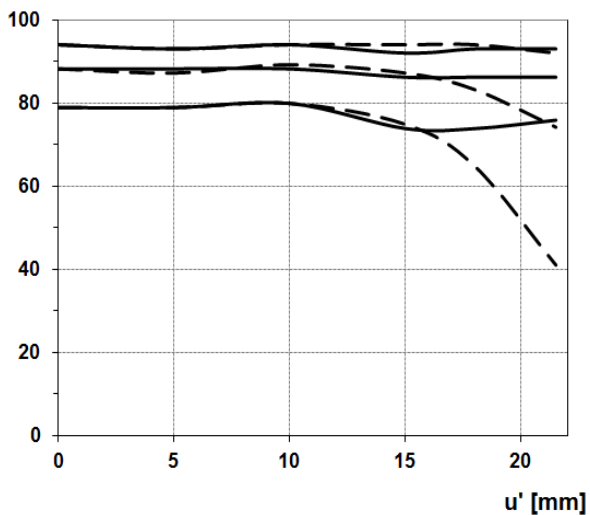
Contrast [%]

The Modulation Transfer (MTF) as a function of image height ( $u$ ) and slit orientation (sagittal, tangential) has been measured with white light at spatial frequencies of  $R = 10, 20$  and  $40$  cycles/mm.

F-Number 2.4

— Sagittal

... Tangential



Contrast [%]

F-Number 5.6

— Sagittal

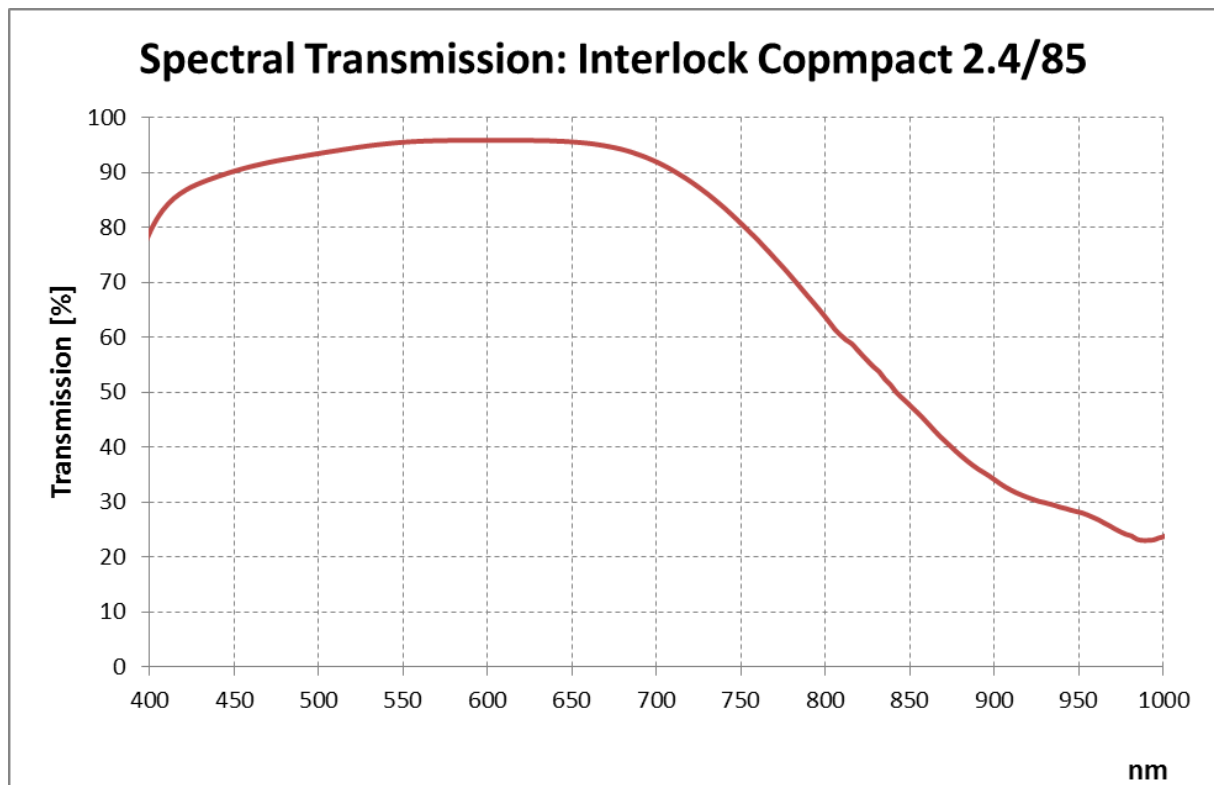
... Tangential

\*Data for infinite focus setting



# ZEISS Interlock Compact 2.4/85

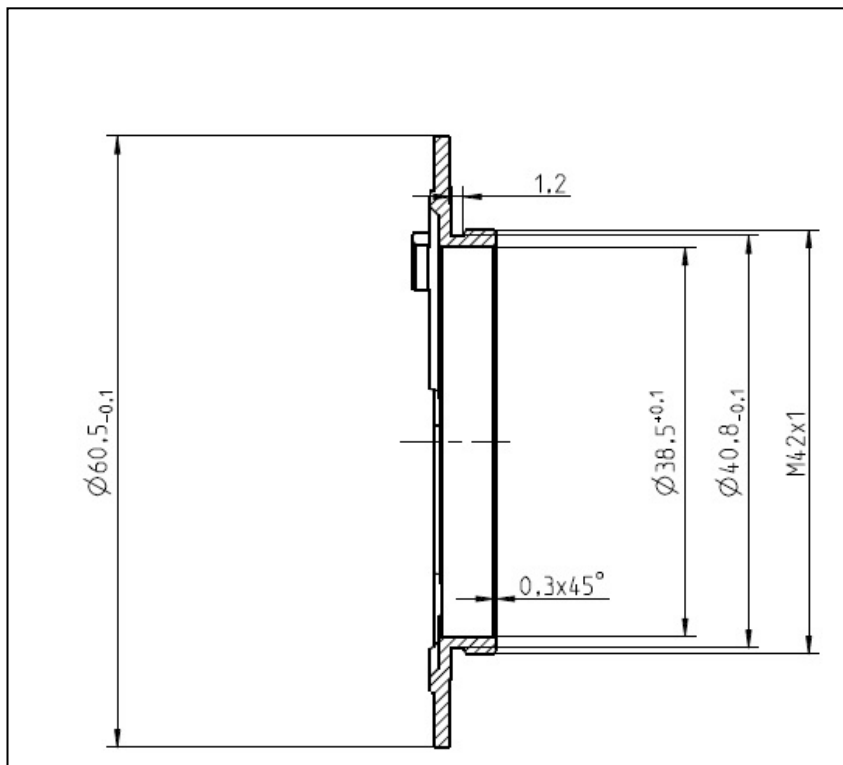
## Spectral Transmission





# ZEISS Interlock Compact 2.4/85

Sketch of the M42x1 Interface (FFD 18.0 mm)



The diameter of the camera/lens adapter must not exceed 60 mm at the interface to the lens!