

1 2 3 4 5 6

A

B

C

D

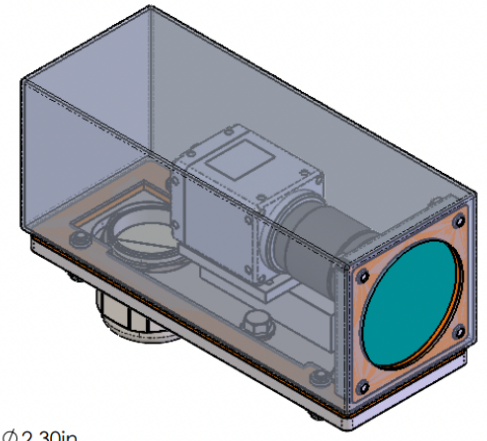
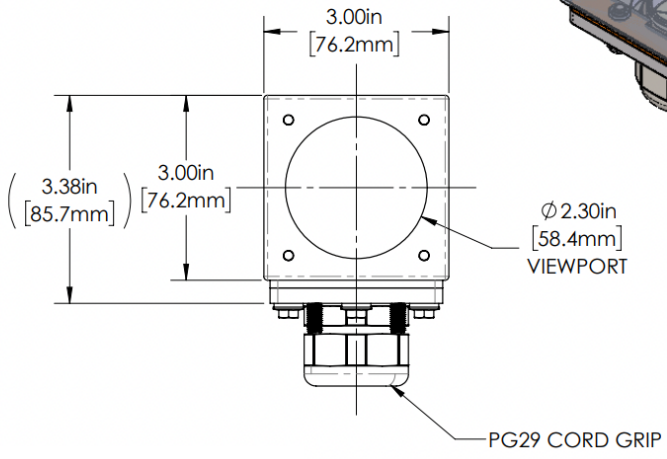
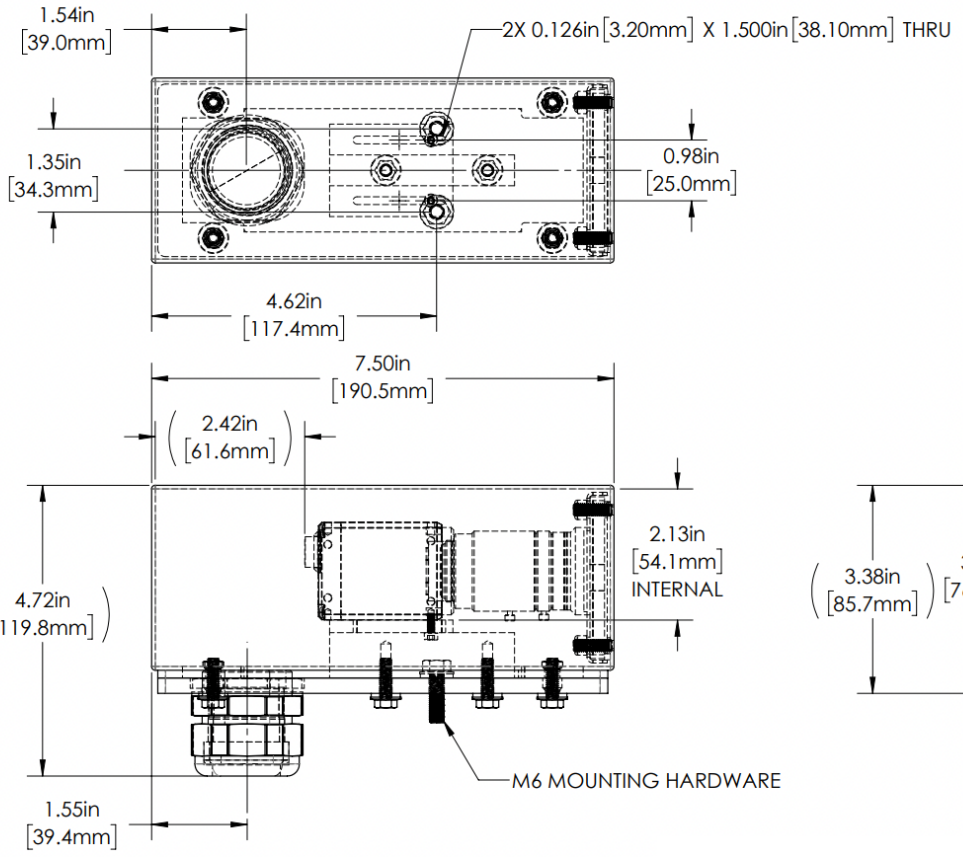
A

B

C

D

REVISIONS				
ZONE	REV.	DESCRIPTION	DATE	APPROVED
	A	RELEASED FOR PRODUCTION	1/6/2022	DMM



30S SERIES PROPERTIES TABLE

ENVIRONMENT RATING	IP68*	
	(*RATING MAY CHANGE IF INSTALLER MILLS CABLE GLAND OUTSIDE OF TOLERANCE)	
COMPONENT	MATERIAL	FINISH
BODY/BASE	316 SS	BURNISHED
VIEWPORT	CLEAR FLOWCOAT ACRYLIC	ABR2
GASKET	SILICONE	NONE
ARM/ADAPTOR	6061 ALUMINIUM	NONE
HARDWARE	316 SS - EXTERNAL, 18-8 SS - INTERNAL	NONE



MACHINING		SHEET METAL	
X.X	0.0250"	HOLE TO HOLE (SAME SURFACE)	X.X
X.XX	0.0100"		X.X
X.XXX	0.0050"		X.XX
X.XXXX	0.0005"		X.XXX
ANGULAR	0.5°	HOLE TO FOLDED EDGE	X.XXX
DEBURR ALL			X.X
		FOLD TO FOLD	X.X
			X.XX
			X.XXX
			X.XXX
			X.XXX
			X.XXX

APG Vision LLC 4055 Alpha Drive Allison Park, PA 15101 USA Phone +1 (412) 487-8211 apgvision.com			
apgvision			
DESCRIPTION: 30S 7.5IN BODY, ACRYLIC VIEWPORT, 25mm SLOTTED ARM & PG29 CORD GRIP			
MATERIAL: SEE BOM			
FINISH: SEE BOM			
DRAWN BY: DMM	DATE: 1/6/2022	SCALE: 1:2	SHT-SIZE: B
CHECKED BY: DMM		DATE: 1/6/2022	APPROX. WEIGHT (LBS): 3.7551
		PART NUMBER: 30S-JA	REVISION: A
Sheet 1 of 1			

1 2 3 4 5 6