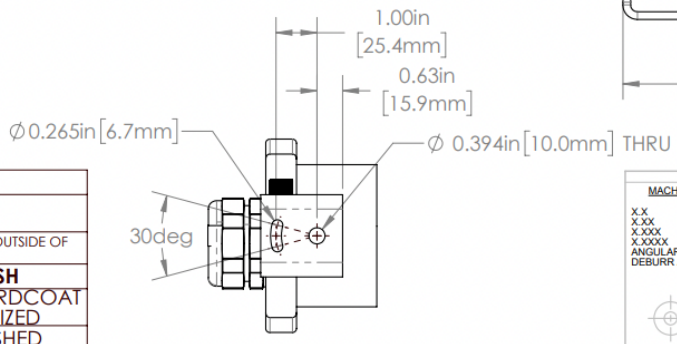
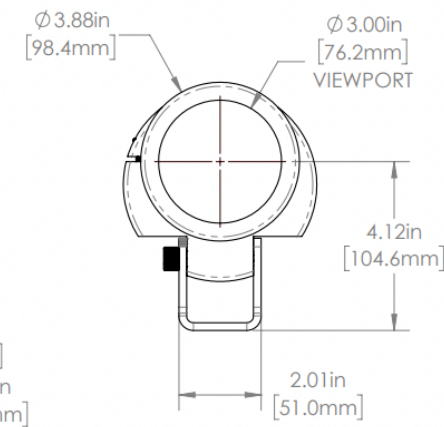
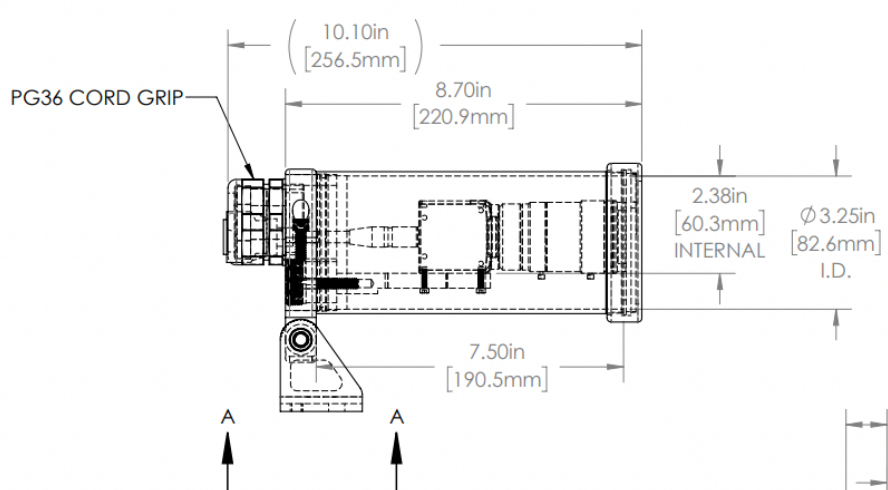
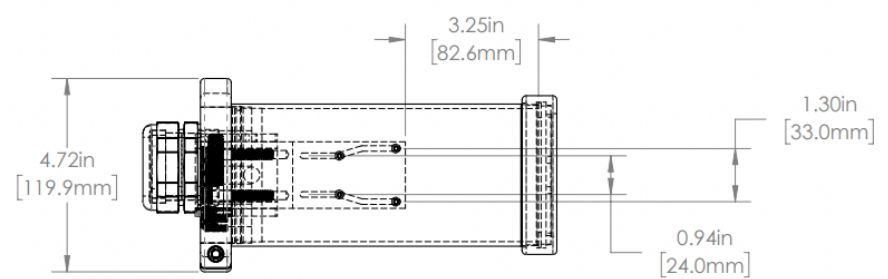


| REVISIONS |      |                         |          |          |
|-----------|------|-------------------------|----------|----------|
| ZONE      | REV. | DESCRIPTION             | DATE     | APPROVED |
|           | A    | RELEASED FOR PRODUCTION | 3/2/2022 | DMM      |



**35C SERIES PROPERTIES TABLE**

|                           |  |                         |
|---------------------------|--|-------------------------|
| <b>ENVIRONMENT RATING</b> | IP68*  |                         |
|                           | (*RATING MAY CHANGE IF INSTALLER MILLS CABLE GLAND OUTSIDE OF TOLERANCE) |                         |
| <b>COMPONENT</b>          | <b>MATERIAL</b>  | <b>FINISH</b>           |
| BODY/BASE/BARREL          | 6061 ALUMINUM  | CLEAR HARDCOAT ANODIZED |
| FOOT                      | 304 SS   | BURNISHED               |
| VIEWPORT                  | CLEAR FLOWCOAT ACRYLIC   | ABR2                    |
| GASKET                    | VITON  | NONE                    |
| ARM/ADAPTOR               | 6061 ALUMINUM  | NONE                    |
| HARDWARE                  | 18-8 SS  | NONE                    |

| MACHINING  |         | SHEET METAL                 |              |
|------------|---------|-----------------------------|--------------|
| X.X        | 0.0250" | HOLE TO HOLE (SAME SURFACE) | X.X          |
| X.XX       | 0.0100" |                             | X.XX         |
| X.XXX      | 0.0050" |                             | X.XXX        |
| X.XXXX     | 0.0005" |                             | X.XXXX       |
| ANGULAR    | 0.5°    | HOLE TO EDGE                | X.X          |
| DEBURR ALL |         |                             | X.XX         |
|            |         |                             | X.XXX        |
|            |         |                             | X.XXXX       |
|            |         |                             | EDGE TO EDGE |
|            |         |                             | X.X          |
|            |         |                             | X.XX         |
|            |         |                             | X.XXX        |
|            |         |                             | X.XXXX       |
|            |         |                             | ANGULAR 1.0° |

APG Vision LLC  
4055 Alpha Drive  
Allison Park, PA 15101 USA  
Phone +1 (412) 487-8211  
apgvision.com

**apgvision**

DESCRIPTION:  
**35C 7.5IN BARREL, SEALED, 33mm & 24mm O.C. ARM**

MATERIAL:  
**SEE BOM**

FINISH:  
**SEE BOM**

|                    |                   |                        |                |                                 |
|--------------------|-------------------|------------------------|----------------|---------------------------------|
| DRAWN BY:<br>DMM   | DATE:<br>3/2/2022 | SCALE:<br>1:3          | SHT-SIZE:<br>B | APPROX. WEIGHT (LBS):<br>3.8726 |
| CHECKED BY:<br>DMM | DATE:<br>3/2/2022 | PART NUMBER:<br>35C-MG | REVISION:<br>A |                                 |

Sheet of 1

THIS PRINT IS THE PROPERTY OF APG VISION LLC. THE INFORMATION CONTAINED HEREIN IS CONFIDENTIAL. IT IS NOT TO BE REPRODUCED, REPRODUCED OR USED IN ANY PROCESS OF MANUFACTURING WITHOUT WRITTEN PERMISSION FROM THE OWNER AND IS RETURNABLE UPON DEMAND. ANY INFRINGEMENT UPON THE PATENT RIGHTS SHOWN HEREIN, WHETHER IN PART OR WHOLE, WILL BE PROSECUTED.

AS PART OF OUR POLICY OF CONTINUING DEVELOPMENT, APG VISION LLC RESERVES THE RIGHT TO ALTER SPECIFICATIONS WITHOUT PRIOR NOTICE.