

REVISIONS				
ZONE	REV.	DESCRIPTION	DATE	APPROVED
	A	RELEASED FOR PRODUCTION	11/2/2021	DMM

42S SERIES PROPERTIES TABLE		
ENVIRONMENT RATING	IP68*	
	[*RATING MAY CHANGE IF INSTALLER MILLS CABLE GLAND OUTSIDE OF TOLERANCE]	
COMPONENT	MATERIAL	FINISH
BODY/BASE	316 SS	BURNISHED
VIEWPORT	SODA LIME GLASS	NONE
GASKET	VITON	NONE
ARM/ADAPTOR	6061 ALUM	NONE
HARDWARE	316 SS - EXTERNAL, 18-8 SS - INTERNAL	NONE

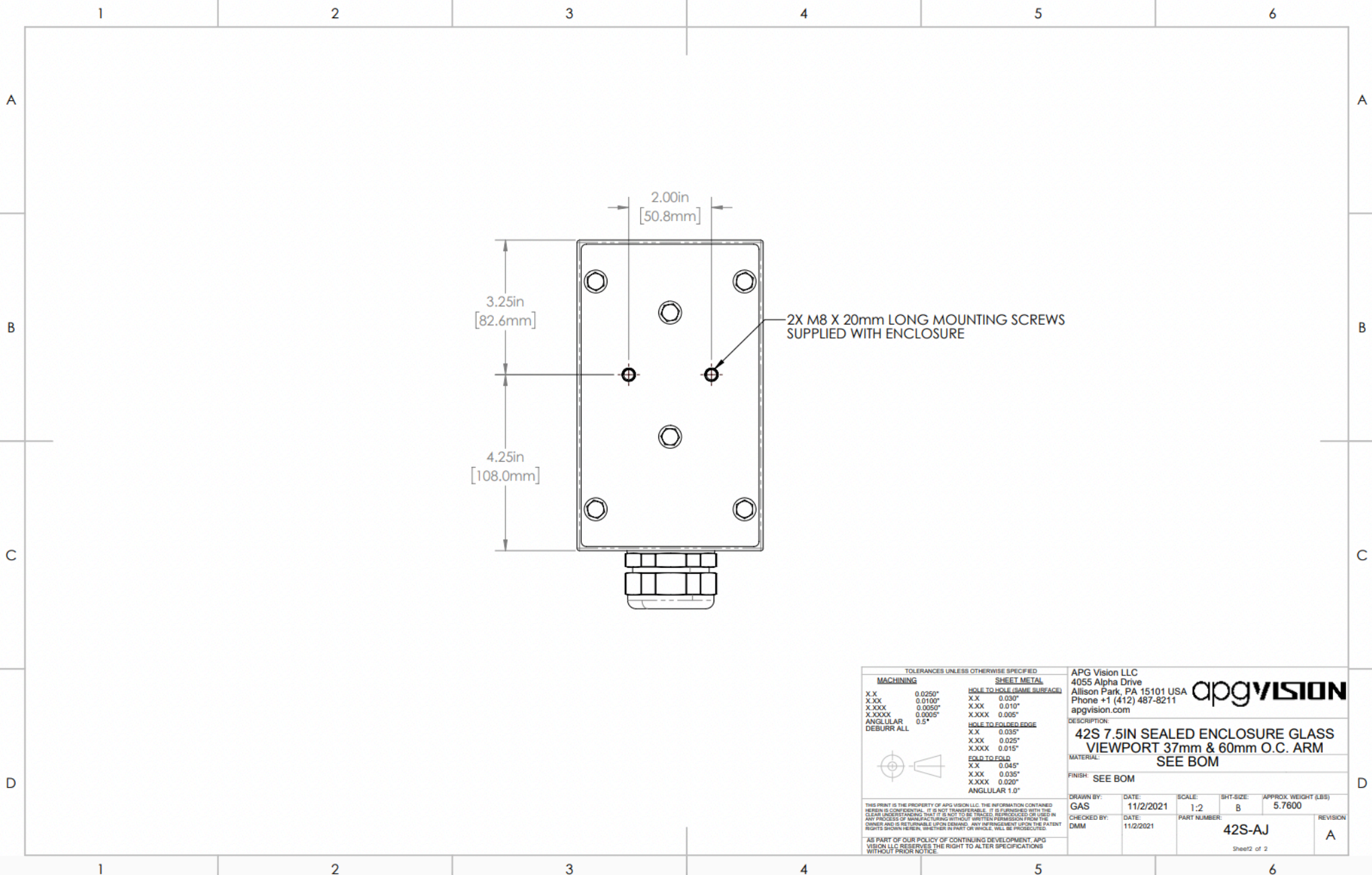


TOLERANCES UNLESS OTHERWISE SPECIFIED		SHEET METAL	
MACHINING		HOLE TO HOLE (SAME SURFACE)	
XX	0.0250"	XX	0.030"
X.XX	0.0100"	XX	0.010"
X.XXX	0.0050"	XX	0.005"
X.XXXX	0.0005"	XX	0.0005"
ANGULAR	0.5°	HOLE TO FOLDED EDGE	
DIEBURR	ALL	XX	0.035°
		X.XX	0.025°
		X.XXX	0.015°
		FOLD TO FOLD	
		XX	0.045°
		X.XX	0.035°
		X.XXX	0.020°
		ANGULAR	1.0°

APG Vision LLC 4055 Alpha Drive Allison Park, PA 15101 USA Phone +1 (412) 487-8211 apgvision.com		apgvision	
DESCRIPTION: 42S 7.5IN SEALED ENCLOSURE GLASS VIEWPORT 37mm & 60mm O.C. ARM MATERIAL: SEE BOM			
FINISH:	SEE BOM		
DRAWN BY:	DATE:	SCALE:	SHT-SIZE: APPROX. WEIGHT (LBS)
GAS	11/2/2021	1:3	B 5.7600
CHECKED BY:	DATE:	PART NUMBER:	REVISION
DMM	11/2/2021	42S-AJ	A
Sheet 1 of 2			

THIS PRINT IS THE PROPERTY OF APG VISION LLC. THE INFORMATION CONTAINED HEREIN IS CONFIDENTIAL AND IS NOT TO BE REPRODUCED, COPIED, OR USED IN ANY PROCESS OF MANUFACTURING WITHOUT WRITTEN PERMISSION FROM THE OWNER AND IS RETURNABLE UPON DEMAND. ANY INFRINGEMENT OF THE PATENT RIGHTS SHOWN HEREIN, WHETHER IN PART OR WHOLE, WILL BE PROSECUTED.

AS PART OF OUR POLICY OF CONTINUING DEVELOPMENT, APG VISION LLC RESERVES THE RIGHT TO ALTER SPECIFICATIONS WITHOUT PRIOR NOTICE.



TOLERANCES UNLESS OTHERWISE SPECIFIED

MACHINING		SHEET METAL		
X.X	0.0250"	SOLE TO SAME (SAME SURFACE)	X.X	0.005"
X.XX	0.0100"		X.XX	0.010"
X.XXX	0.0050"		X.XXX	0.005"
X.XXXX	0.0005"		X.XXXX	0.0005"
ANGULAR	0.5°	SOLE TO FOLDED EDGE	X.X	0.035"
DEBURR ALL			X.XX	0.025"
			X.XXX	0.015"
		FOLD TO FOLD	X.X	0.045"
			X.XX	0.035"
			X.XXX	0.020"
		ANGULAR		1.0°

APG Vision LLC
 4055 Alpha Drive
 Allison Park, PA 15101 USA
 Phone +1 (412) 487-8211
 apgvision.com

apgVISION

DESCRIPTION:
42S 7.5IN SEALED ENCLOSURE GLASS VIEWPORT 37mm & 60mm O.C. ARM

MATERIAL:
SEE BOM

FINISH: **SEE BOM**

THIS PRINT IS THE PROPERTY OF APG VISION LLC. THE INFORMATION CONTAINED HEREIN IS CONFIDENTIAL. IT IS NOT TRANSFERABLE. IT IS FURNISHED WITH THE CLEAR UNDERSTANDING THAT IT IS NOT TO BE REPRODUCED OR USED IN ANY PROCESS OF MANUFACTURING WITHOUT WRITTEN PERMISSION FROM THE OWNER AND IS RETURNABLE UPON DEMAND. ANY INFRINGEMENT UPON THE PATENT RIGHTS SHOWN HEREIN, WHETHER IN PART OR WHOLE, WILL BE PROSECUTED.	DRAWN BY: GAS	DATE: 11/2/2021	SCALE: 1:2	SHT-SIZE: B	APPROX. WEIGHT (LBS): 5.7600
AS PART OF OUR POLICY OF CONTINUING DEVELOPMENT, APG VISION LLC RESERVES THE RIGHT TO ALTER SPECIFICATIONS WITHOUT PRIOR NOTICE.	CHECKED BY: DMM	DATE: 11/2/2021	PART NUMBER: 42S-AJ	REVISION: A	