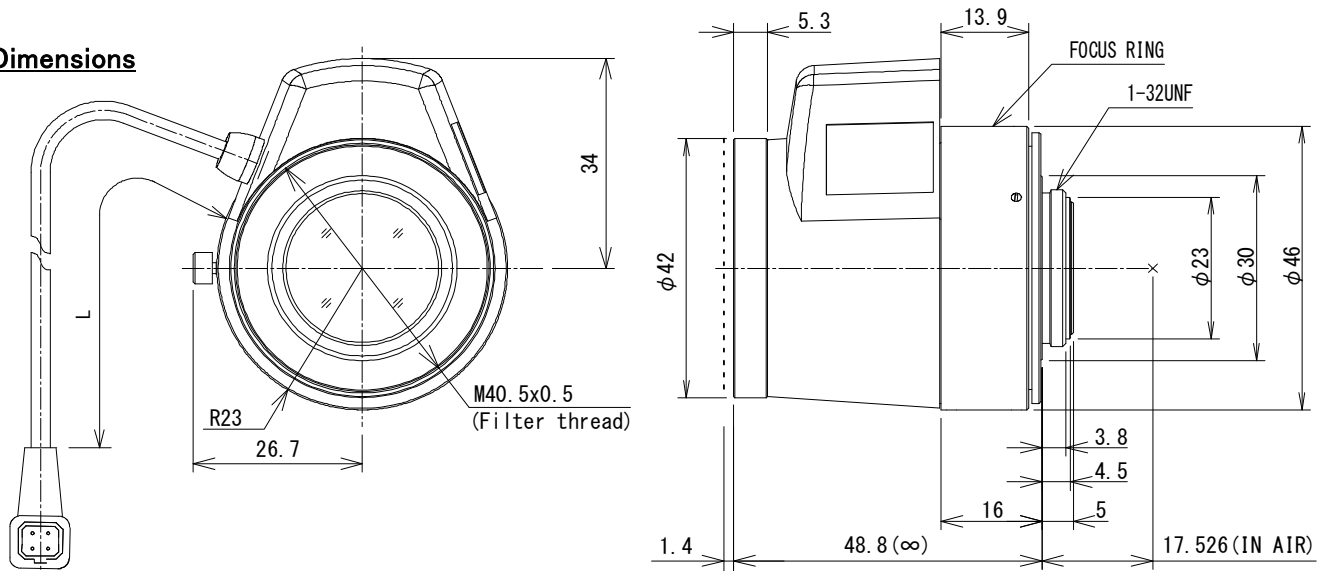


VG3518KC-MPYIR

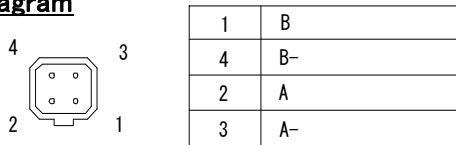
f=35mm F1.8 Day & Night
for 1.1 type 12Megapixel Cameras, Fixed-focal, Stepping Motor Iris
C-Mount

Model No.	VG3518KC-MPYIR		Effective	Front	φ 23.9mm		
Focal Length	35mm		Lens Aperture	Rear	φ 17.8mm		
Max. Aperture Ratio	1:1.8		Back Focal Length		14.2mm		
Max. Image Format	14.2mm x 10.4mm(φ 17.6mm)		Flange Back Length		17.526mm		
Operation Range	Iris	F1.8 - F16C		Mount	C-Mount		
	Focus	2m - Inf.		Filter Size	M40.5 P=0.5		
	Zoom	-		Dimensions	φ 42mm × 57mm × 48.8mm		
Control	Iris	Stepping Motor		Weight	123.1g		
	Focus	Manual					
	Zoom	-					
Angle of View	D	1.1 type	27.4°	1 type	25.1°	2/3 type	17.4°
	H		22.3°		20.2°		14.0°
	V		16.5°		15.2°		10.5°
Operating Temperature	-10°C - +50°C						

Dimensions



Wiring Diagram



945 East 11th Avenue Tampa, FL 33605

Phone: (813) 984-0125

Contact: Sales@pyramidimaging.com

<https://pyramidimaging.com>