

HEX Series

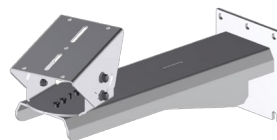
Explosion-Proof Housing

Specifications

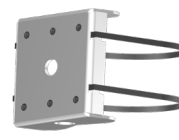
UL/cUL Classification	Class I, Div 1, Groups C,D. Class II, Div 1, Groups E,F,G.		
ATEX/IECEX Certification (pending)	Ex db IIB Gb, Ex tb IIIC Db		
Safety Standards	UL 1203, Explosion-Proof and Dust-Ignition-Proof Electrical Equipment for Use in Hazardous (Classified) Locations		
	UL 2062, Enclosures For Use In Hazardous (Classified) Locations		
	CSA C22.2 No. 25-17, Enclosures for use in Class II Groups E, F, and G Hazardous Locations		
	CSA C33.3 No. 30, Explosion-Proof Equipment		
Environmental	IP66 / NEMA 4X for all weather conditions		
Cable Entry	2 x ½" NPT threaded holes		
Window Construction	Tempered Borosilicate glass		
Housing Construction	Aluminum with stainless steel fasteners		
Finish	Powder coat paint		
Models	HEX-40140	HEX-50175	HEX-66205
Dimensions W x H x L	6.0" x 6.2" x 14.3" 152 x 157.5 x 362mm	8.0" x 8.2" x 18.3" 203 x 208 x 465mm	10" x 10.5" x 21.3" 254 x 267 x 541mm
Internal Dimensions	12" L x ø 3.5" 304.8 L x ø 89mm	15" L x ø 4.5" 381 x ø 114mm	18" L x ø 6.0" 457 x ø 152mm
Window Area	ø 2.2" (ø 57mm)	ø 2.7" (ø 69mm)	ø 3.3" (ø 81mm)
Window Thickness	0.5" (13mm)	0.5" (13mm)	0.5" (13mm)
Weight	9.8 lbs (4.4 kg)	20 lbs (9.1 kg)	36.6 lbs (16.6 kg)
Operating Temp	-4 ~ +122°F (-20 ~ +50°C)		

Specifications are subject to change without notice.

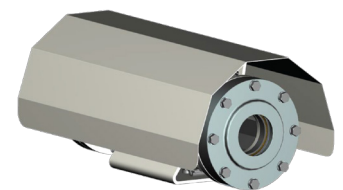
Accessories



Wall Mount
HEX-WMT



Pole Mount
HEX-PM



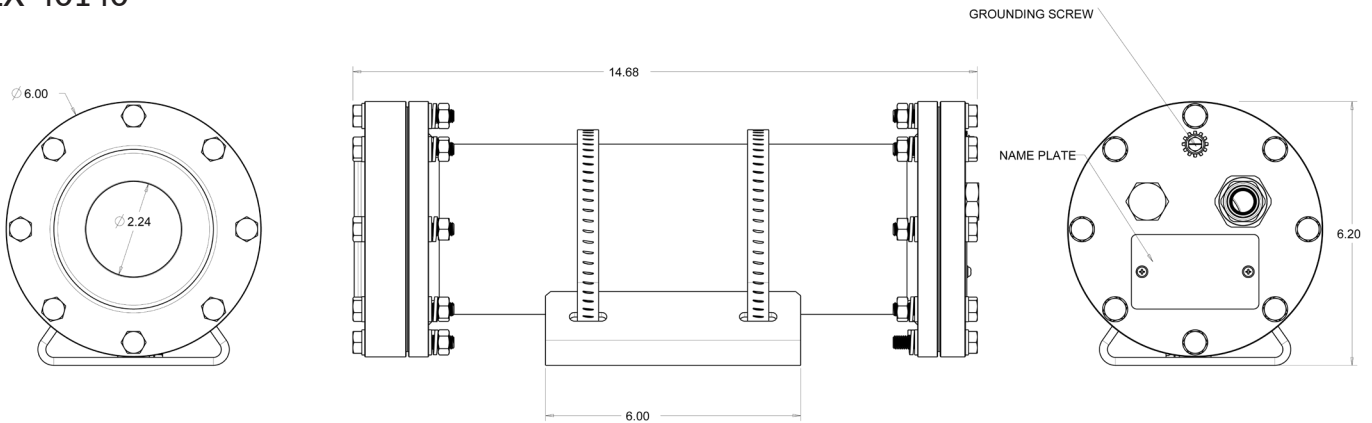
Sun Shield
HEX-SS

HEX Series

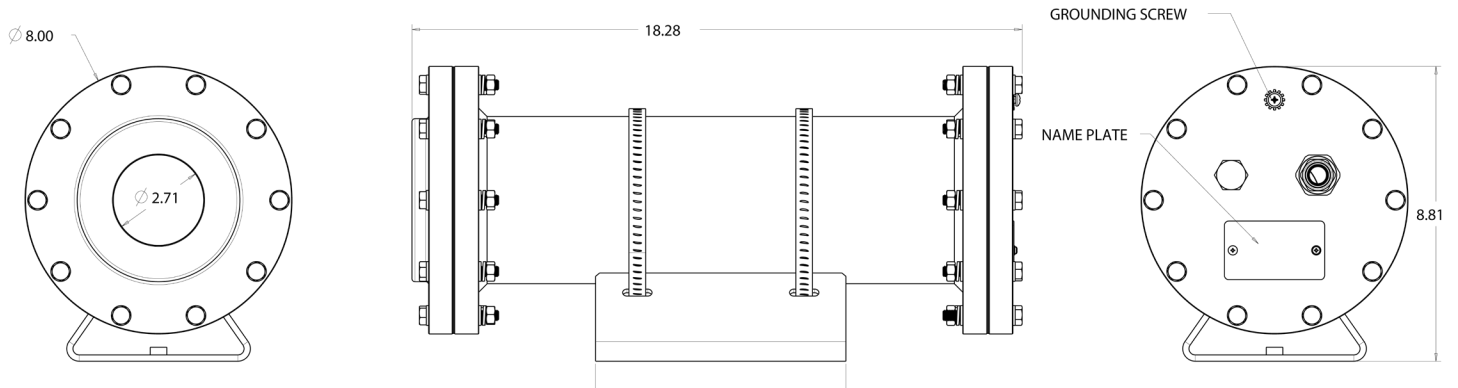
Explosion-Proof Housing

Dimensions

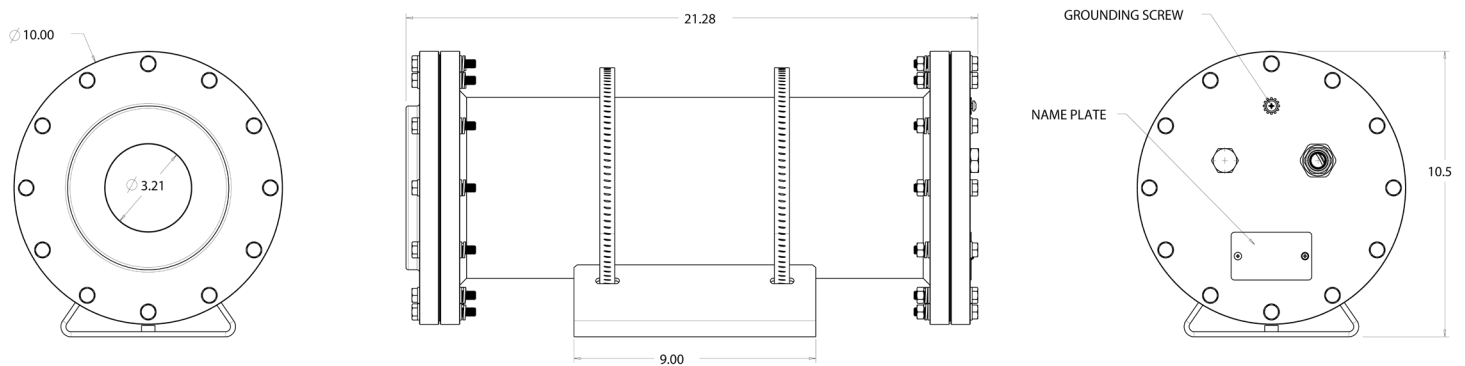
HEX-40140



HEX-50175



HEX-66205



Specifications are subject to change without notice.