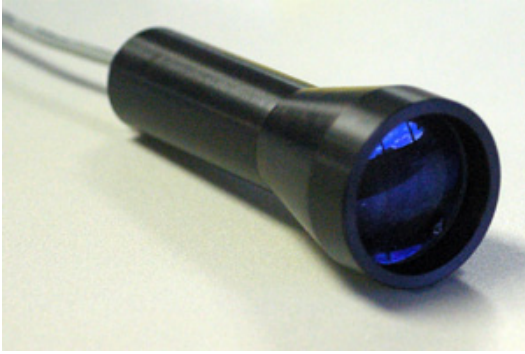


MetaBright™ Collimated Tube Backlight

Model#: MB-CBL-41



- Collimated spot size of 1.5"
- Compact housing for application integration (5.2" min length, 1.9" max diameter)
- Optional mounting clip available
- Multiple wavelength options
- 24V power supply (no special controller required)
- DC & Strobe version available
- DC version have 0 ~ 10V intensity control
- Ideal for producing high contrast silhouette images for edge detection & high accuracy measurement

Part #	Color	Power Supply	Specifications:
MB-CBL-41-W-24	White 6000 K	24 volt power supply available upon request.	Current Consumption 0.18A @24VDC
MB-CBL-41-R-24	Red 630nm		Finish Powder Coated Black
MB-CBL-41-B-24	Blue 455nm		Intensity Uniformity +/-5%
MB-CBL-41-G-24	Green 530nm		Weight 0.2lbs / 0.09kg
MB-CBL-41-IRN-24	Infrared 850nm		Operating Temperature 120° F Max
MB-CBL-41-IRL-24	Infrared 880nm		Compliance CE/RoHS
MB-CBL-41-UVL-24	UV 395nm		Lifetime Hours 75,000 Hours
MB-CBL-41-UVS-24	UV 365nm		Illuminance 5,000 lux / 62 Lumens

10 ft. flying leads come standard on all products.
Light features built-in constant current driver.
No expensive controller required, simply provide 24VDC.
0~10VDC intensity input.

Active Area	Dimensions
1.5in 38.1mm	5.18in x 1.90in 131.57mm x 48.26mm

Contact Us:
Contact your Metaphase Technologies Representative for options including: Diffuser Choice, Polarizer & Light Control Film, Specific Intensity & Uniformity, & Wavelength.

ORDERING INFORMATION:

• M B - C B L - 4 1 - - - 2 4 -

W	White 5500k	*BLANK	10 ft. Flying Leads
R	Red 630nm	T	M12 Quick Disconnect
G	Green 530nm	ILD	In Line Dimmer
B	Blue 455 nm	ILS	In Line Strobe (customer provide trigger info)
IRL	Infrared 880nm		
UVL	(long) 395nm		
UVS	(short) 365nm		

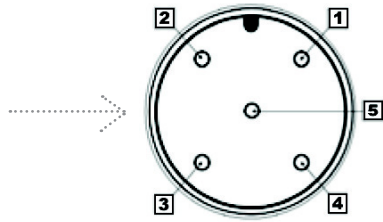
MetaBright™ Collimated Tube Backlight

Model#: MB-CBL-41

M12 Connector

PIN #	Function
1	+24VDC
2	0-10VDC Intensity Control
3	Ground
4	Signal Ground

24 AWG 4 WIRES CABLE X 1
 When not using intensity control, connect 0-10V control line to +24 (Max Intensity Control = 25V) and intensity control ground to ground

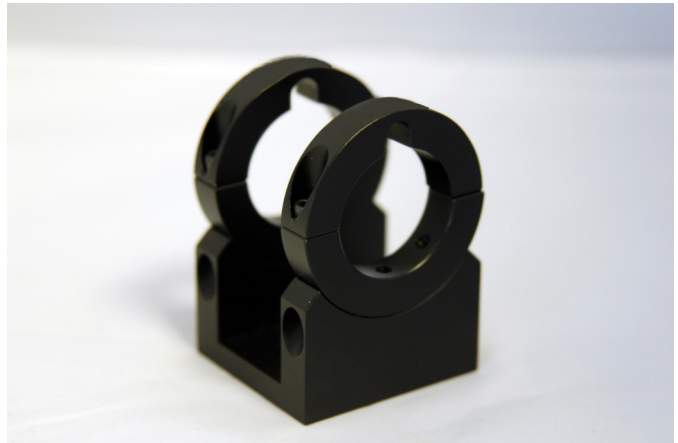
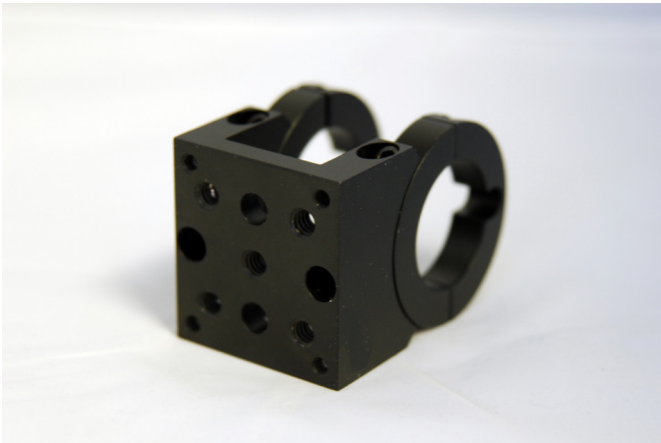


Wiring Diagram

Flying Leads	Function
RED	+24VDC
BLACK	Ground
WHITE	+24VDC
GREEN	Ground

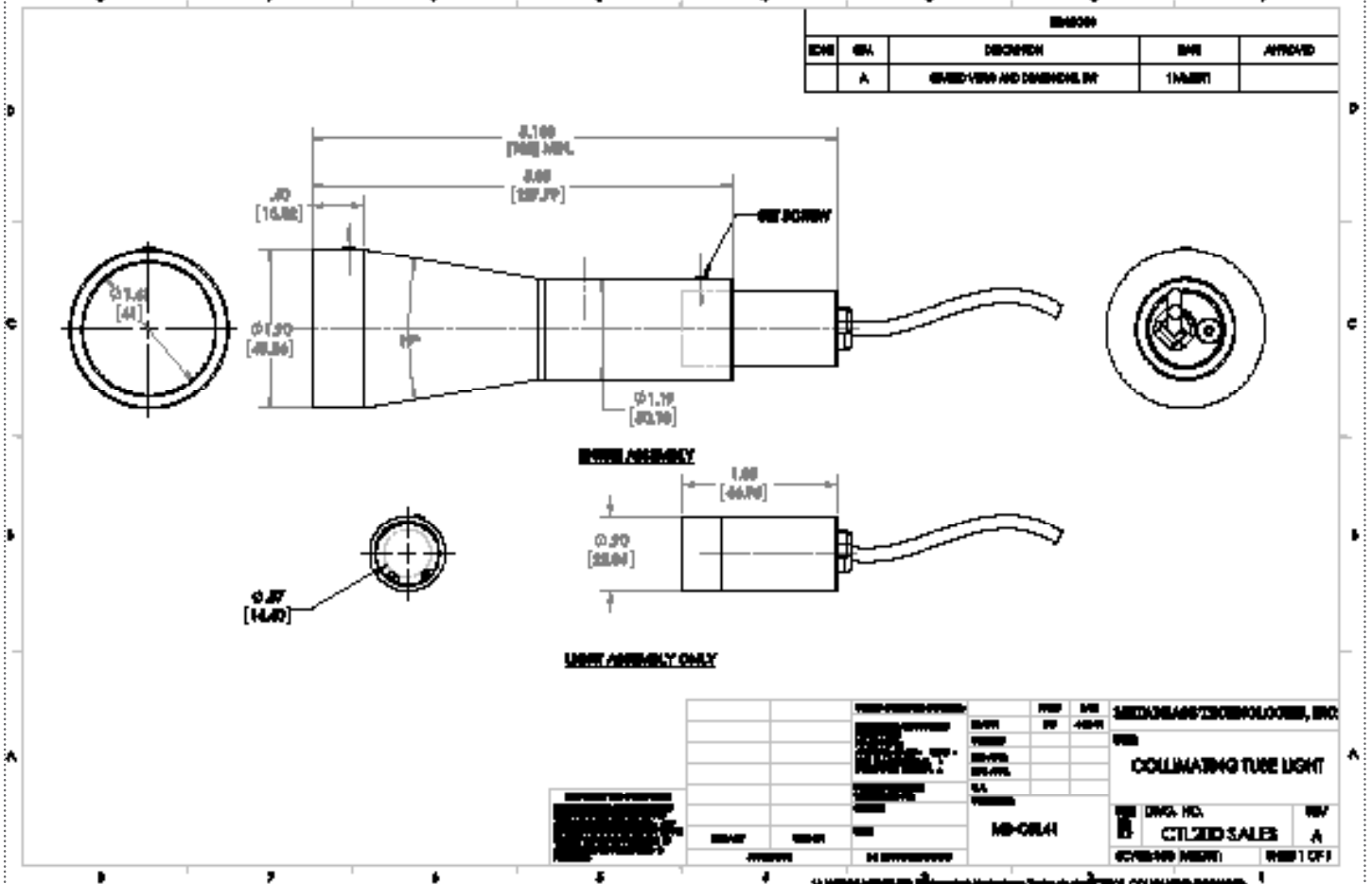
24 AWG 4 WIRES CABLE X 1
 When not using intensity control, connect 0-10V control line to +24 (Max Intensity Control = 25V) and intensity control ground to ground

Mounting Bracket (Optional): BRA-CBL-41



MetaBright™ Collimated Tube Backlight
 Model#: MB-CBL-41

Drawing/Diagram



945 East 11th Avenue Tampa, FL 33605

Phone: (813) 984-0125

Contact: Sales@pyramidimaging.com

<https://pyramidimaging.com>