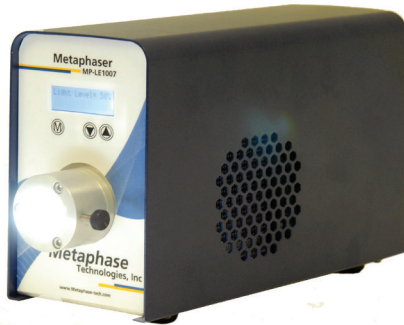


LED

MetaBright™ LED Light Engine Model:MB-LE1007



Metaphase Technologies MetaPhaser® LED MetaBright light engine with Super High Output are now available. Up to a 1400 % intensity improvement over 150 watt Halogen Hot Lights can now be achieved. Metaphase Technology Inc. sets a new performance benchmark with cool white LED intensities similar to a 250W Metal Halide light sources. The system is ideal for replacing older generation “hot light” fiber based illuminator systems and for green technology efficiency upgrade programs.

These systems are compact in size, economically priced, and very simple to operate. Each system is factory calibrated and pre-aligned for a corresponding nose piece adapter that ensures compatibility for new and retrofit fiber based light systems. No optical adjustments are required.

BENEFITS:

- Ideal for replacing older generation “hot light” fiber based illuminator systems
- Ideal for green technology efficiency upgrade programs
- Designed for fiber optics with light acceptance areas of 6 - 20mm
- Can mechanically accept fiber optics with outer housing diameter up to 20mm with Metaphase adaptor
- Digital-optical dimming control provides excellent color stability
- Similar to the brightness levels of 250-watt metal halide fiber illuminator technology
- Long life-time (75,000 hours)
- Lower power consumption (less than 100 watts)
- 60x less energy consumption than comparable “hot lights”
- Consistent color temperature during dimming and over time

APPLICATIONS:

- Microscopy
- Industrial Borescopes
- Inspection Systems
- Machine Vision
- High Speed QC
- Small Space Apps

RATINGS:



ELECTRICAL & CONTROLS:

Current Consumption	5A @ 12VDC
Light Intensity	+/-5%
Illuminance (DC Model)	6000 Lumens 1.7million Lux 2.2 Million Lux with optional Optical Condenser
Operating Temperature	-40°F(-45°) to 100°F (37.8°C)
Lifetime Hours	75,000 Hours

DOMINANT WAVELENGTH:

Part #	Color	Power Supply
MB-LE1007-W	White 5500K	Includes 12 Volt Power Supply
MB-LE1007-R	Red 630nm	
MB-LE1007-B	Blue 470nm	
MB-LE1007-G	Green 530nm	

HOUSING:

Dimensions	Length: 12.01in / 305.1mm Width: 4.10in / 104.1mm Height: 7.15in / 181.7mm
Weight	4lb / 1814g
Housing	Aluminum
Finish	Pearl Night Blue

UNIT POWER SUPPLY:

PS1007 12VDC Power Supply Included with Purchase

Preliminary: Specifications are subject to change
Copyright © Metaphase Technologies. All rights reserved

Buy American
metaphase-tech.com



Metaphase Technologies
3412 Progress Drive, Unit C
Bensalem PA, 19020 - USA

LED MetaBright™ LED Light Engine Model:MB-LE1007



SCREEN SHOTS:

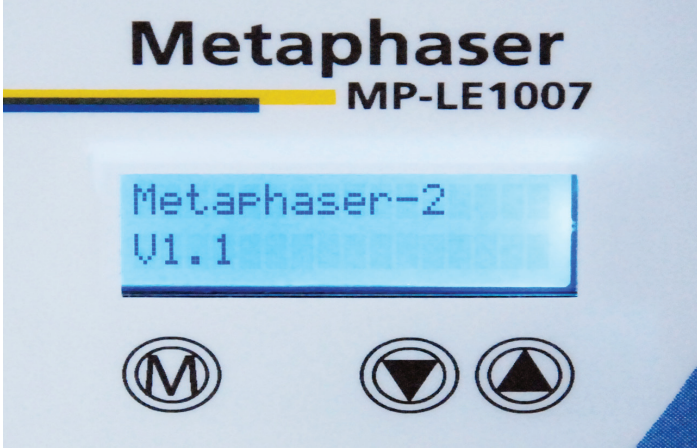
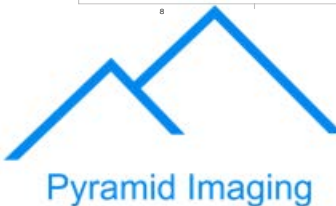
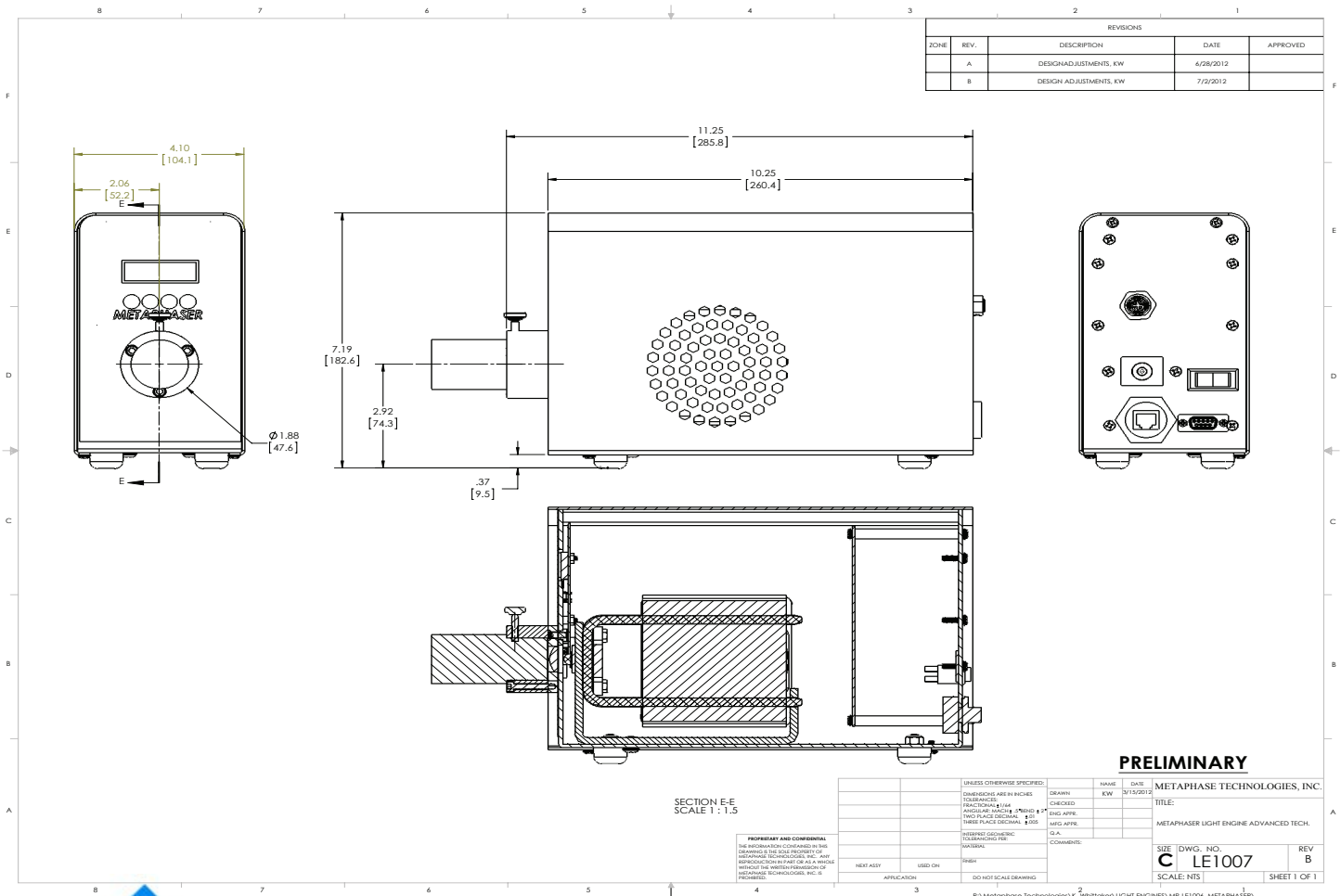


Image above shows the current Version of the MetaBOS Software and the initial launch screen.

This image displays menu to change the intensity of the Metaphaser using the up and down arrows. (0% - 100%)

DRAWING & DETAILS:



945 East 11th Avenue Tampa, FL 33605

Phone: (813) 984-0125

Contact: Sales@pyramidimaging.com

<https://pyramidimaging.com>