

# Metaphase LED Light Engine

Model#: MB-LE110



- Idea for applications with limited space
- Low power
- High intensity
- Small spotlight source
- Through-the-camera-lens illumination

## Dimensions

Length:	2.62in	66.6mm
Width:	1.28in	32.5mm

## Specifications:

Current Consumption	.4A @ 24VDC
Finish	Black Anodized
Color Temperature	6000k White
Operating Temperature	120° F Max
Compliance	CE/RoHS
Lifetime Hours	75,000 Hours

## Part #

## Color

MB-LE110-W-24	White 6000 K
MB-LE110-R-24	Red 630nm
MB-LE110-B-24	Blue 455nm
MB-LE110-G-24	Green 530nm
MB-LE110-IRN-24	Infrared 850nm
MB-LE110-IRL-24	Infrared 880nm
MB-LE110-UVL-24	UV 395nm
MB-LE110-UVS-24	UV 365nm

## Contact Us:

Contact your Metaphase Technologies Representative for options including: Filter Options, Power Options, & Wavelength.

## ORDERING INFORMATION:

• M B - L E 1 1 0 -  - 2 4 -

**W** White 5500k  
**R** Red 630nm  
**G** Green 530nm  
**B** Blue 455 nm  
**IRL** Infrared 880nm  
**UVL** (long) 395nm  
**UVS** (short) 365nm

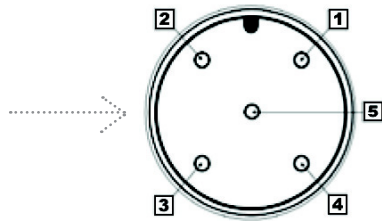
**\*BLANK** 10 ft. Flying Leads  
**T** M12 Quick Disconnect  
**ILD** In Line Dimmer  
**ILS** In Line Strobe (customer provide trigger info)

## Metaphase LED Light Engine

Model#: MB-LE110

### M12 Connector

PIN #	Function
1	+24VDC
2	0-10VDC Intensity Control
3	Ground
4	Signal Ground



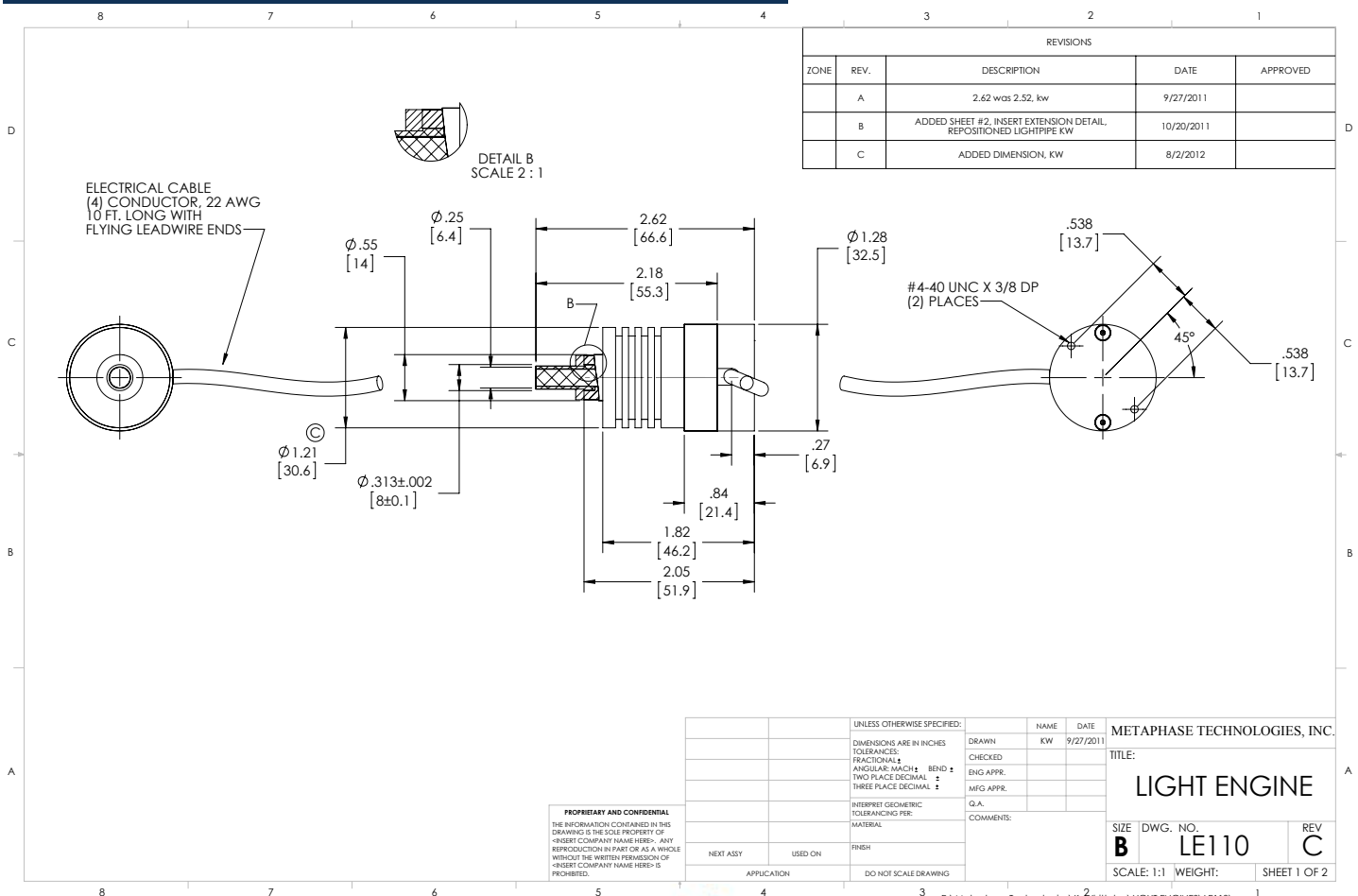
### Wiring Diagram

Flying Leads	Function
RED	+24VDC
BLACK	Ground
WHITE	0 ~ 10 Volt
GREEN	Ground

24 AWG 4 WIRES CABLE X 1

When not using intensity control, connect 0-10V control line to +24 (Max Intensity Control = 25V) and intensity control ground to ground

### Drawing/Diagram



945 East 11<sup>th</sup> Avenue Tampa, FL 33605

Phone: (813) 984-0125

Contact: Sales@pyramidimaging.com

<https://pyramidimaging.com>