

### MetaBright™ Diffuse Axial Light

Model#: MB-DAL105



- Size: 1 x 1 in active area
- Over thirty five SMD per inch array makes our diffuse axial lights the brightest most stable coaxial lighting in the industry
- 6 different sizes of diffuse axis light models to fit different application needs
- Exclusive optical beam splitter and diffuser stack
- Machined aluminum housing with optional dust covers

#### Specifications:

Current Consumption	R: 0.05A W/G/B: 0.04A
Housing	Alluminum
Finish	Powder Coated Black
Intensity Uniformity	+/-5%
Weight	0.7lb / .32kg
Operating Temperature	120° F Max
Illuminance	30,000 Lux
Compliance	CE/RoHS
Lifetime Hours	75,000 Hours

#### Wiring Diagram

Flying Leads	Function
RED	+24VDC
BLACK	Ground

24 AWG 4 WIRES CABLE X 1  
When not using intensity control, connect 0-10V control line to +24 (Max Intensity Control = 25V) and intensity control ground to ground

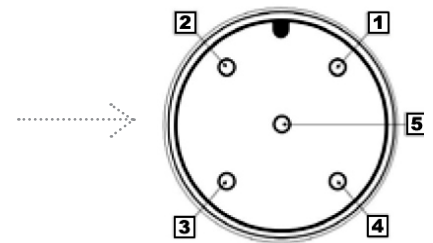
#### Active Area

#### Dimensions

1 x 1 in 25.4mm x 25.4mm	1.21in x 3.53in x 1.29in 30.6mm x 89.7mm x 32.8mm
-----------------------------	--

#### M12 Connector

PIN #	Function
1	+24VDC
3	Ground



#### ORDERING INFORMATION:

• D A L 1 0 5 -  - 2 4 -

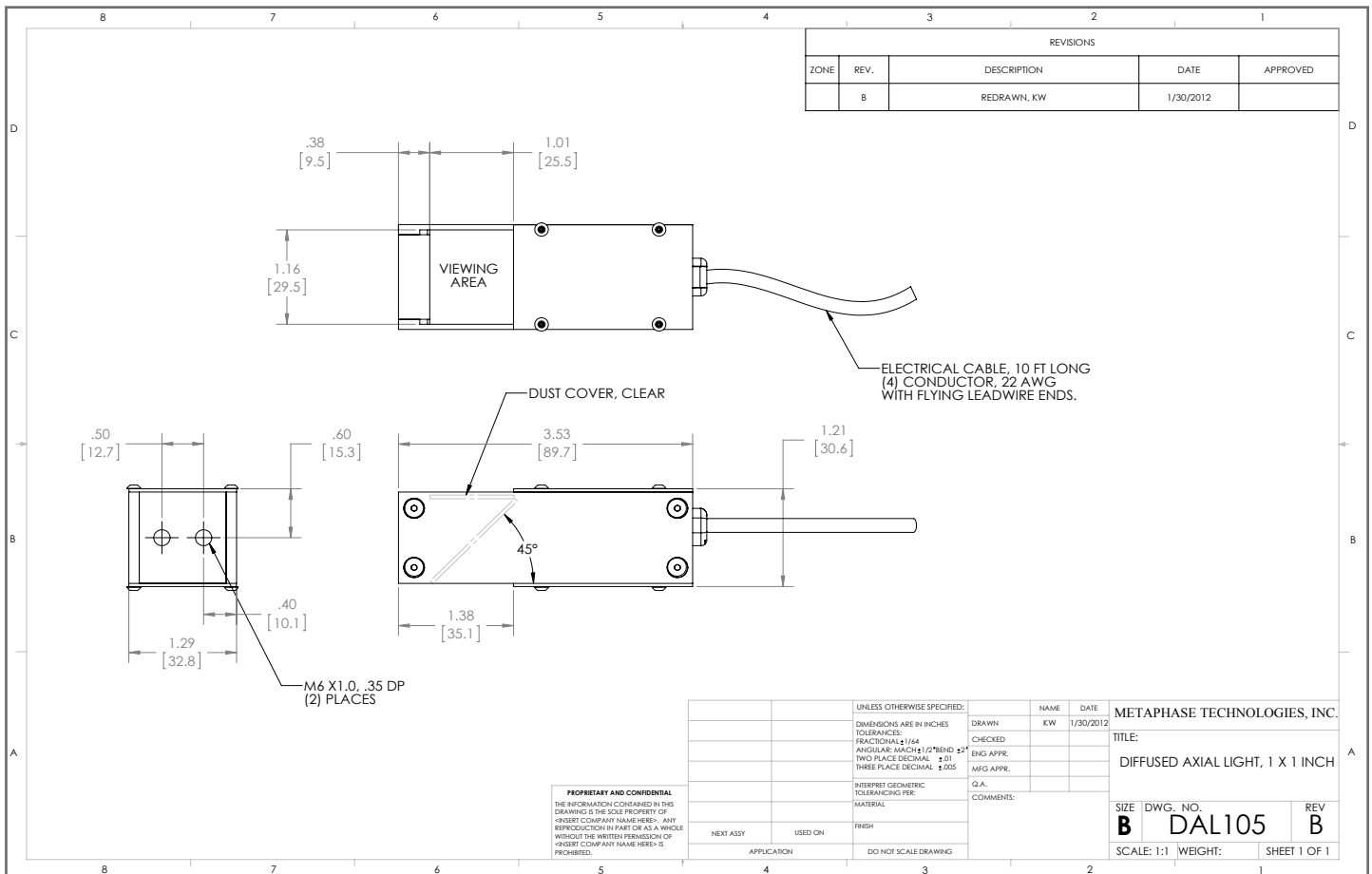
<b>W</b>	White 6000k	<b>*BLANK</b>	10 ft. Flying Leads
<b>R</b>	Red 630nm	<b>T</b>	M12 Quick Disconnect
<b>G</b>	Green 530nm	<b>ILD</b>	In Line Dimmer
<b>B</b>	Blue 455 nm	<b>ILS</b>	In Line Strobe (customer provide trigger info)
<b>IRN</b>	Infrared 850nm		
<b>RGB</b>	625/530/70nm		

## MetaBright™ Diffuse Axial Light Model#: MB-DAL105

### Contact us:

Contact your Metaphase Technologies Representative for options including: Diffuser Choice, Polarizer & Light Control Film, Specific Intensity & Uniformity, & Wavelength.

### Drawing/Diagram



945 East 11<sup>th</sup> Avenue Tampa, FL 33605

Phone: (813) 984-0125

Contact: Sales@pyramidimaging.com

<https://pyramidimaging.com>