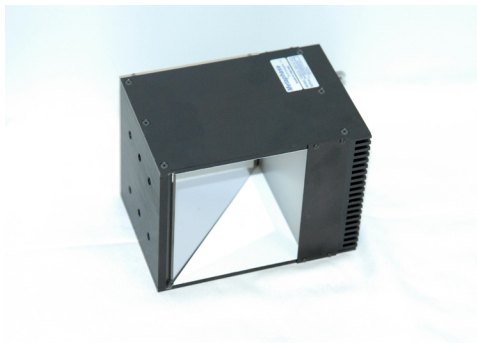


### MetaBright™ Diffuse Axial Light

Model#: DAL305



- Size: 3 x 3 in active area
- Over thirty five SMD per inch array makes our diffuse axial lights the brightest most stable coaxial lighting in the industry
- 6 different sizes of diffuse axis light models to fit different application needs
- Exclusive optical beam splitter and diffuser stack
- Machined aluminum housing with optional dust covers

#### Specifications:

Current Consumption	R: 0.6A W/G/B: 0.85A
Housing	Alluminum
Finish	Powder Coated Black
Intensity Uniformity	+/-5%
Operating Temperature	120° F Max
Illuminance	32,000 Lux
Compliance	CE/RoHS
Lifetime Hours	75,000 Hours

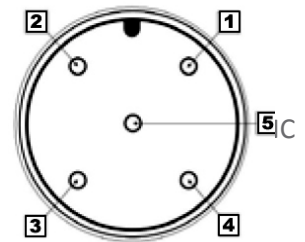
#### Wiring Diagram

Flying Leads	Function
RED	+24VDC
BLACK	Ground

24 AWG 4 WIRES CABLE X 1  
When not using intensity control, connect 0-10V control line to +24 (Max Intensity Control = 25V) and intensity control ground to ground

#### M12 Connector

PIN #	Function
1	+24VDC
2	0-10VDC Intensity Control
3	Ground
4	Signal Ground



#### Active Area

3 x 3in  
76.2mm x 76.2mm

#### Dimensions

3.36in x 5.3in x 3.32in  
85.24mm x 134.7mm x 84.33mm

#### ORDERING INFORMATION:

• D A L 3 0 5 -  - 2 4 -

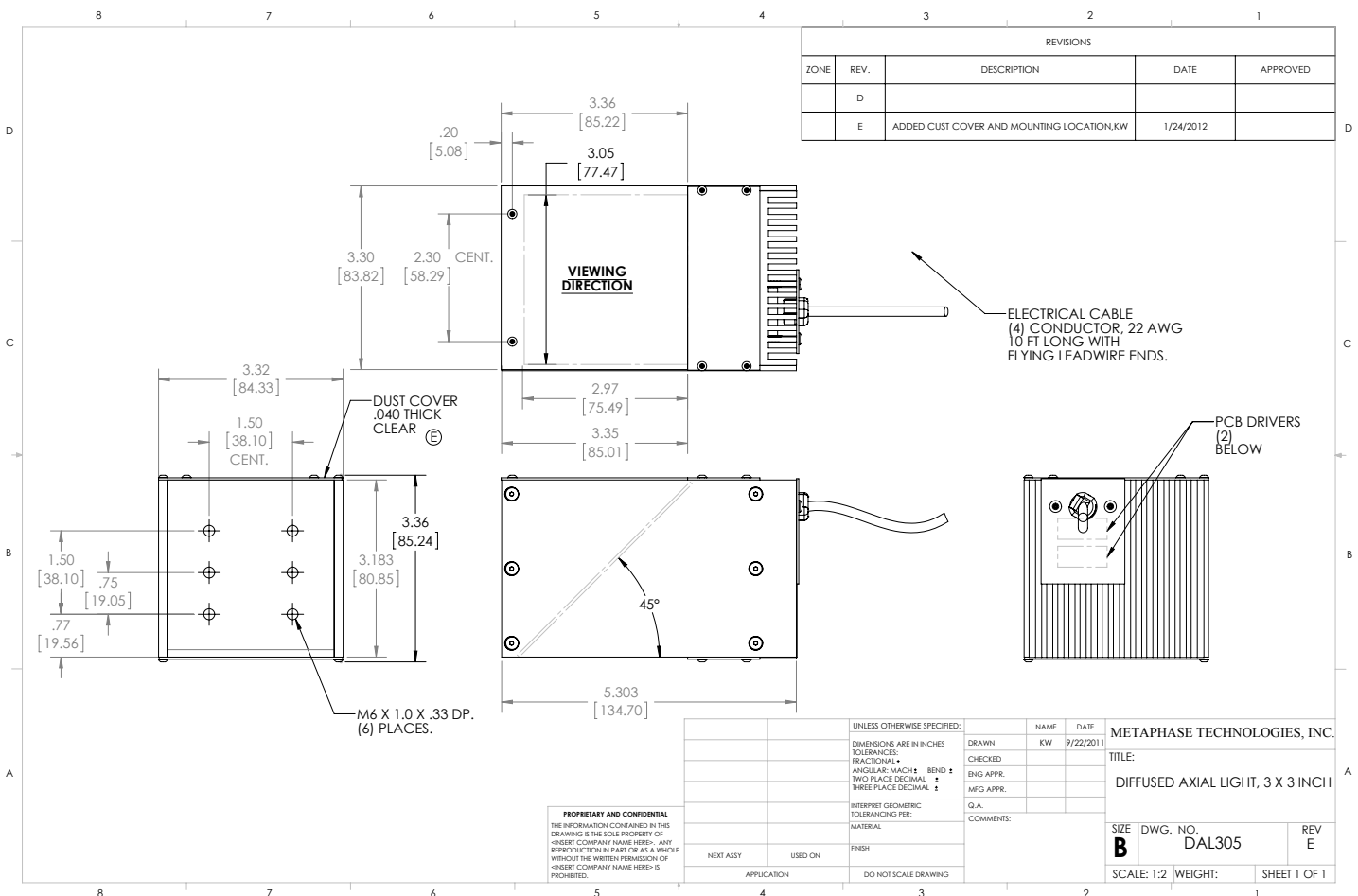
<b>W</b>	White 6000k	<b>*BLANK</b>	10 ft. Flying Leads
<b>R</b>	Red 630nm	<b>T</b>	M12 Quick Disconnect
<b>G</b>	Green 530nm	<b>ILD</b>	In Line Dimmer
<b>B</b>	Blue 455 nm	<b>ILS</b>	In Line Strobe (customer provide trigger info)
<b>IRN</b>	Infrared 850nm		
<b>RGB</b>	625/530/70nm		

## MetaBright™ Diffuse Axial Light Model#: DAL305

### Contact us:

Contact your Metaphase Technologies Representative for options including: Diffuser Choice, Polarizer & Light Control Film, Specific Intensity & Uniformity, & Wavelength.

### Drawing/Diagram



945 East 11<sup>th</sup> Avenue Tampa, FL 33605

Phone: (813) 984-0125

Contact: Sales@pyramidimaging.com

<https://pyramidimaging.com>