

MetaBright™ Diffuse Axial Light

Model#: DAL606



- Size: 6 x 6 in active area
- Over thirty five SMD per inch array makes our diffuse axial lights the brightest most stable coaxial lighting in the industry
- 6 different sizes of diffuse axis light models to fit different application needs
- Exclusive optical beam splitter and diffuser stack
- Machined aluminum housing with optional dust covers

Specifications:

Current Consumption	R: 0A W/G/B: 2.6A
Housing	Aluminum
Finish	Powder Coated Black
Intensity Uniformity	+/-5%
Operating Temperature	120° F Max
Illuminance	30,000 Lux
Compliance	CE/RoHS
Lifetime Hours	75,000 Hours

Wiring Diagram

Flying Leads	Function
RED/WHITE	+24VDC
BLACK/GREEN	Ground

24 AWG 4 WIRES CABLE X 1
When not using intensity control, connect 0-10V control line to +24 (Max Intensity Control = 25V) and intensity control ground to ground

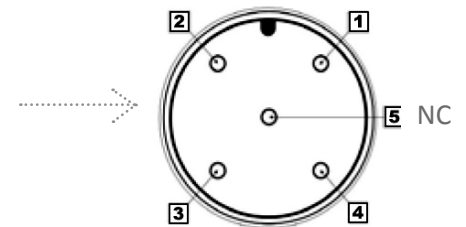
Active Area

Dimensions

6x6 in	9.19" x 6.08" x 6.00"
152.4mm x 152.4mm	233.4mm x 154.4mm x 152.4mm

M12 Connector

PIN #	Function
1	+24VDC
2	0~10V
3	Ground
4	S. Ground



ORDERING INFORMATION:

• D A L 6 0 6 - - 2 4 -

W	White 6000k	*BLANK	10 ft. Flying Leads
R	Red 630nm	T	M12 Quick Disconnect
G	Green 530nm	ILD	In Line Dimmer
B	Blue 455 nm	ILS	In Line Strobe (customer provide trigger info)
IRN	Infrared 850nm		
RGB	625/530/70nm		

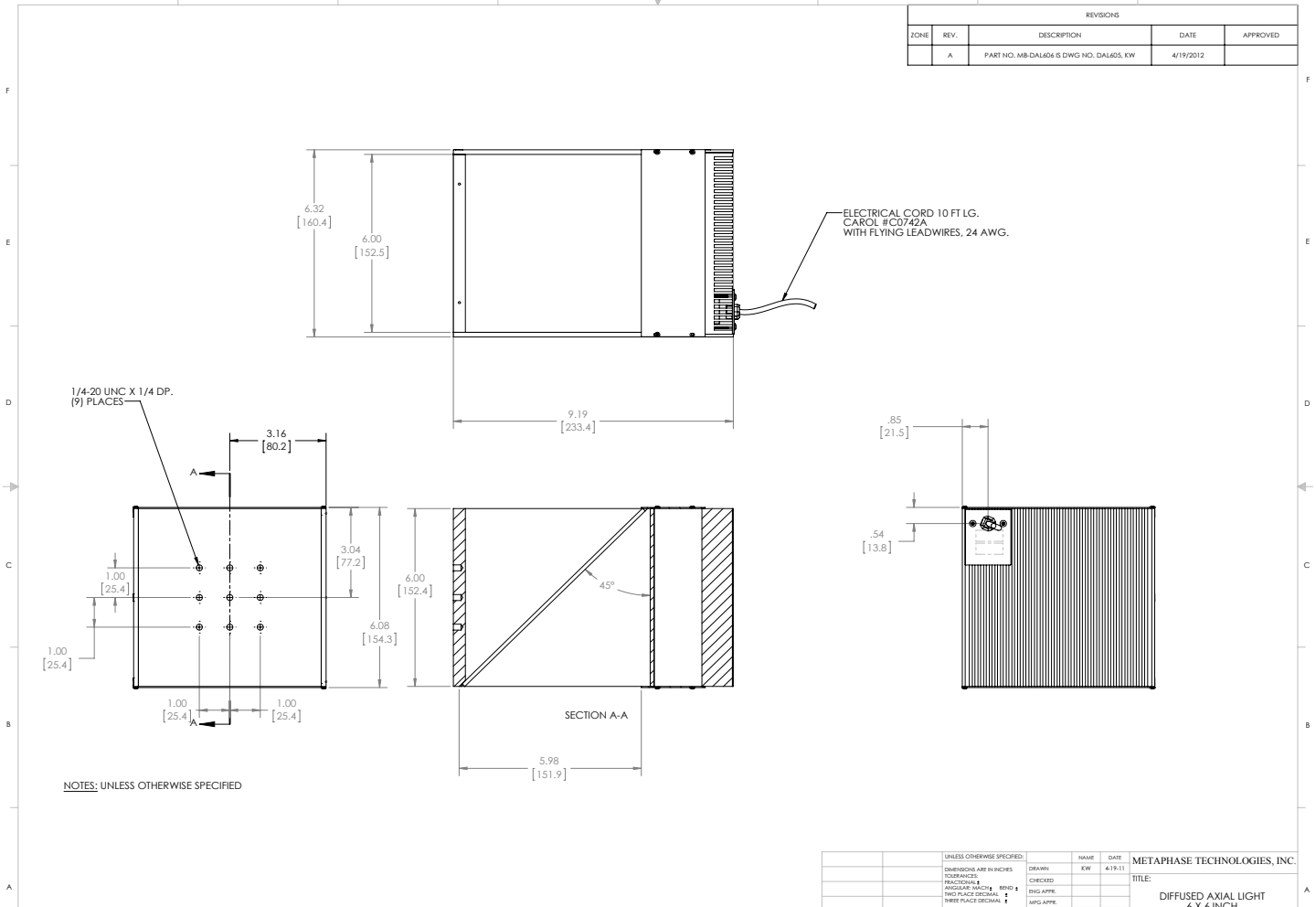
MetaBright™ Diffuse Axial Light Model#: DAL606

Contact us:

Contact your Metaphase Technologies Representative for options including: Diffuser Choice, Polarizer & Light Control Film, Specific Intensity & Uniformity, & Wavelength.

Drawing/Diagram

REVISIONS				
ZONE	REV.	DESCRIPTION	DATE	APPROVED
A		PART NO. MB-DAL606 S DWG NO. DAL605, KW	4/19/2012	



UNLESS OTHERWISE SPECIFIED:		NAME	DATE	METAPHASE TECHNOLOGIES, INC.
DIMENSIONS ARE IN INCHES		DRAWN	4-19-11	TITLE:
TOLERANCES		EW		DIFFUSED AXIAL LIGHT
FRACTIONAL & DECIMAL		CHECKED		6 X 6 INCH
HOLE DIA. & BORE DIA. ± .0004		ENG'N		
HOLE PLACE DECIMAL ± .0004		MFG APPL.		
HOLE PLACE DECIMAL ± .0004		G.A.		
HOLE PLACE DECIMAL ± .0004		CHECKED		
HOLE PLACE DECIMAL ± .0004		DATE		
HOLE PLACE DECIMAL ± .0004		PART NO.		
HOLE PLACE DECIMAL ± .0004		MB-DAL606		
HOLE PLACE DECIMAL ± .0004		SIZE		
HOLE PLACE DECIMAL ± .0004		C		
HOLE PLACE DECIMAL ± .0004		DWG. NO.		
HOLE PLACE DECIMAL ± .0004		DAL605		
HOLE PLACE DECIMAL ± .0004		SCALE: 1:2		
HOLE PLACE DECIMAL ± .0004		WEIGHT:		
HOLE PLACE DECIMAL ± .0004		REV		
HOLE PLACE DECIMAL ± .0004		A		
HOLE PLACE DECIMAL ± .0004		SHEET 1 OF 2		

945 East 11th Avenue Tampa, FL 33605

Phone: (813) 984-0125

Contact: Sales@pyramidimaging.com

<https://pyramidimaging.com>

