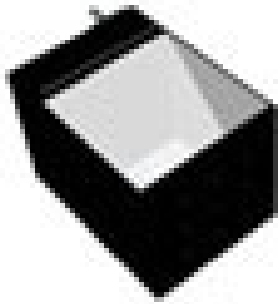


MetaBright™ Diffuse Axial Light

Model#: DAL806



- Size: 8 x 8in
- Over thirty five SMD per inch array makes our diffuse axial lights the brightest most stable coaxial lighting in the industry
- 6 different sizes of diffuse axis light models to fit different application needs
- Exclusive optical beam splitter and diffuser stack
- Machined aluminum housing with optional dust covers

Specifications:

Current Consumption	R: A W/G/B: 3.0A
Housing	Aluminum
Finish	Powder Coated Black
Intensity Uniformity	+/-5%
Operating Temperature	120° F Max
Illuminance	70,000 Lux
Compliance	CE/RoHS
Lifetime Hours	75,000 Hours

Wiring Diagram

Flying Leads	Function
RED	+24VDC
BLACK	Ground

24 AWG 4 WIRES CABLE X 1
When not using intensity control, connect 0-10V control line to +24 (Max Intensity Control = 25V) and intensity control ground to ground

Active Area

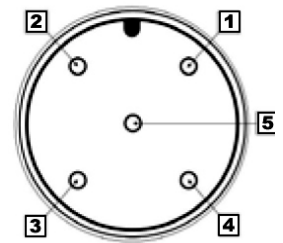
8in x 8in
203.2mm x 203.2mm

Dimensions

8.38in x 10.5in x 8.2in
212.8mm x 266.7mm x 208.28mm

M12 Connector

PIN #	Function
1	+24VDC
3	Ground



ORDERING INFORMATION:

• D A L 8 0 6 - - 2 4 -

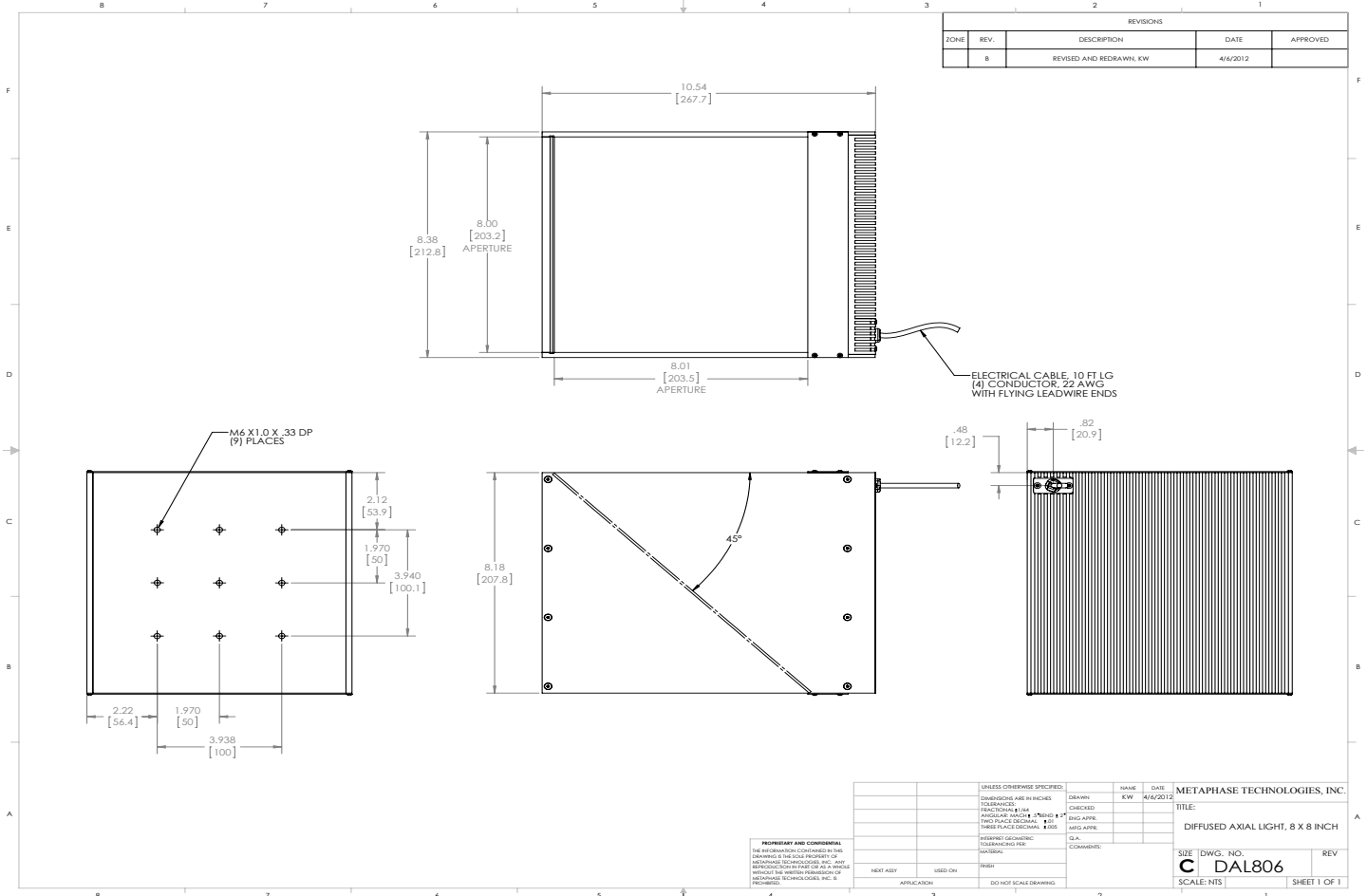
W	White 6000k	*BLANK	10 ft. Flying Leads
R	Red 630nm	T	M12 Quick Disconnect
G	Green 530nm	ILD	In Line Dimmer
B	Blue 455 nm	ILS	In Line Strobe (customer provide trigger info)
IRN	Infrared 850nm		
RGB	625/530/70nm		

MetaBright™ Diffuse Axial Light Model#: DAL806

Contact us:

Contact your Metaphase Technologies Representative for options including: Diffuser Choice, Polarizer & Light Control Film, Specific Intensity & Uniformity, & Wavelength.

Drawing/Diagram



945 East 11th Avenue Tampa, FL 33605

Phone: (813) 984-0125

Contact: Sales@pyramidimaging.com

<https://pyramidimaging.com>