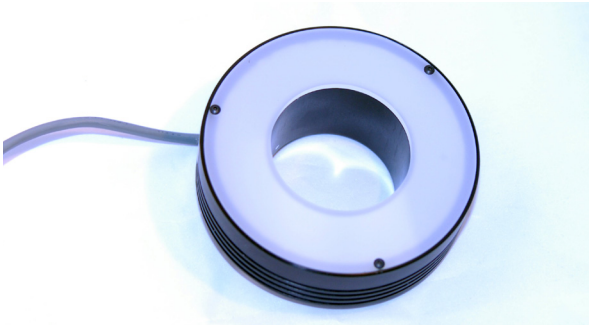


MetaBright™ Ringlight

Model#: MB-RL301



- Configurable for various wavelengths including IR, UV, RGB
- Continuous, Dimming, and Strobbing controllability modes
- Homogenous light output
- Brightfield and Darkfield illumination
- One-piece machined aluminum housings
- Thermal potting assures long life performance in rugged environments.

| Part # | Color | Power Supply | Specifications: | |
|--|----------------|--|-----------------------|---------------------|
| MB-RL301-W-24 | White 6000 K | 24 volt power supply available upon request. | Current Consumption | 0.9A |
| MB-RL301-R-24 | Red 630nm | | Finish | Powder Coated Black |
| MB-RL301-B-24 | Blue 455nm | | Intensity Uniformity | +/-5% |
| MB-RL301-G-24 | Green 530nm | | Weight | .22kg |
| MB-RL301-IRN-24 | Infrared 850nm | | Operating Temperature | 120° F Max |
| MB-RL301-IRL-24 | Infrared 880nm | | Compliance | CE/RoHS |
| <p>10 ft. flying leads come standard on all products. Light features built-in constant current driver. No expensive controller required.</p> | | | Lifetime Hours | 75,000 Hours |

Contact us:

Contact your Metaphase Technologies Representative for options including: Diffuser Choice, Polarizer & Light Control Film, Specific Intensity & Uniformity, & Wavelength.

ORDERING INFORMATION:

• M B - R L 3 0 1 - - 2 4 -

| | | | |
|------------|----------------|---------------|--|
| W | White 5500k | *BLANK | 10 ft. Flying Leads |
| R | Red 630nm | T | M12 Quick Disconnect |
| G | Green 530nm | ILD | In Line Dimmer |
| B | Blue 455 nm | ILS | In Line Strobe (customer provide trigger info) |
| IRL | Infrared 880nm | | |
| UVL | (long) 395nm | | |
| UVS | (short) 365nm | | |

MetaBright™ Ring Light Model#: MB-RL301

Wiring Diagram

Flying Leads Function

RED +24VDC

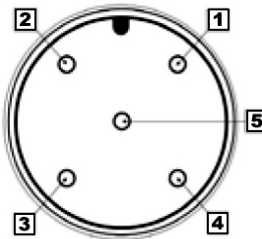
BLACK Ground

WHITE 0~10VDC

GREEN Ground

M12 Connector

| PIN # | Function |
|-------|---------------------------|
| 1 | +24VDC |
| 2 | 0-10VDC Intensity Control |
| 3 | Ground |
| 4 | Signal Ground |



24 AWG 4 WIRES CABLE X 1

When not using intensity control, connect 0-10V control line to +24 (Max Intensity Control = 25V) and intensity control ground to ground

Drawing/Diagram

| REVISIONS | | | | |
|-----------|------|-----------------------------------|------------|----------|
| ZONE | REV. | DESCRIPTION | DATE | APPROVED |
| | B | REDRAWN IN SOLIDWORKS, KW | 11/18/2011 | |
| | C | ADDED MOUNTING HOLE LOCATIONS, KW | 4/27/2012 | |

UNLESS OTHERWISE SPECIFIED:

DIMENSIONS ARE IN INCHES
TOLERANCES:
FRACTIONAL ±
ANGULAR MATCH ±
BEND ±
TWO PLACE DECIMAL ±
THREE PLACE DECIMAL ±

INTERPRET GEOMETRIC TOLERANCING PER MATERIAL

PROPRIETARY AND CONFIDENTIAL
THE INFORMATION CONTAINED IN THIS DRAWING IS THE SOLE PROPERTY OF METAPHASE TECHNOLOGIES, INC. ANY REPRODUCTION IN PART OR AS A WHOLE WITHOUT THE WRITTEN PERMISSION OF METAPHASE TECHNOLOGIES, INC. IS PROHIBITED.

| | | |
|------------|------------|------------------------------|
| NAME | DATE | METAPHASE TECHNOLOGIES, INC. |
| KW | 11/18/2011 | |
| DRAWN | | TITLE: |
| CHECKED | | RING LIGHT, 5 INCH |
| ENG APPR. | | |
| MFG APPR. | | |
| Q.A. | | |
| COMMENTS: | | |
| SIZE | DWG. NO. | REV |
| B | RL301 | C |
| SCALE: 1:2 | WEIGHT: | SHEET 1 OF 1 |



945 East 11th Avenue Tampa, FL 33605

Phone: (813) 984-0125

Contact: Sales@pyramidimaging.com

https://pyramidimaging.com