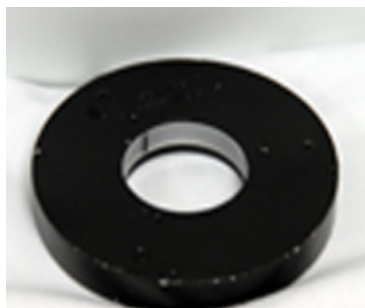


# MetaLight™ Round Off-Axis Ring Light

Model#: ROARL101

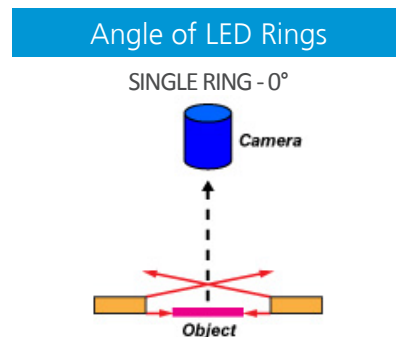


- Horizontal Plane of Light
- Useful for Highlighting Surface Defects
- Illuminates Specular Surfaces
- Configurable for Wavelength
- Economical

Part #	Color	Power Supply	Specifications:
ROARL101-W-24	White 5500K	24 volt power supply available upon request.	Current Consumption 0.1A
ROARL101-R-24	Red 630nm		Housing Anodized Aluminum
ROARL101-B-24	Blue 455nm		Intensity Uniformity +/-5%
ROARL101-G-24	Green 530nm		Operating Temperature 120° F Max
ROARL101-IRN-24	Infrared 850nm		Illuminance 75,000 Lux
ROARL101-IRL-24	Infrared 880nm		Compliance CE/RoHS
ROARL101-UVL-24	UV 395nm		Lifetime Hours 75,000 Hours
ROARL101-UVS-24	UV 365nm		

10 ft. flying leads come standard on all products.  
Light features built-in constant current driver.  
No expensive controller required.

Active Area	Dimensions
Ø2in Aperture Ø50.8mm Aperture	Ø3.80in x .67in Ø96.5mm x 16.9mm



### ORDERING INFORMATION:

• R O A R L 1 0 1	-	<input type="checkbox"/>	-	2 4	-	<input type="checkbox"/>	
<b>W</b>		White 5500k				<b>*BLANK</b>	10 ft. Flying Leads
<b>R</b>		Red 630nm				<b>T</b>	M12 Quick Disconnect
<b>G</b>		Green 530nm				<b>ILD</b>	In Line Dimmer
<b>B</b>		Blue 455 nm				<b>ILS</b>	In Line Strobe (customer provide trigger info)
<b>IRL</b>		Infrared 880nm					
<b>UVL</b>		(long) 395nm					
<b>UVS</b>		(short) 365nm					

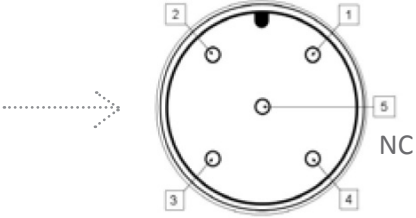
## MetaLight™ Linear Front Light Model#: ROARL101

### Wiring Diagram

Flying Leads	Function
RED	+24VDC
BLACK	Ground
WHITE	+24VDC
GREEN	Ground

### M12 Connector

PIN #	Function
1	+24VDC
2	0-10VDC Intensity Control
3	Ground
4	Signal Ground



24 AWG 4 WIRES CABLE X 1

When not using intensity control, connect 0-10V control line to +24 (Max Intensity Control = 25V) and intensity control ground to ground

### Drawing/Diagram

REVISIONS				
ZONE	REV.	DESCRIPTION	DATE	APPROVED
	D	REDRAWN IN SOLIDWORKS, KW	5/1/2012	

Ø3.80 [96.5]

Ø2.00 [50.8] APERTURE

ELECTRICAL CABLE, 10 FT LG. (4) CONDUCTOR, 22 AWG WITH FLYING LEADWIRE ENDS.

.67 [16.9]

CAMERA SIDE

4-40 UNC X.17 DP BOTTOM TAP (4) PLACES

.37 [9.3]

1.17 [29.7]

2.34 [59.4]

45°

1.17 [29.7]

2.34 [59.4]

<small>PROPRIETARY AND CONFIDENTIAL</small> <small>THE INFORMATION CONTAINED IN THIS DRAWING IS THE SOLE PROPERTY OF METAPHASE TECHNOLOGIES, INC. ANY REPRODUCTION IN PART OR AS A WHOLE WITHOUT THE WRITTEN PERMISSION OF METAPHASE TECHNOLOGIES, INC. IS PROHIBITED.</small>		UNLESS OTHERWISE SPECIFIED:		NAME	DATE	METAPHASE TECHNOLOGIES, INC.		
		DIMENSIONS ARE IN INCHES		DRAWN	KW		5/1/2012	
TOLERANCES:		FRACTIONAL ±1/64		CHECKED		TITLE:		
ANGULAR: MINUS ±1/2° MINUS ±2°		TWO PLACE DECIMAL ±.01		ENG APPR.		ROUND OFF AXIS RING LIGHT, 2 INCH		
THREE PLACE DECIMAL ±.005		MATERIAL:		Q.A.				
INTERPRET GEOMETRIC TOLERANCING PER:		FINISH		COMMENTS:				
NEXT ASSY	USED ON	APPLICATION		DO NOT SCALE DRAWING		SIZE DWG. NO. <b>B</b> ROARL101 REV <b>D</b>		
						SCALE: 1:1	WEIGHT:	SHEET 1 OF 1



**Pyramid Imaging**  
 945 East 11th Avenue Tampa, FL 33605  
 sales@pyramidimaging.com  
 www.pyramidimaging.com  
 813-786-3785