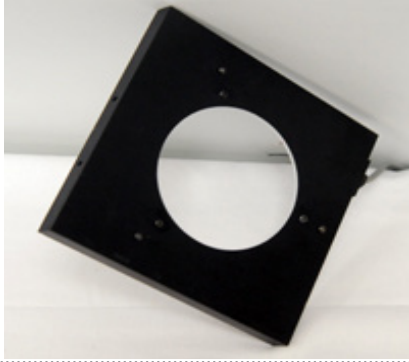


MetaLight™ 1- Ring Off-Axis Ring Light

Model#: OARL221



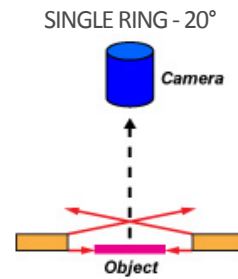
- Horizontal Plane of Light
- Useful for Highlighting Surface Defects
- Illuminates Specular Surfaces
- Configurable for Wavelength
- Economical

Part #	Color	Power Supply	Specifications:
OARL221-W-24	White 5500K	24 volt power supply available upon request.	Current Consumption 0.2A
OARL221-R-24	Red 630nm		Housing Aluminum
OARL221-B-24	Blue 455nm		Finish Black Anodized
OARL221-G-24	Green 530nm		Intensity Uniformity +/-5%
OARL221-IRN-24	Infrared 850nm		Operating Temperature 120° F Max
OARL221-IRL-24	Infrared 880nm		Illuminance 12,000 Lux
OARL221-UVL-24	UV 395nm		Compliance CE/RoHS
OARL221-UVS-24	UV 365nm		Lifetime Hours 75,000 Hours

10 ft. flying leads come standard on all products.
 Light features built-in constant current driver.
 No expensive controller required.

Active Area	Dimensions
Ø4in Aperture Ø101.6mm Aperture	L: 7in / 177.8mm W: 7in / 177.8mm H: 0.56in / 14.22mm

Angle of LED Rings



ORDERING INFORMATION:

• O A R L 2 2 1	-	<input type="checkbox"/>	- 2 4 -	<input type="checkbox"/>	
W		White 5500k		*BLANK	10 ft. Flying Leads
R		Red 630nm		T	M12 Quick Disconnect
G		Green 530nm		ILD	In Line Dimmer
B		Blue 455 nm		ILS	In Line Strobe (customer provide trigger info)
IRL		Infrared 880nm			
UVL		(long) 395nm			
UVS		(short) 365nm			

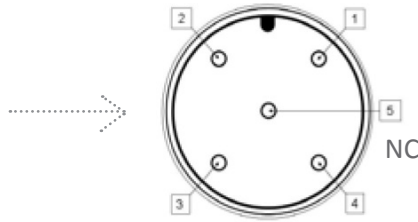
MetaLight™ 1-Ring Off-Axis Front Light Model#: OARL221

Wiring Diagram

Flying Leads	Function
RED	+24VDC
BLACK	Ground
WHITE	+24VDC
GREEN	Ground

M12 Connector

PIN #	Function
1	+24VDC
2	0-10VDC Intensity Control
3	Ground
4	Signal Ground



24 AWG 4 WIRES CABLE X 1

When not using intensity control, connect 0-10V control line to +24 (Max Intensity Control = 25V) and intensity control ground to ground

Drawing/Diagram

#8-32 UNC X .23 DP.
(2) PLACES
BOTH SIDES
(4) HOLES TOTAL

10 FT. CABLE WITH FLYING LEADS.

REVISIONS				
ZONE	REV.	DESCRIPTION	DATE	APPROVED
	B	REVISED AND REDRAWN, KW	1/21/2011	
	C	ADDED USED ON ASSEMBLIES, KW	4/24/2012	

Pyramid Imaging
945 East 11th Avenue Tampa, FL 33605
sales@pyramidimaging.com
www.pyramidimaging.com
813-786-3785

UNLESS OTHERWISE SPECIFIED:		NAME	DATE	METAPHASE TECHNOLOGIES, INC.
DIMENSIONS ARE IN INCHES		DRAWN		TITLE:
TOLERANCES:		CHECKED		RING LIGHT, OFF AXIS
FRACTIONAL ±		ENG APPR.		4 INCH (101.6) DIA. Ⓟ
ANGULAR: MACH ±		MFG APPR.		
BEND ±				
TWO PLACE DECIMAL ±				
THREE PLACE DECIMAL ±				
INTERPRET GEOMETRIC TOLERANCING PER:		G.A.		SIZE DWG. NO.
MATERIAL		COMMENTS:		B OARL201 REV C
PROPRIETARY AND CONFIDENTIAL	© OARL241			SCALE: 1:2 WEIGHT:
THE INFORMATION CONTAINED IN THIS DRAWING IS THE SOLE PROPERTY OF	© OARL221			SHEET 1 OF 1
©BSEET COMPANY NAME HERE. ANY REPRODUCTION IN PART OR AS A WHOLE WITHOUT THE WRITTEN PERMISSION OF	NEXT ASSY	USED ON	FINISH	
©BSEET COMPANY NAME HERE IS PROHIBITED.	APPLICATION		DO NOT SCALE DRAWING	