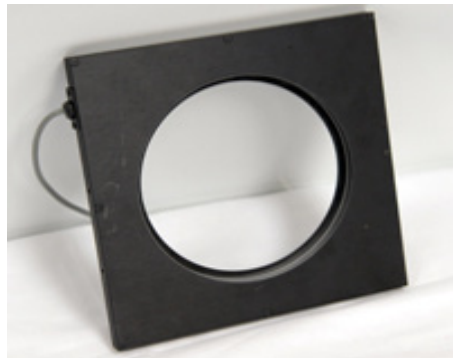


MetaLight™ 1- Ring Off-Axis Ring Light

Model#: OARL301



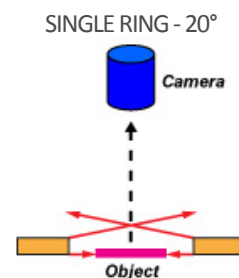
- Horizontal Plane of Light
- Useful for Highlighting Surface Defects
- Illuminates Specular Surfaces
- Configurable for Wavelength
- Economical

Part #	Color	Power Supply	Specifications:
OARL301-W-24	White 5500K	24 volt power supply available upon request.	Current Consumption 0.3A
OARL301-R-24	Red 630nm		Housing Aluminum
OARL301-B-24	Blue 455nm		Finish Black Anodized
OARL301-G-24	Green 530nm		Intensity Uniformity +/-5%
OARL301-IRN-24	Infrared 850nm		Operating Temperature 120° F Max
OARL301-IRL-24	Infrared 880nm		Compliance CE/RoHS
OARL301-UVL-24	UV 395nm		Lifetime Hours 75,000 Hours
OARL301-UVS-24	UV 365nm		

10 ft. flying leads come standard on all products.
Light features built-in constant current driver.
No expensive controller required.

Active Area	Dimensions
∅6in Aperture ∅152.4mm Aperture	L: 9in / 228.6mm W: 9in / 228.6mm H: 0.56in / 14.22mm

Angle of LED Rings



ORDERING INFORMATION:

• O A R L 3 0 1 - - 2 4 -

W	White 5500k	*BLANK	10 ft. Flying Leads
R	Red 630nm	T	M12 Quick Disconnect
G	Green 530nm	ILD	In Line Dimmer
B	Blue 455 nm	ILS	In Line Strobe (customer provide trigger info)
IRL	Infrared 880nm		
UVL	(long) 395nm		
UVS	(short) 365nm		

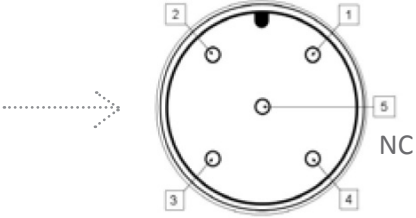
MetaLight™ 1-Ring Off-Axis Front Light Model#: OARL301

Wiring Diagram

Flying Leads	Function
RED	+24VDC
BLACK	Ground
WHITE	+24VDC
GREEN	Ground

M12 Connector

PIN #	Function
1	+24VDC
2	0-10VDC Intensity Control
3	Ground
4	Signal Ground



24 AWG 4 WIRES CABLE X 1

When not using intensity control, connect 0-10V control line to +24 (Max Intensity Control = 25V) and intensity control ground to ground

Drawing/Diagram

REVISIONS				
ZONE	REV.	DESCRIPTION	DATE	APPROVED
	A	REDRAWN IN SOLIDWORKS, KW	11/29/2011	

ELECTRICAL CABLE, 10 FT LONG (4) CONDUCTOR, 22 AWG WITH FLYING LEADWIRE ENDS.

#8-32 UNC X 3/16 DP (2) PLACES, AS SHOWN, BOTH SIDES (4) HOLES TOTAL.

Ø 6.00 [152.4] (FARSIDE)

Ø 6.50 [165.1]

9.00 [228.6]

4.50 [114.3]

9.00 [228.6]

.64 [16.2]

.281 [7.1]

.58 [14.7]

PROPRIETARY AND CONFIDENTIAL
THE INFORMATION CONTAINED IN THIS DRAWING IS THE SOLE PROPERTY OF METAPHASE TECHNOLOGIES, INC. ANY REPRODUCTION IN PART OR AS A WHOLE WITHOUT THE WRITTEN PERMISSION OF METAPHASE TECHNOLOGIES, INC. IS PROHIBITED.

UNLESS OTHERWISE SPECIFIED:	NAME	DATE	METAPHASE TECHNOLOGIES, INC.
DIMENSIONS ARE IN INCHES	DRAWN	KW	11/29/2011
TOLERANCES	CHECKED		TITLE:
FRACTIONAL ±	ENG APPR.		RING LIGHT, OFF AXIS, 6 INCH
ANGULAR: MINUS ±	MFG APPR.		
BEND ±	G.A.		
TWO PLACE DECIMAL ±	COMMENTS:		
THREE PLACE DECIMAL ±			
INTERPRET GEOMETRIC TOLERANCING PER:			
MATERIAL:			
FINISH			
APPLICATION			

SCALE: 1:2 WEIGHT: SHEET 1 OF 1

Pyramid Imaging

945 East 11th Avenue Tampa, FL 33605
sales@pyramidimaging.com
www.pyramidimaging.com
813-786-3785