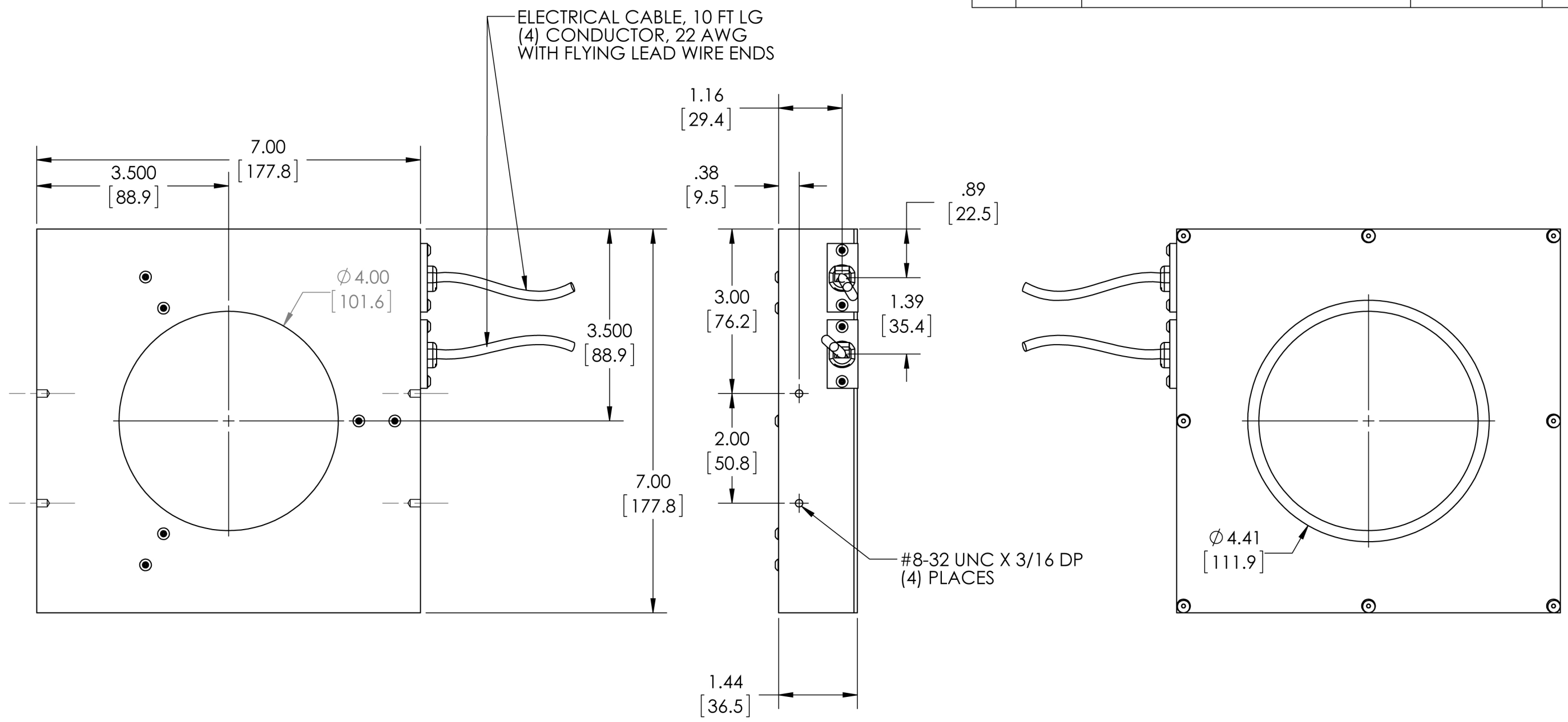


REVISIONS				
ZONE	REV.	DESCRIPTION	DATE	APPROVED



945 East 11th Avenue Tampa, FL 33605
 Phone: (813) 984-0125
 Contact: Sales@pyramidimaging.com
<https://pyramidimaging.com>

PROPRIETARY AND CONFIDENTIAL
 THE INFORMATION CONTAINED IN THIS DRAWING IS THE SOLE PROPERTY OF <INSERT COMPANY NAME HERE>. ANY REPRODUCTION IN PART OR AS A WHOLE WITHOUT THE WRITTEN PERMISSION OF <INSERT COMPANY NAME HERE> IS PROHIBITED.

		UNLESS OTHERWISE SPECIFIED:	NAME	DATE	METAPHASE TECHNOLOGIES, INC.	
		DIMENSIONS ARE IN INCHES	DRAWN	KW	4/25/2012	TITLE:
		TOLERANCES:	CHECKED			DUAL OFF AXIS RING LIGHT, 4 INCH
		FRACTIONAL ± 1/64	ENG APPR.			
		ANGULAR: MACH ± 1/2° BEND ± 2°	MFG APPR.			
		TWO PLACE DECIMAL ± .01	Q.A.			
		THREE PLACE DECIMAL ± .005	COMMENTS:			
	DOARL241	INTERPRET GEOMETRIC TOLERANCING PER:				
	DOARL221	MATERIAL				SIZE DWG. NO. REV
	DOARL202	FINISH				B DOARL221
NEXT ASSY	USED ON	APPLICATION				SCALE: 1:2 WEIGHT: SHEET 1 OF 1
		DO NOT SCALE DRAWING				