

MetaBright™ OmniLight
Model#: MB-OBL28X32



- Lightweight alloy housing comes with welded brackets for secure and easy mounting
- Large panel for even lighting (28" X 32")
- Thin profile for easier installation
- Diffused, even illumination of standard dome lights

Part #	Color	Power Supply	Specifications:	
MB-OBL28x32-W-24	White 6000 K	24 volt power supply available upon request.	Power Consumption	20VDC @ 12Amps
MB-OBL28x32-R-24	Red 630nm		Finish	Black Anodized
MB-OBL28x32-B-24	Blue 455nm		Weight	44.5lb / 20.18kg
MB-OBL28x32-G-24	Green 530nm		Operating Temperature	120° F Max
MB-OBL28x32-IRN-24	Infrared 850nm		Compliance	CE/RoHS
MB-OBL28x32-UVS-24	UltraViolet 365nm		Intensity	8 mW/cm ²
MB-OBL28x32-UVL-24	UltraViolet 395nm		Lifetime Hours	75,000 Hours

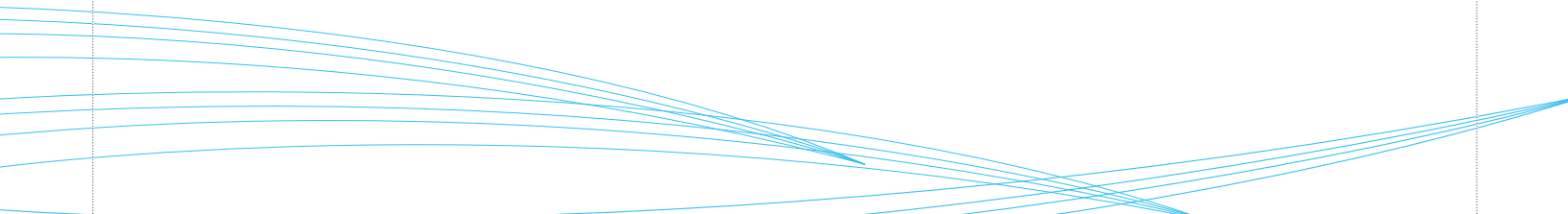
10 ft. flying leads come standard on all products.
Light features built-in constant current driver.
No expensive controller required.

Wiring Diagram

Flying Leads	Function
RED x 2	+20VDC
BLACK x 2	Ground
WHITE x 2	+20VDC
GREEN x 2	Ground

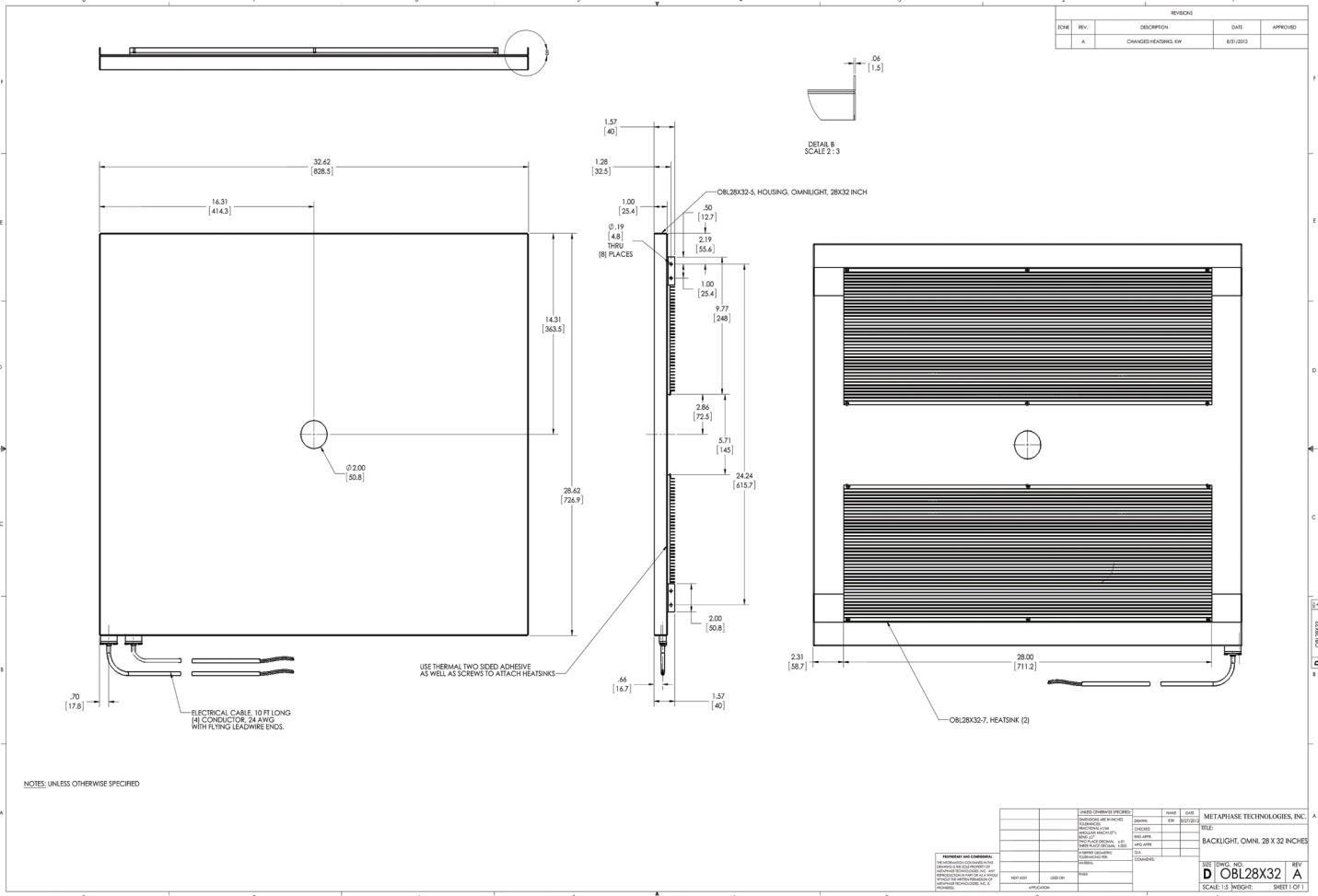
ORDERING INFORMATION:

• M B - O B L 2 8 X 3 2 - - 2 0
|
R Red 630nm



MetaBright™ OmniLight Model#: MB-OBL28X32

Drawing/Diagram



945 East 11th Avenue Tampa, FL 33605
 Phone: (813) 984-0125
 Contact: Sales@pyramidimaging.com
<https://pyramidimaging.com>

© Metaphase Technologies, Inc. WhiteStar BACKLIGHTS BACKLOGIC, OMNIGLO, OBL28X32