

# MetaBright™ Long Range Strobe

Model#: MB-WLRS605 - Wide Beam

**Metaphase**  
Technologies, Inc.

Pyramid Imaging 



- NOISE FREE STROBING (SILENT OPERATION)
- POWERFUL LED TECHNOLOGY
- LONG RANGE BEAM
- LOW MAINTENANCE
- WEATHERPROOF ENCLOSURE
- NO BALLAST OR STARTER NEEDED
- NO EMI/RFI
- NO UV EMISSIONS LENS OR DIFFUSER AGING
- ULTRA-LONG-LIFE (100,000 HOURS)

## Part # Color

MB-WLRS605-W-24	White 6000 K
MB-WLRS605-R-24	Red 630nm
MB-WLRS605-B-24	Blue 455nm
MB-WLRS605-G-24	Green 530nm
MB-WLRS605-IRN-24	Infrared 850nm

10 ft. flying leads come standard on all products.  
Light features built-in constant current driver.  
No expensive controller required.

## Specifications:

Current Consumption	2A
Input Voltage	24VDC
Trigger Input	5-24VDC
Trigger Type	TTL
Finish	Appliance White Powder Coating
Shock & Vibration	20,000 G's
Operating Temperature	-30° to 120°F (-34 to 48.8°C)
Flash Rate	Up to 60Hz

## Contact Us:

Contact your Metaphase Technologies Representative for options including: Diffuser Choice, Polarizer & Light Control Film, Specific Intensity & Uniformity, & Wavelength.

## ORDERING INFORMATION:

• M B - W L R S 6 0 5 -  - 2 4 -

**W** White 5500k  
**R** Red 630nm  
**G** Green 530nm  
**B** Blue 455 nm  
**IRL** Infrared 880nm  
**UVL** (long) 395nm  
**UVS** (short) 365nm

**\*BLANK** 10 ft. Flying Leads  
**T** M12 Quick Disconnect  
**ILD** In Line Dimmer  
**ILS** In Line Strobe (customer provide trigger info)

# MetaBright™ Long Range Strobe

Model#: MB-WLRS605 - Wide Beam

## Wiring Diagram

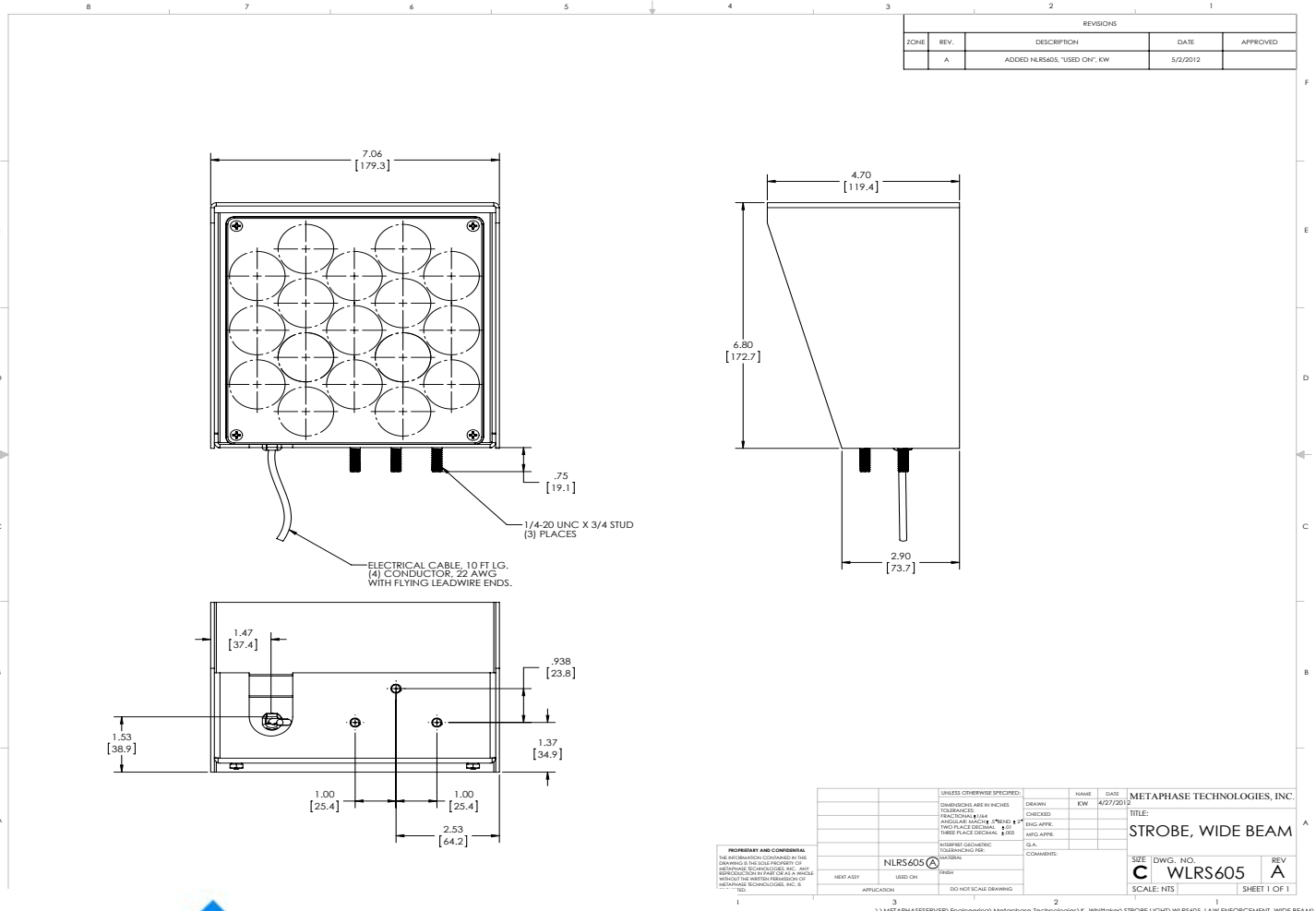
Flying Leads	Function
Blue	Trigger Input
GREEN	Trigger Ground

## Wiring Diagram

In-Line DC Jack	Function
Middle Lead	+ Positive
Side Wall	- Negative

Female RS-232 (#2 TX / #3 RX / #5 G)  
For controller configuration via PC software  
(Included)

## Drawing/Diagram



945 East 11<sup>th</sup> Avenue Tampa, FL 33605

Phone: (813) 984-0125

Contact: Sales@pyramidimaging.com

<https://pyramidimaging.com>