



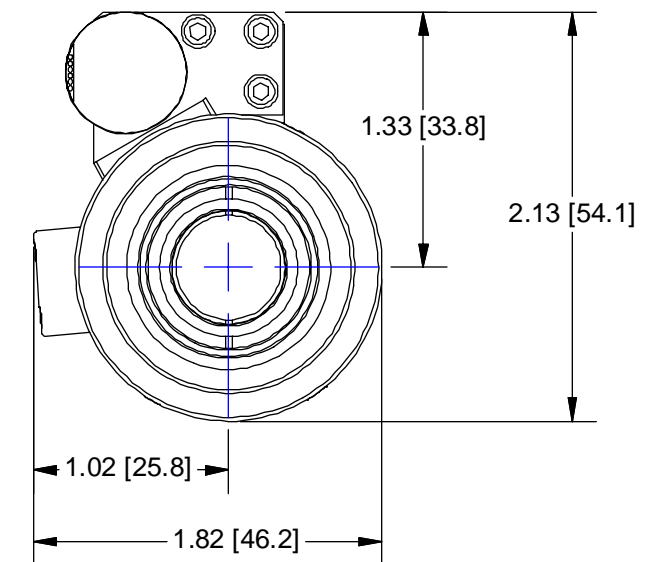
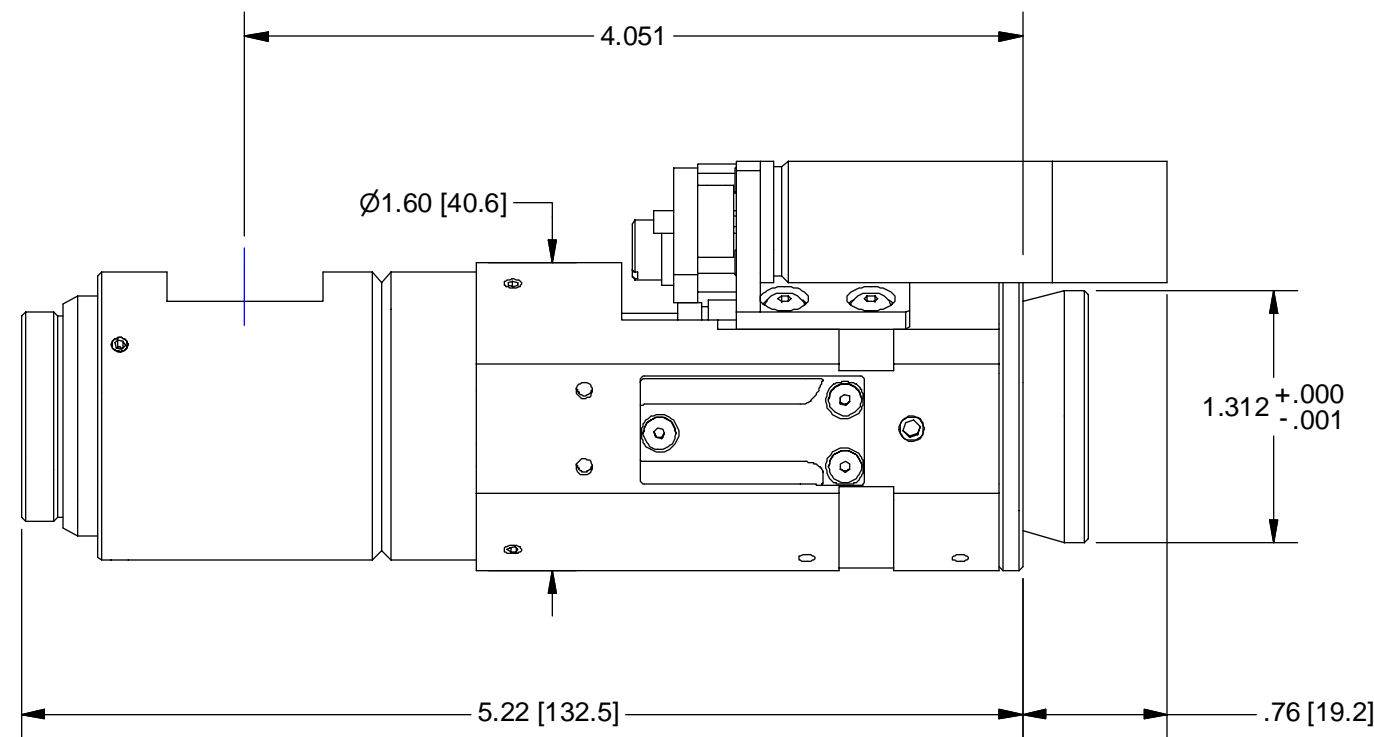
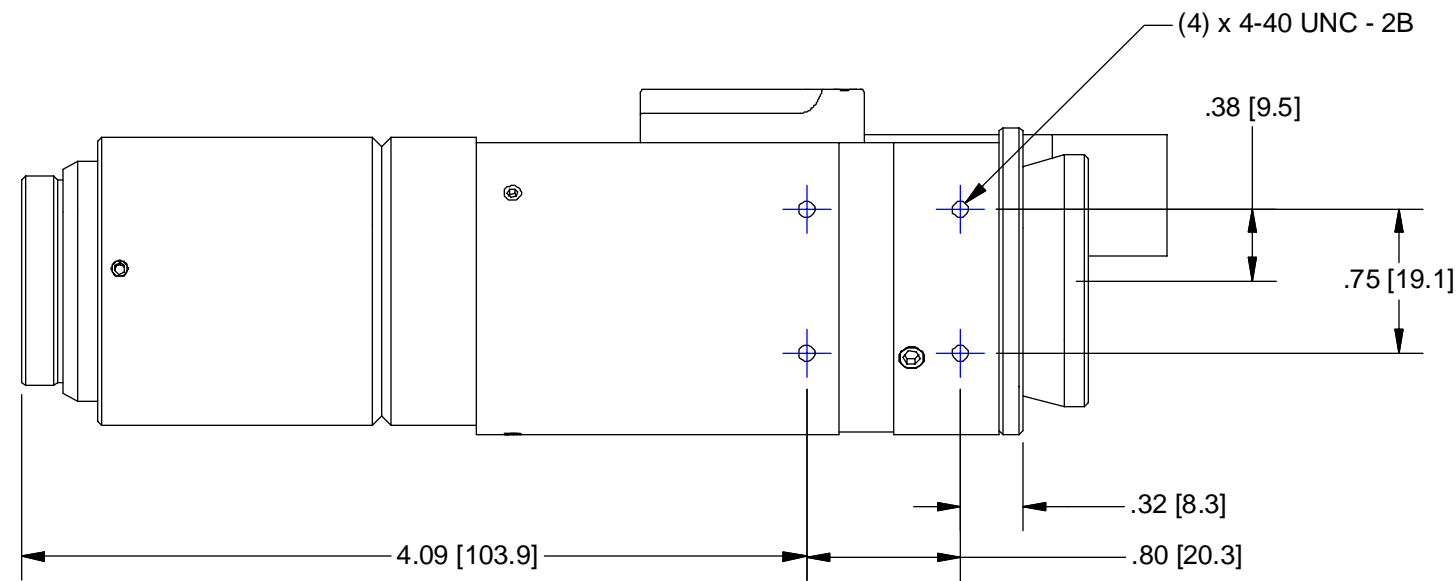
**Pyramid Imaging**

945 East 11th Avenue Tampa, FL 33605

sales@pyramidimaging.com

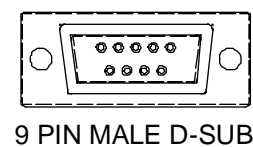
www.pyramidimaging.com

813-786-3785


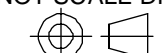


**DC ENCODED PINOUT**

- PIN 1 = MOTOR CH A
- PIN 2 = FAR LIMIT
- PIN 3 = N/C
- PIN 4 = +5Vdc
- PIN 5 = MOTOR +
- PIN 6 = MOTOR CH B
- PIN 7 = NEAR LIMIT
- PIN 8 = COMMON
- PIN 9 = MOTOR -



**OUTLINE**

|   |             |   |  |  |         |          |
|---|-------------|---|--|--|---------|----------|
| UNLESS OTHERWISE SPECIFIED DIMENSIONS ARE IN INCHES AND INCLUDE CHEMICALLY APPLIED OR PLATED FINISHES |             | THE CONTENTS OF THIS DOCUMENT ARE PROPRIETARY TO NAVITAR, ITS USE IS AUTHORIZED ONLY FOR RESPONDING TO REQUEST FOR QUOTATION OR PERFORMANCE OF WORK FOR NAVITAR |  | <br>ROCHESTER, NEW YORK |         |          |
| SCALE:  | 1:1         | 0.0 inch 1.0  |  |  |         |          |
| WEIGHT:   |             | 0.0 mm 25.0   |  | MTR (ENC) 6x w/LS (HE) & ROT. CP   |         |          |
| DR:   | R. PODLENA  | DO NOT SCALE DRAWING<br>   |  | SIZE   | 1-62609 | REV      |
| CH:   | P. BONAFEDE |   |  | <b>B</b>   |         | <b>C</b> |
| PROJECT #:  |             |   |  | SHEET 2 OF 2   |         |          |
| DATE DR:  | 8/18/2003   |   |  |  |         |          |