

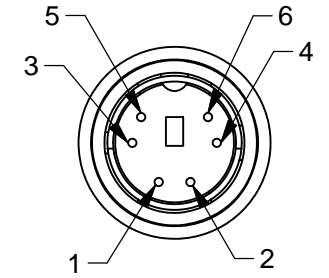
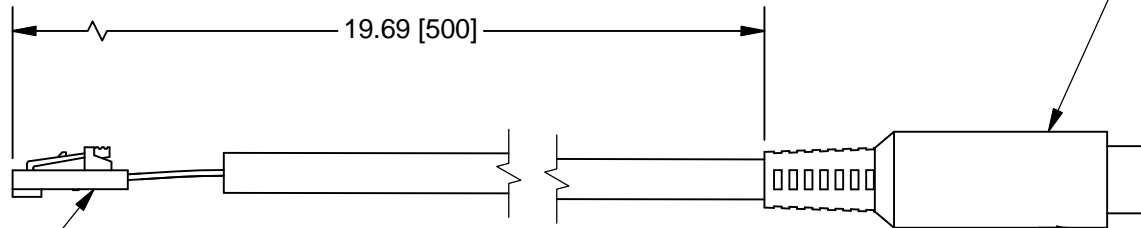
945 East 11th Avenue Tampa, FL 33605

Phone: (813) 984-0125

Contact: Sales@pyramidimaging.com

<https://pyramidimaging.com>

6 PIN MIN-DIN- MALE
 CABLES TO GO
 PN:01747
 PIN 1= ANNODE
 PIN 2 = CATHODE
 PIN 3 TIED TO PIN 5
 PIN 4 TIED TO PIN 6



MOLEX
 FEMALE CONNECTOR HOUSING
 2 POSITION
 PN: 50-57-9402

CRIMPS
 2x MOLEX: 16-02-0097

OUTLINE

UNLESS OTHERWISE SPECIFIED DIMENSIONS ARE IN INCHES [MM] AND INCLUDE CHEMICALLY APPLIED OR PLATED FINISHES		PROPRIETARY AND CONFIDENTIAL				
SCALE: 1:1		THE INFORMATION CONTAINED IN THIS DRAWING IS THE SOLE PROPERTY OF NAVITAR. ANY REPRODUCTION IN PART OR AS A WHOLE WITHOUT THE WRITTEN PERMISSION OF NAVITAR IS PROHIBITED.				
WEIGHT:	8.12 g	0.0 inch 1.0 		CABLE, LED, .5m		
DR BY:	CLB	0.0 mm 25.0 				
CH BY:	R. PODLENA					
PROJECT #:	E3119	DO NOT SCALE DRAWING		SIZE	1-40181	
DATE DR:	7/29/2013			A		
					SHEET 3 OF 3	REV A