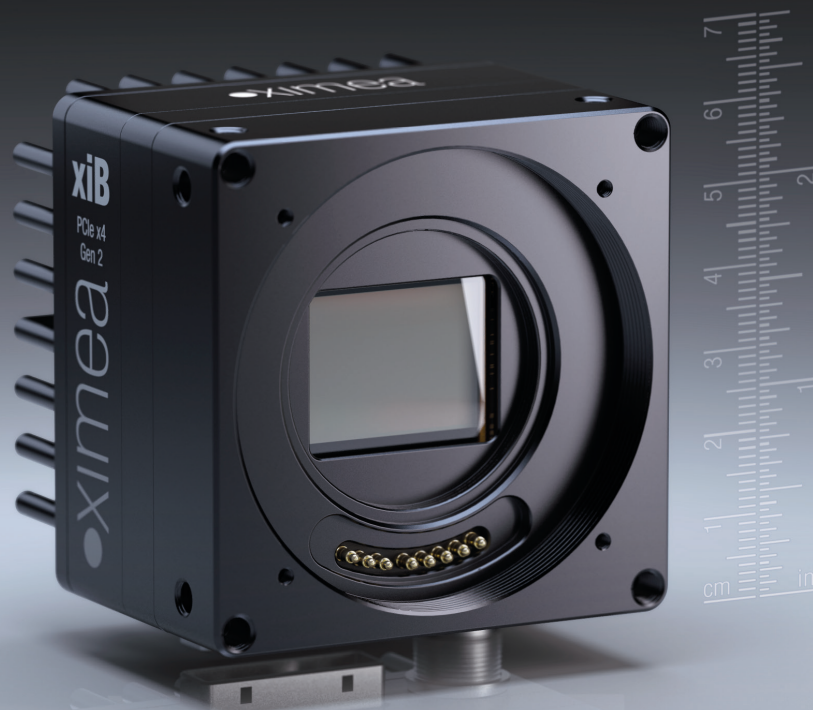


# High-speed PCIe cameras

ximea

fastest image transfer • high resolution • no frame grabber required



**xiB**

housed cameras with PCIe interface

# xiB - series camera specifications

**xiB** is a compact camera using the most recent high resolution CMOS sensors with outstanding features:

- PCIe x4 Gen2 interface for direct access to and from the computer memory with up to 20 Gbit / sec
- No frame grabber required
- Most recent high resolution CMOSIS sensors
- Robust PCIe and Power/GPIO connectors, slim design
- Integrated Canon EF lens interface for control of dynamic aperture and focus.
- Windows and Linux support with DMA (direct memory access) image data transfer
- Compact housing: 60 x 60 x 38 mm

## Sensors and models:

Model <sup>1)</sup>	Sensor	Resolution	Pixel size [um]	ADC [bits]	DR [dB]	FWC [e-]	Diagonal [mm]	Power [W]	FPS
CB120xG-CM	CMOSIS CMV12000	4096 x 3072, 12 MP	5.5	8,10,12	60	13500	28	6.5	130, 103, 86 <sup>2)</sup>
CB200xG-CM	CMOSIS CMV20000	5120 x 3840, 20 MP	6.4	12	66	15000	41	6	32

**Note 1:** various models available: x = C for color, M for monochrome. CB120RG-CM: NIR-enhanced version upon request

**Note 2:** RAW 8 bits, 10 bits and 12 bits

## Compatibility:

Standard **Windows, Linux & MacOS** operation systems • GenICam / GenTL • Single SDK/API for all XIMEA camera models.



Contact:



**Pyramid Imaging**  
4951 Adamo Dr. Suite 224  
Tampa, FL 33605-5919  
Phone: 813.984.0125 Fax: 866.874.9521  
[www.pyramidimaging.com](http://www.pyramidimaging.com)