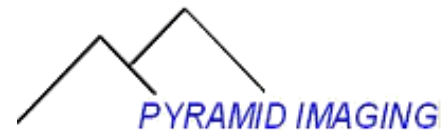


A vertical, high-contrast, yellow-tinted image showing a close-up of a mechanical component, likely a turbine or engine part. The foreground features a circular, ribbed structure, possibly a turbine wheel or a fan, with a textured, metallic surface. The background is a blurred, textured surface, possibly a metal plate or a wall, with a grid-like pattern. The overall image has a strong yellow color cast and a high-contrast, almost abstract quality.



COGNEX

VISION SOFTWARE FROM THE WORLD LEADER



VisionPro® has been set free. Now you can get the world's top vision software with its robust tool library no matter what camera or frame grabber you use—even nontraditional sources such as 3D profilers, thermal cameras and X-ray imagers. That means all applications benefit from this broad-based, industrial-grade tool set from Cognex.

- Proven in more than 700,000 installations worldwide, the VisionPro tool library spans all vision needs... from geometric object location and inspection to identification and measurement.
- Combined with flexible and powerful PC-based development, VisionPro makes it faster than ever to create and deploy solutions for the most challenging machine vision applications.
- VisionPro is fully compatible with Microsoft® Windows® 7 in five languages and also supports Microsoft 64-bit operating systems to meet the demands of larger cameras and greater pixel depth. VisionPro software's framework enables users to switch seamlessly between 32-bit and 64-bit operating systems.

Our customers get more than software when they purchase VisionPro. They get a company focused exclusively on machine vision, with the most comprehensive application experience. Add direct, high-quality worldwide service and support, and it's easy to see why Cognex is the machine vision company that industry relies on.

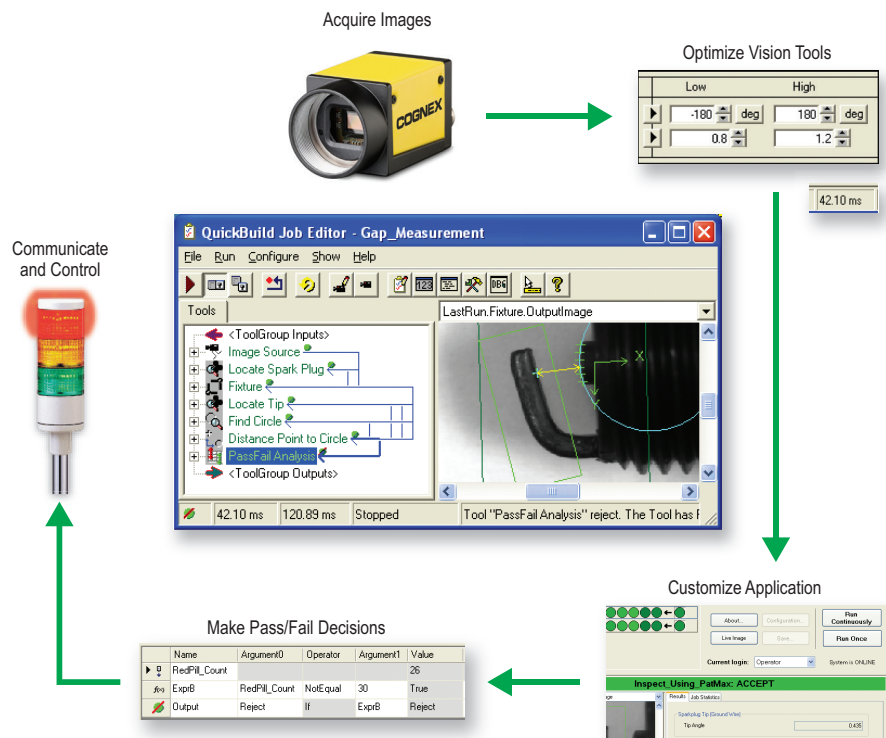
VisionPro software's capabilities set it apart:

- Drag-and-drop linking between tools enables quick communication of values, results, and images
- Intelligent software fixtures position tools dynamically, simplifying tool setup
- Reusable tool groups and user-definable tools shorten development time
- Designed to harness maximum power provided by modern multicore machines
- Supports typical Microsoft® operating systems including Windows® 7 in 32 and 64 bit

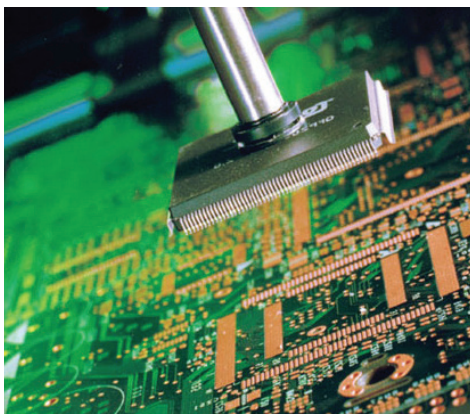
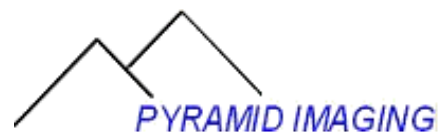
Fast and Flexible Application Development

VisionPro offers something for everyone—drag and drop, scripting, or programming—VisionPro seamlessly supports all modes of development. VisionPro QuickBuild™ lets you configure acquisition, select, and optimize vision tools, and make pass/fail decision... all without programming.

OR... develop managed applications with C++, C# or VB.NET. VisionPro has a .NET programming interface which allows programmatic access to all tools using high-level object oriented languages for very efficient development of customized vision solutions. Use QuickBuild to easily load and execute jobs or opt to manually configure your tools by code.

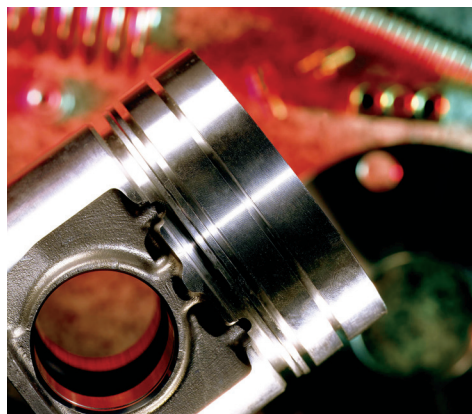


SOLUTIONS FOR ALL APPLICATIONS



Semiconductor and Electronics

- High precision alignment
- Board, wafer, and die inspection
- Metrology
- Lead frame inspection
- LED and LCD functional testing



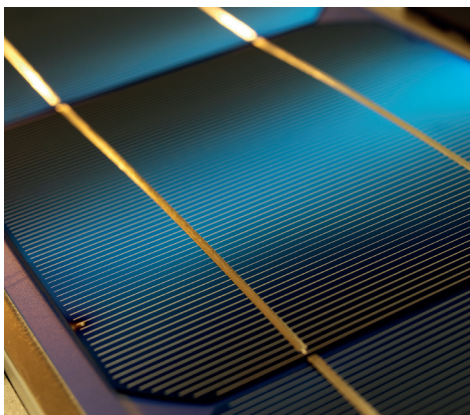
Automotive

- Robot guidance
- Part traceability
- Gauging critical dimensions
- Presence of weld nuts, springs, and fasteners
- Bead tracking for sealants
- Racking and de-racking



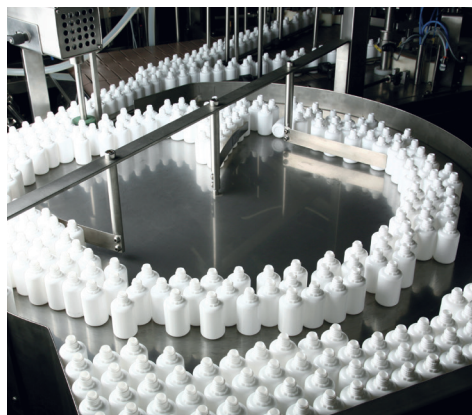
Food and Beverage

- Verify date and lot codes
- Picking and packaging
- Label inspection
- Presence of caps, labels, and tamper seals
- Whole package inspection
- Verifying bag closure



Solar

- Silicon crystal, wafer, and cell inspection
- High precision alignment
- Color cell sorting
- Coating inspection
- Panel assembly verification
- Screen print registration



Pharmaceutical

- Verify date and lot codes
- Label inspection
- Whole package inspection
- Sort by color
- Read 1-D and 2-D barcodes
- Verify presence of tamper seals



Robot Guidance and Part Location

- Part location for automated palletizing
- Locate, identify, and inspect components
- Pick & place on conveyors
- Robotic inspection
- Guide assembly