

Steady State Control, 1 Ch, 1/3A adjustable by external potentiometer

The steady state control units are designed to control all types of LATAB light heads.

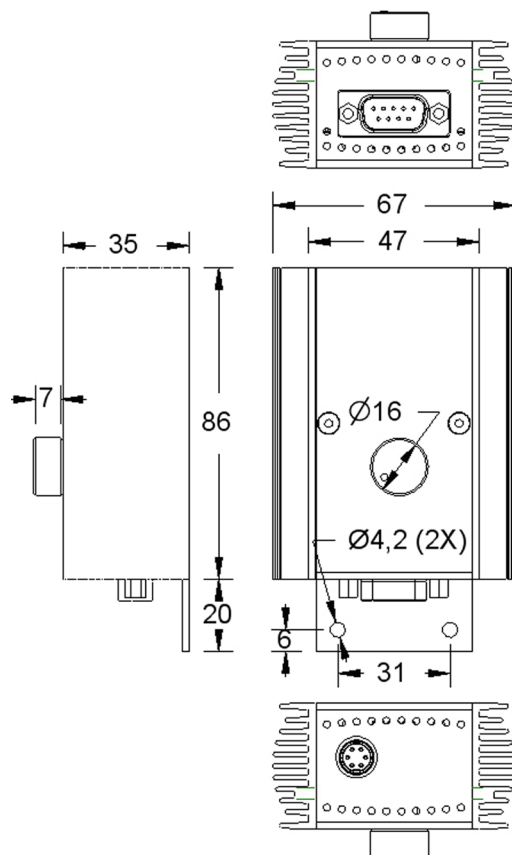
This control unit is designed for "P&P" (plug and play). Just connect the LATAB light head and the controller automatically identifies the light type with an electronic sensor.

The light intensity is controlled by an external potentiometer.

Supplied with 5 meter power cable.



Mechanical dimensions



Specifications

Supply voltage	24V DC \pm 10%, max 1A/2.5A
Power output	Max. 1A/3A
Light intensity	0-100% by external potentiometer
Operation temp.	0-65°C

Housed in black aluminium box.
CE approved and RoHS compliant.

Ordering information

Controller	Model
Steady state, adjust.by potentiometer, 1A	PAD2 2135/1
Steady state, adjust.by potentiometer, 3A	PAD2 2135/3

Option

DIN clips add "/D"