

# Line Scan Lenses for 62mm Sensor

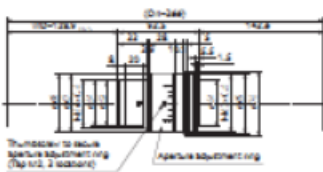
## ML-L12K5A Series

The 12K5 Series consists of high resolution models with a large format design compatible with 12,000 bit, 5 $\mu$ m pixel line sensor cameras. Utilizing the various lens barrel & mount adapters, a large number of lens variations are possible allowing flexibility. Very high light uniformity, low distortion, and high resolution are achieved by these models making them ideal for line scan and large format area scan applications.

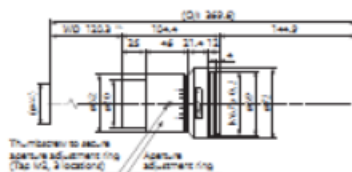


- High-resolution models compatible with 5 $\mu$ m pixel sensors
- Maximum imager size of  $\varnothing$ 61.4
- Equipped with base lens and various lens barrels making the series versatile and compatible with all types of cameras
- The barrels are equipped with camera adjustment ring

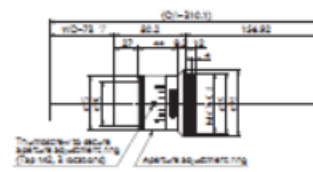
ML-L1.2-12K5A



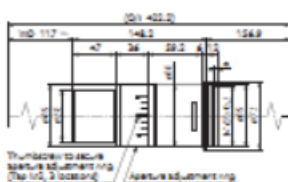
ML-L1.4-12K5A



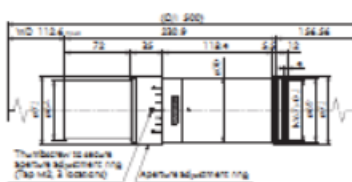
ML-L1.75-12K5A



ML-L2.4-12K5A



ML-L3.0-12K5A



### Base Lens

Model	Focal Length	Magnification	O/I	WD	Effective F No.	TV Distortion	Image Format	Mount	Weight
★ ML-L1.2-12K5A	103.5	×1.2	366mm	128.9mm	7.4 ~ 44	-0.01 or less	61.4mm	Mount Adapter 12K5	650g
ML-L1.4-12K5A	100	×1.4	369.6mm	120.3mm	6.8 ~ 35	-0.02 or less	61.4mm	Mount Adapter 12K5	450g
ML-L1.75-12K5A	101	×1.75	310.1mm	73mm	7.4 ~ 44	0.03 or less	61.4mm	Mount Adapter 12K5	450g
★ ML-L2.4-12K5A	98.5	×2.46	422.2mm	117mm	8.8 ~ 47	0.02 or less	61.4mm	Mount Adapter 12K5	900g
★ ML-L3.0-12K5A	112	×3	500mm	112.6mm	9.5 ~ 53.8	0.01 or less	61.4mm	Mount Adapter 12K5	1500g

★Made to order