

# Line Scan Lenses for 35mm Sensor

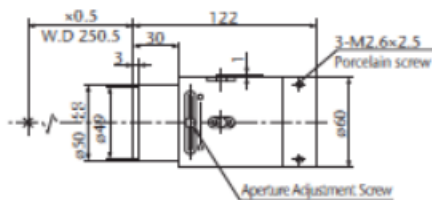
## ML-L Series

Optimal for high speed processing of large field of views, the ML-L Series was designed for line scan and area sensors up to 35 mm length and 7  $\mu$ m pixel size.

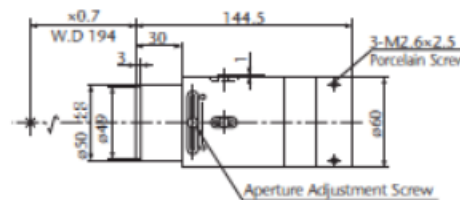


- Low optical distortion, all models less than 0.1%
- Low marginal rays difference
- High resolution, high contrast
- Suitable for long working distance applications

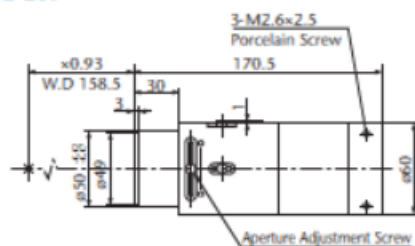
ML-L05



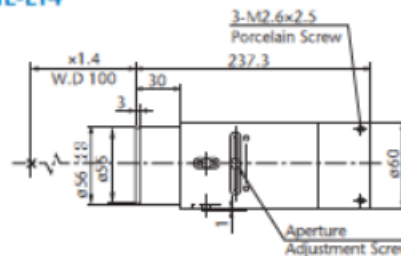
ML-L07



ML-L09



ML-L14



Model	Focal Length	Magnification	O/I	WD	Effective F No	TV Distortion	Image Format	Mount	Weight
ML-L05	102.1	$\times 0.5$	433mm	250.5mm	5.9 – 28	-0.02% or less	35mm	MountAdapter MT	700g
ML-L07	103.2	$\times 0.7$	399mm	194mm	6.7 – 32	-0.02% or less	35mm	MountAdapter MT	800g
ML-L09	104.6	$\times 0.93$	389.5mm	158.5mm	7.7 – 37	0.01% or less	35mm	MountAdapter MT	800g
ML-L14	103.3	$\times 1.4$	397.8mm	100mm	9.5 – 45	0.01% or less	35mm	MountAdapter MT	800g



945 East 11<sup>th</sup> Avenue Tampa, FL 33605

Phone: (813) 984-0125

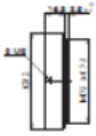
Contact: Sales@ pyramidimaging.com

<https://pyramidimaging.com>

## Camera Adapters (Optional)

### For ML-F90C/F80C

CA-V74M72-31.8



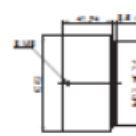
CA-V74M72-19.55



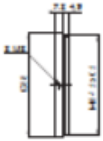
CA-V74M72-12.0



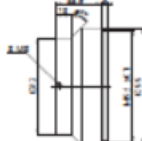
CA-V74M72-6.56



CA-V74M84.5-41



CA-V74M95-9.4



CA-M74FMT

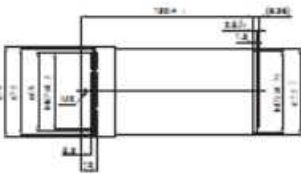


Model	★CA-V74M72-31.8	★CA-V74M72-19.55	★CA-V74M72-12.0	★CA-V74M72-6.56	★CA-V74M84.5-41	★CA-V74M95-9.4	★CA-V74FMT
Camera Mount	M72	M72	M72	M72	M84.5	M95	F
Flange back (mm)	31.8	19.55	12	6.56	41	9.4	46.5

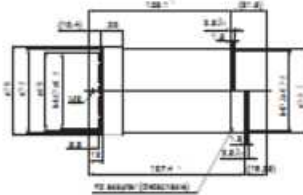
★Made to order

### For ML-L12K5A

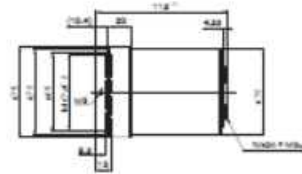
12K5-M72-6.56



12K5-M72-31.8/19.55



12K5-FMT



Model	★ 12K5-M72-6.56	★ 12K5-M72-31.8/19.55	★ 12K5-FMT
Camera Mount	M72	M72	F
Flange back (mm)	6.56	19.55	46.5

★Made to order



945 East 11<sup>th</sup> Avenue Tampa, FL 33605

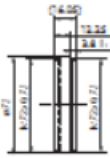
Phone: (813) 984-0125

Contact: Sales@pyramidimaging.com

<https://pyramidimaging.com>

## For ML-L00502

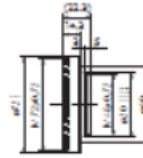
L00502-M72-19.55



L00502-M72-6.56



L00502-TFL2

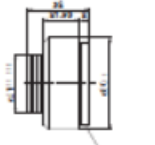


Model	★ L00502-M72-19.55	★ L00502-M72-6.56	★ L00502-TFL2
Camera Mount	M72	M72	TFL
Flange back (mm)	19.55	6.56	17.5

★Made to order

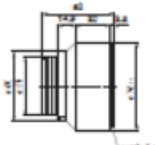
## For ML-L02035/03505

P2MT-S



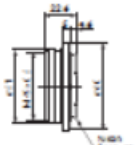
DALSA Piranha 2 Mount

P3MT-S



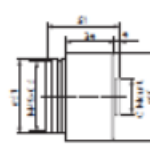
DALSA Piranha 3 Mount

FMT-S



Nikon F Mount

CMT-S



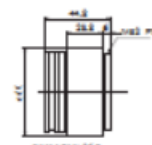
C Mount

Model	★ P2MT-S	★ P3MT-S	★ FMT-S	★ CMT-S
Camera Mount	M72	M72	F	C
Flange back (mm)	19.55	6.56	46.5	17.526

★Made to order

## For ML-L Series

MMT



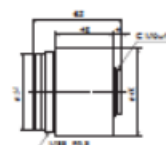
NED Compatible Mount

FMT



Nikon Mount

CMT



C Mount

Model	★ MMT	★ FMT	★ CMT
Camera Mount	M52	F	C
Flange back (mm)	36.7	46.5	17.526

★Made to order



945 East 11<sup>th</sup> Avenue Tampa, FL 33605

Phone: (813) 984-0125

Contact: Sales@pyramidimaging.com

<https://pyramidimaging.com>