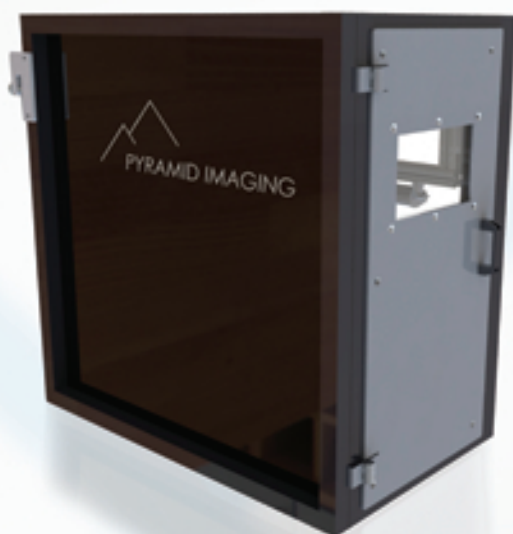




# WebSpection

Vision Inspection Systems



## Features at a Glance

- Capable of performing up to **32** different inspection tasks per cycle
- Modular design
- Touchscreen HMI and CPU in one
- Acommodates existing conveyor systems
- PLC automated
- Marking system included
- Matrix code identifications
- Barcode identification
- Counting inspection tasks
- Gauging tasks
- Part location tasks
- Feature comparisons

## Fields of Applications

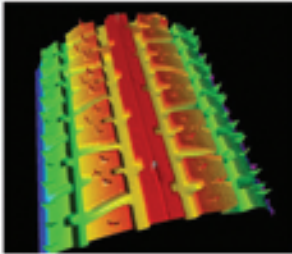
- Food & Beverage
- Pharmaceutical
- Consumer Products
- Medical
- Automotive
- Aerospace
- Glass
- Electronics
- Granite
- Packaging





## Capabilities in Detail

### 3D Inspection



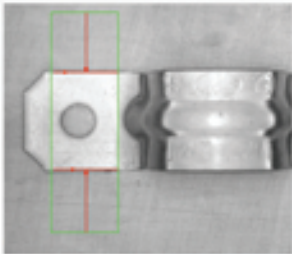
3D Inspection tasks can be implemented in your WebSpection® system due to its modular design and flexible software.

### Code Reading



WebSpection® can read different codes, for instance: DMC, QR, pharma and bar codes such as EAN 13, EAN 8, Code 39, 2/5, Interleaved, etc.

### Metrology



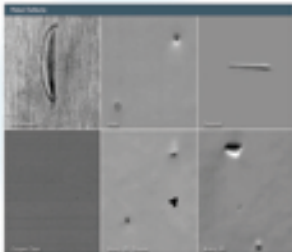
WebSpection® has the capability of measuring straight lines, circles, ranges, angles, etc. The software that controls WebSpection® provides contour tracking with high measuring accuracy and speed.

### OCR/OCV Reading



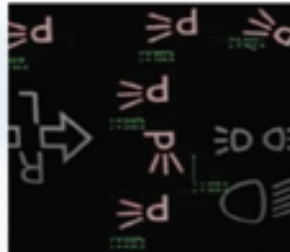
WebSpection® reads and classifies different fonts. WebSpection® has high recognition rates without additional teach-in and has already pre-trained classification.

### Surface Inspection



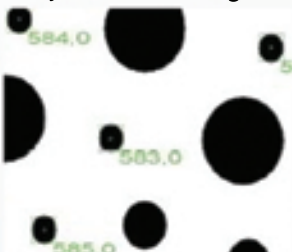
WebSpection® recognizes surface faults such as holes, scratches, folds, spots and other contamination, as well as dents, pores and inclusions.

### Pattern Matching



WebSpection® come with a software capable of recognizing objects in any position and rotation, after a short teach-in.

### Object Counting (BLOB)



WebSpection® can count objects within only a few milliseconds. The only required command is the, so called, BLOB (Binary Large Object).

### Color Inspection



WebSpection® evaluates color, intensity, and light, information e.g. LEDs and displays on printed circuit boards or other colored objects.

