

**Telecentric**



945 East 11<sup>th</sup> Avenue Tampa, FL 33605

Phone: (813) 984-0125

Contact: Sales@ pyramidimaging.com

<https://pyramidimaging.com>

# APT **Economical** SERIES

---

The optimal combination of quality, design, and price.

---



ø16 Telecentric Lens Series

# High quality cost effective telecentric lenses



## Features

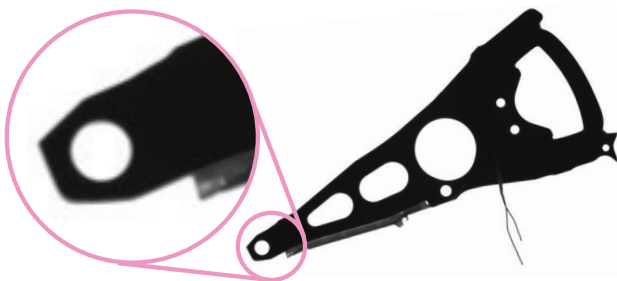
The APT series provides you with a cost effective way to make accurate measurements, larger Depth of Field, and a Zero Angular Field of View which eliminates perspective error that you typically get with a non-telecentric lens. Coaxial models are also available.

Model	Magnification	WD(mm)	Working F/#	Max Sensor
APT08-65(C)	0.8	66.0	9.6	1/1.8"
APT1-65(C)	1	65.9	12.1	1/1.8"
APT1.5-65(C)	1.5	68.9	25	1/1.8"
APT2-65(C)	2	65.4	25	1/1.8"
APT4-65(C)	4	64.5	28.9	2/3"
APT08-120(C)	0.8	121.9	17.5	1/2"
APT1-110(C)	1	113.0	21.9	1/1.8"
APT1.5-110(C)	1.5	115.0	18.7	1/1.8"
APT2-110(C)	2	110.5	24.9	1/1.8"

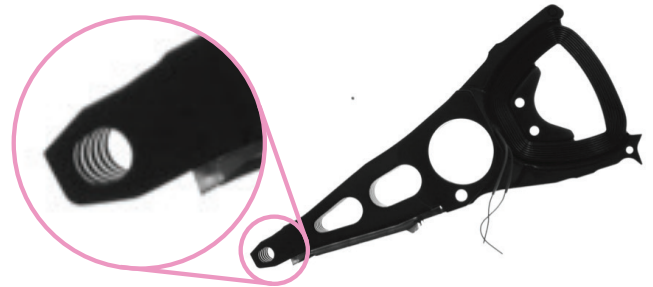
## Image Comparison

Telecentric lenses allow you to capture the entire top surface of an object while ignoring the sides of it. It is truly a top down view.

### Telecentric Image

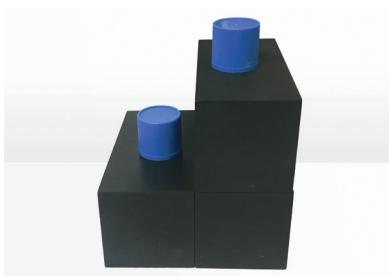


### Non-Telecentric Image

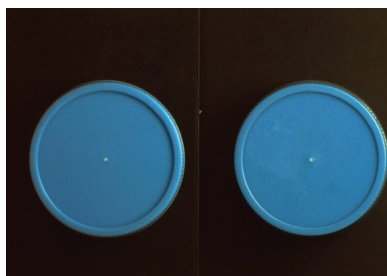


Even when the WD changes, a telecentric lens will display the accurate size of an object, while due to distortion, a non-telecentric lens will alter the true size of an object.

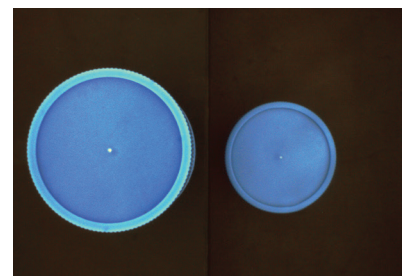
### Object



### Telecentric Image



### Non-Telecentric Image



Coaxial illumination is another advantageous feature of a telecentric lens. It helps illuminate unevenness and scratches on the surface of any flat object you are viewing, as well as make it easier to make dimensional measurements.