

# L7 Series

apg

Allison Park Group, Inc.



The L7 Series enclosure is a 316 stainless steel housing for your upright camera, laser, or sensor. Designed to work in highly corrosive environments, it also is designed to work in food applications, with care taken to reduce pockets where water might sit.

## Product Features

- Constructed with food safe materials
- Captive fasteners
- Adjustable to handle long or wide angle lenses
- Optional IP69K

## Construction

- 316 stainless steel body and fasteners
- Tumbled polish finish

## Environment

- NEMA 6/IP68

## Accessories

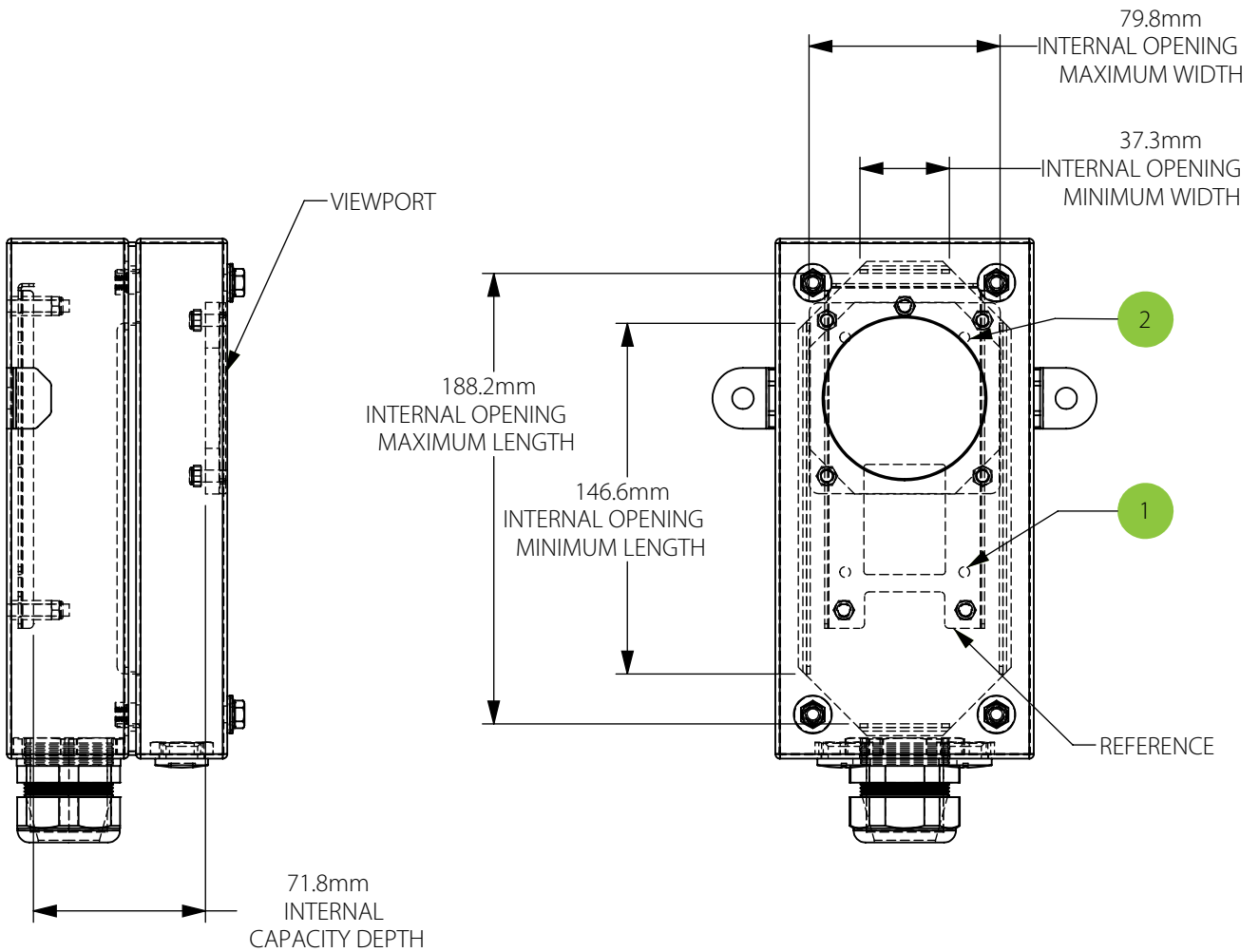
- Air cooling/Air curtain
- Insulation
- Shutter assembly
- Heat shield
- 40mm fan mount
- Vortex tube cooler adapter
- Thermostat
- Heater



## Camera and Lens Size Viewing Window

Camera Specific Models	Camera Mounting	Viewport	Viewing Area	Cable Entry
Model L7-AA Length: 252mm Net weight: 2.6 kg (5.8 lbs), Gross weight: 2.3 kg (5 lbs)	Cognex 5000	Abrasion resistant optical grade acrylic	68mm Dia.	PG29 Split cable gland
Model L7-AB Length: 252mm Net weight: 2.3 kg (4.9 lbs), Gross weight: 2.3 kg (5 lbs)	Cognex 5000	Abrasion resistant optical grade acrylic	68mm Dia.	PG29 Split cable gland
Model L7-AQ Length: 252mm	Sick I40	Abrasion resistant optical grade acrylic	68mm Dia.	PG29 Split cable gland
Model L7-AR Length: 252mm Net weight: 2.3 kg (4.9 lbs), Gross weight: 2.3 kg (5 lbs)	Keyence LK-H057	Soda Lime glass	68mm Dia.	PG29 Split cable gland
Model L7-AS Length: 252mm Net weight: 2.3 kg (4.9 lbs), Gross weight: 2.3 kg (5 lbs)	Keyence LK-G400	Abrasion resistant optical grade acrylic	68mm Dia.	PG29 Split cable gland
Model L7-AU Length: 252mm	Keyence LK-H157	Abrasion resistant optical grade acrylic	68mm Dia.	PG29 Split cable gland
Model L7-AX Length: 252mm Net weight: 2.6 kg (5.8 lbs), Gross weight: 2.3 kg (5 lbs)	Cognex IS7000	Abrasion resistant optical grade acrylic	68mm Dia.	PG29 Split cable gland
Model L7-BA Length: 252mm Net weight: 3.1 kg (6.9 lbs), Gross weight: 3.6 kg (8 lbs)	Cognex 5000	Abrasion resistant optical grade acrylic	68mm Dia.	PG29 Split cable gland
Model L7-BB Length: 252mm Net weight: 2.8 kg (6.1 lbs), Gross weight: 3.1 kg (7 lbs)	Cognex 5000	Abrasion resistant optical grade acrylic	68mm Dia.	PG29 Split cable gland
Model L7-BD Length: 252mm	Insight 7000	Abrasion resistant optical grade acrylic	68mm Dia.	PG29 Split cable gland
Model L7-BR Length: 252mm Net weight: 2.6 kg (5.8 lbs), Gross weight: 2.3 kg (5 lbs)	Insight 7000 G2	Abrasion resistant optical grade acrylic	68mm Dia.	PG29 Split cable gland
Model L7-CC Length: 252mm Net weight: 3.1 kg (6.9 lbs), Gross weight: 3.6 kg (8 lbs)	Datalogic Matrix 410	Abrasion resistant optical grade acrylic	68mm Dia.	PG29 Split cable gland
Model L7-DC Length: 252mm Net weight: 3.1 kg (6.9 lbs), Gross weight: 3.6 kg (8 lbs)	Cognex 5000	Abrasion resistant optical grade acrylic	68mm Dia.	PG29 Split cable gland
Model L7-DF Length: 252mm Net weight: 3.1 kg (6.9 lbs), Gross weight: 3.6 kg (8 lbs)	Keyence SR1000	Abrasion resistant optical grade acrylic	68mm Dia.	PG29 Split cable gland
Model L7-DO Length: 252mm Net weight: 3.1 kg (6.9 lbs), Gross weight: 3.6 kg (8 lbs)	Cognex 7802	Abrasion resistant optical grade acrylic	68mm Dia.	PG29 Split cable gland

# L7 Series



Item Number	Fastener Size, metric	Hole Spacing Across Width, mm	Distance from Reference, mm
1	M4	49.78	23.5
2	M4	49.78	121.5



945 East 11th Avenue  
Tampa, FL 33605  
Phone: (813) 984-0125  
Contact: [Sales@pyramidimaging.com](mailto:Sales@pyramidimaging.com)  
<https://pyramidimaging.com>