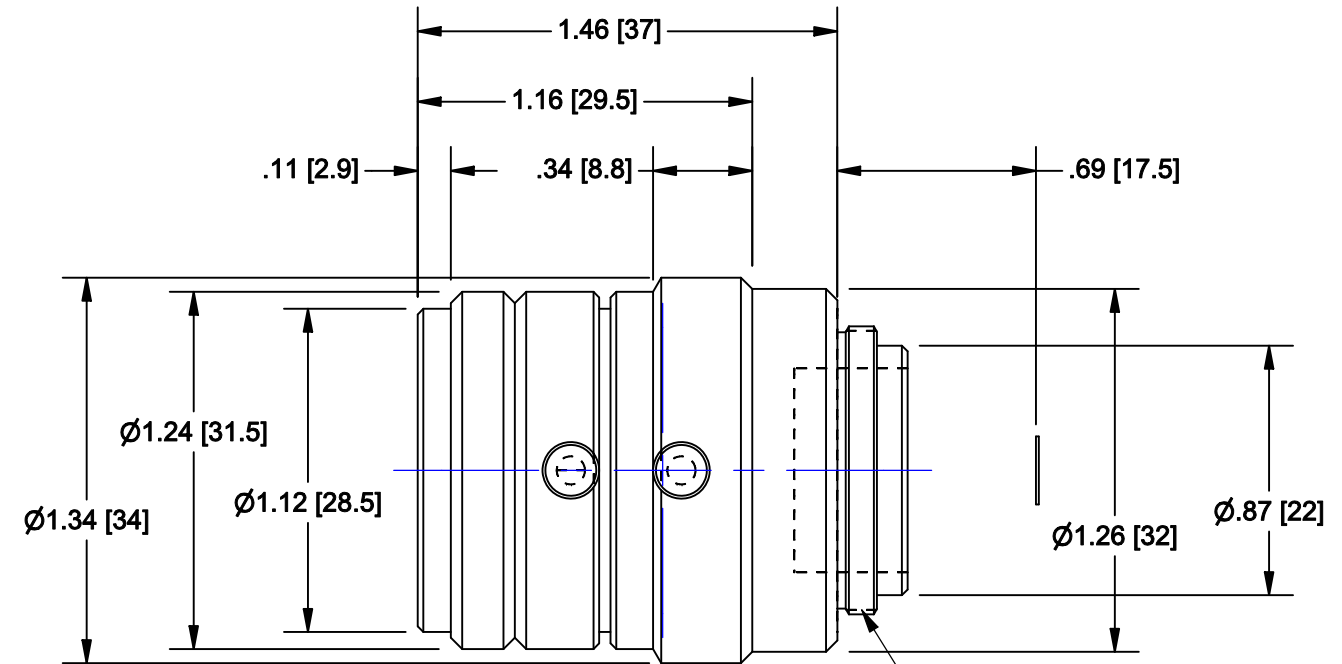
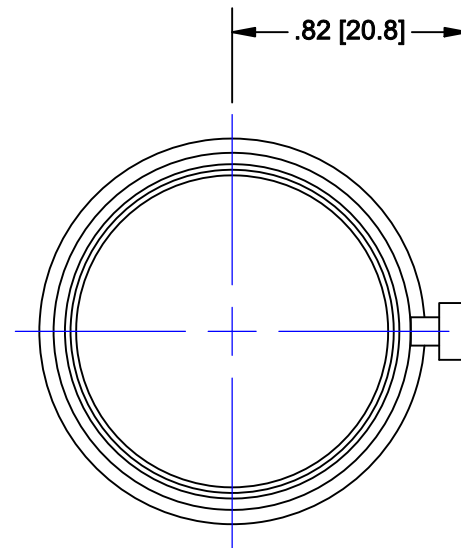
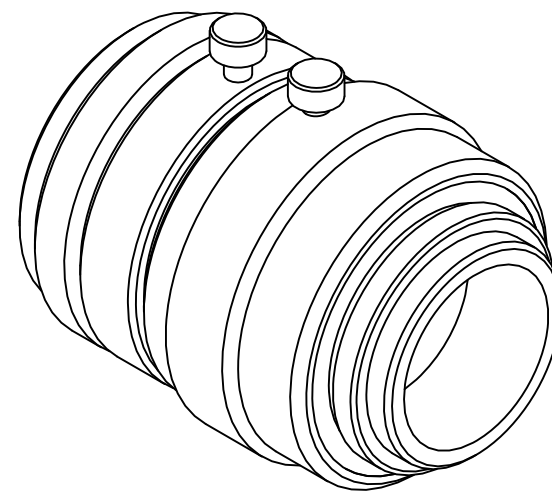


Pyramid Imaging

945 East 11th Avenue
 Tampa, FL 33605
 sales@pyramidimaging.com
 www.pyramidimaging.com
 813-786-3785



1-32 UN - 2A
 FOR C-MOUNT
 CAMERA



Lens specification - NMV - 12M23			
Specification	Value	1/2"	1/3"
Focal length	f =12mm		
Max. diameter (Ratio)	F = 1:1.4 ~ 16		
Picture Size	6.6 x 8.8mm	4.8 x 6.4	4.8 x 3.6
Angle Vertical	26.2 deg.	21.4 deg.	16.1 deg.
Horizontal	38.3deg.	28.3 deg.	21.4 deg.
Diagonal	46.8 deg.	35.0 deg.	26.6 deg.
Distortion (TV)	-0.07%	-0.05%	-0.04%
Working Dist. - 500mm	0.025x		
Optical Mag. 400mm	0.031x		
300mm	0.041x		
200mm	0.061x		
100mm	0.080x		
Minimum Focus Distance	0.15m		
Flange Back	17.526mm in air		
Back focus	11.7mm in air		
Filter Screw Size	m27.0 X 0.5		
Effective Diameter - Front	15.8mm dia.		
Rear	14.1mm dia.		
Mount	C - Mount		
Exit Pupil	- 215mm		
Temperature Range	-10 ~ +45 deg. C		
Strong Temperature Range	-40 ~ +60 deg. C		
Resolution - Center	100 Line/mm		
Corner	100 Line/mm		
Weight	75g		

UNLESS OTHERWISE SPECIFIED DIMENSIONS ARE IN INCHES AND INCLUDE CHEMICALLY APPLIED OR PLATED FINISHES

SCALE: 2:1

WEIGHT: See Table

DR: BE

CH:

PROJECT #: E2338

DATE DR: 7/11/2007

THE CONTENTS OF THIS DOCUMENT ARE PROPRIETARY TO NAVITAR. ITS USE IS AUTHORIZED ONLY FOR RESPONDING TO REQUEST FOR QUOTATION OR PERFORMANCE OF WORK FOR NAVITAR

0.0 inch 1.0

0.0 mm 25.0

DO NOT SCALE DRAWING

NAVITAR
 ROCHESTER, NEW YORK

LENS, 12mm FL, f/1.4, 2/3" MEGAPIXEL

SIZE	NMV - 12M23	REV
B		A

SHEET 1 OF 1