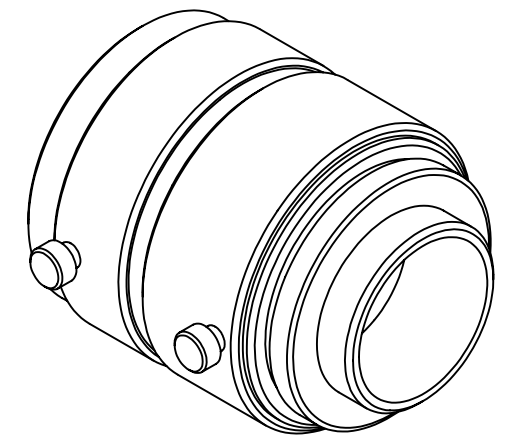
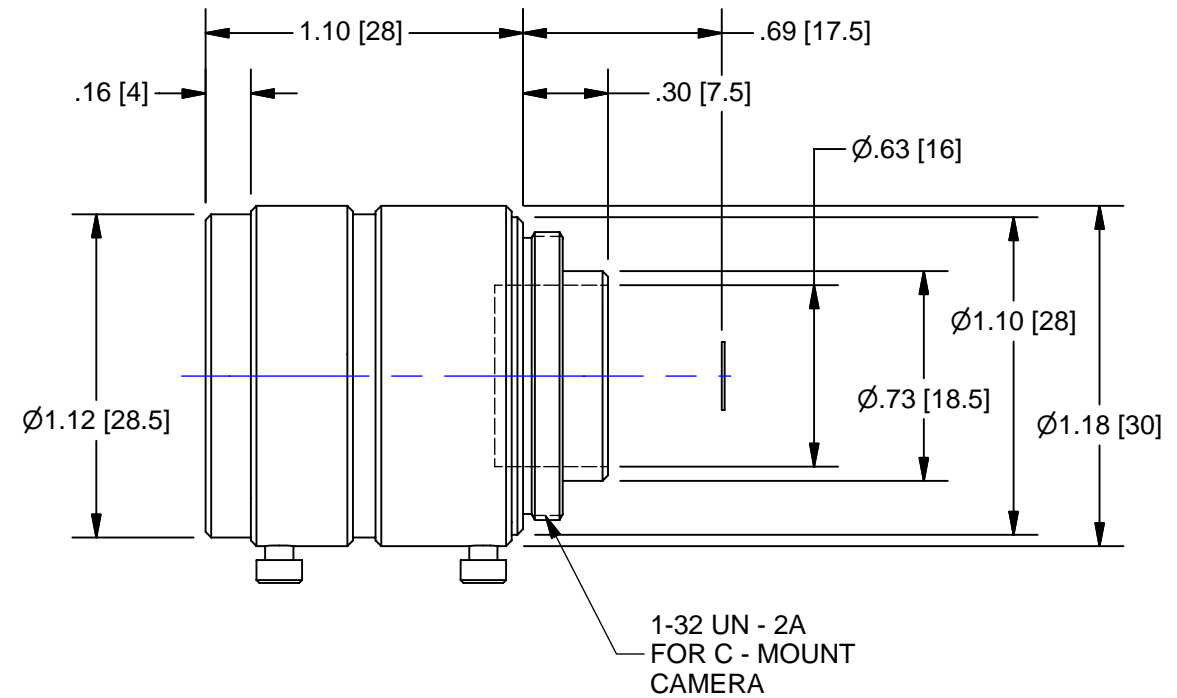
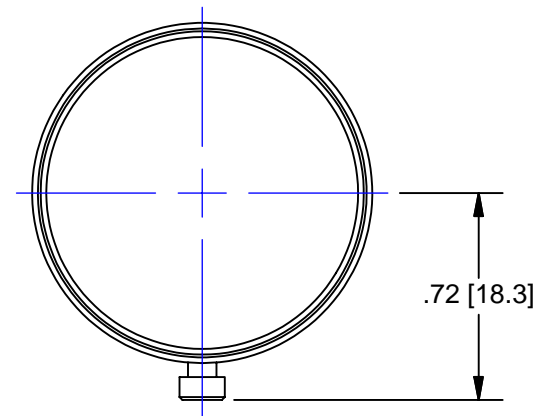




945 East 11th Avenue
 Tampa, FL 33605
 sales@pyramidimaging.com
 www.pyramidimaging.com
 813-786-3785



OUTLINE

Lens Specifications - NMV - 16			
Specifications	Value	1/2"	1/3"
Focal Length	f = 16mm		
Maximum diameter (Ratio)	F = 1.4:1 ~ 16 ~ Close		
Element	6gp. 6 Element		
Picture Size	6.6 x 8.8mm	4.8 x 6.4mm	3.6 x 4.8 mm
Angle - Vertical	22.8 deg.	16.6 deg.	12.4 deg.
Horizontal	30.5 deg.	22.2 deg.	16.6 deg.
Diagonal	38.3 deg.	27.7 deg.	20.8 deg.
Distortion	-10.7%	-5.0%	-2.7%
Shooting Range - Vertical	82.6mm	59.6mm	44.5mm
At Minimum - Horizontal	118.8mm	80.1mm	59.6mm
Focus Distance - Diagonal	142.5mm	101.1mm	74.9mm
Minimum Focus Distance	0.2m		
Flange Back	17.526mm in air		
Back Focus	12.15mm in air		
Filter Screw Size	M27.0 X 0.5		
Effective Diameter - Front	12.0mm dia.		
- Rear	12.8mm dia.		
Mount	C-Mount		
Exit Pupil	-48.9mm dia.		
Temperature Range	- 10 ~ + 45 deg. C		
Strong Temperature Range	- 40 ~ + 60 deg. C		
Resolution - Center	100 Line/mm		
- Corner	40 Line/mm		

UNLESS OTHERWISE SPECIFIED DIMENSIONS ARE IN INCHES AND INCLUDE CHEMICALLY APPLIED OR PLATED FINISHES	THE CONTENTS OF THIS DOCUMENT ARE PROPRIETARY TO NAVITAR, ITS USE IS AUTHORIZED ONLY FOR RESPONDING TO REQUEST FOR QUOTATION OR PERFORMANCE OF WORK FOR NAVITAR		
	SCALE: 1.5:1		
DR: BE	CH:	LENS, 16.0mm FL, , 2/3", f/1.4 SIZE B	
PROJECT #: E2338	DATE DR: 7/13/2007		
0.0 inch 1.0 0.0 mm 25.0 DO NOT SCALE DRAWING		REV A	