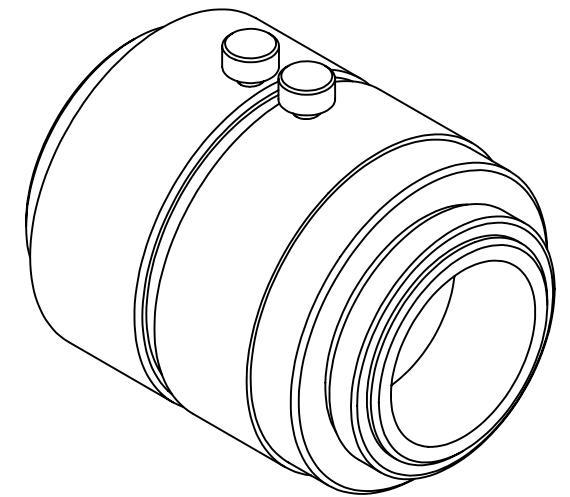
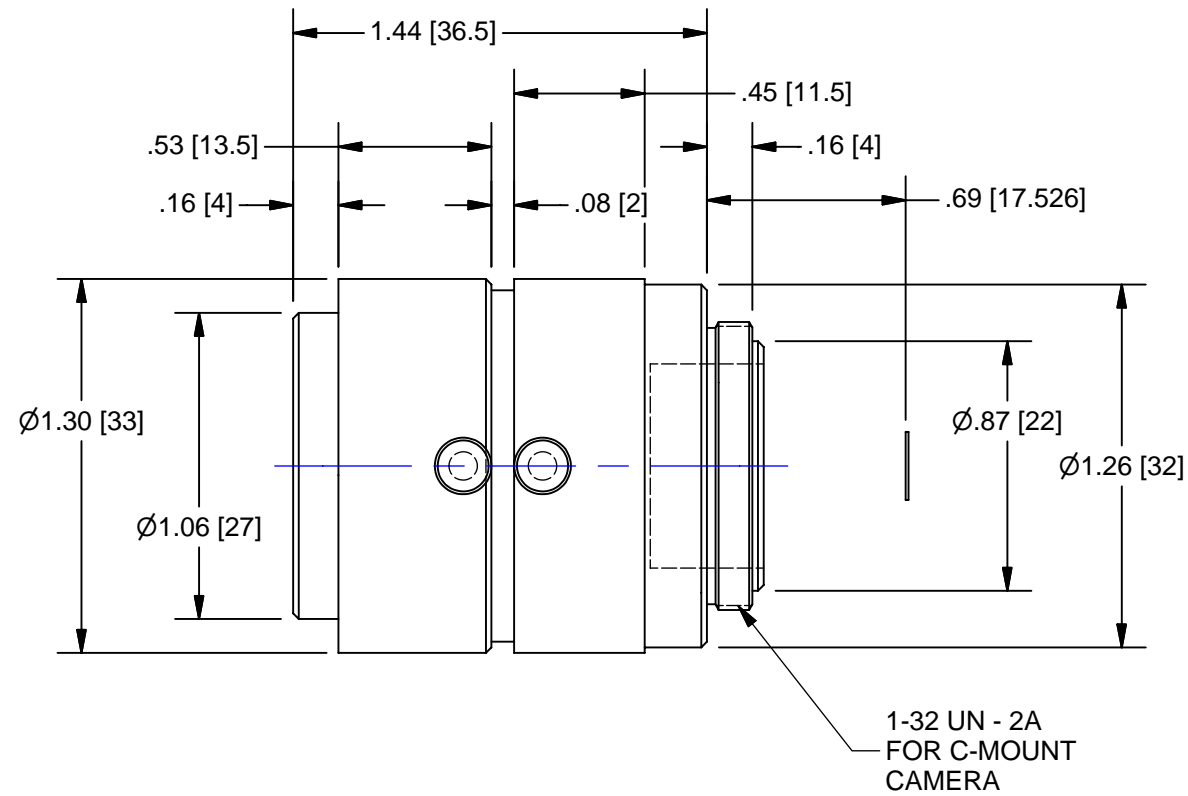
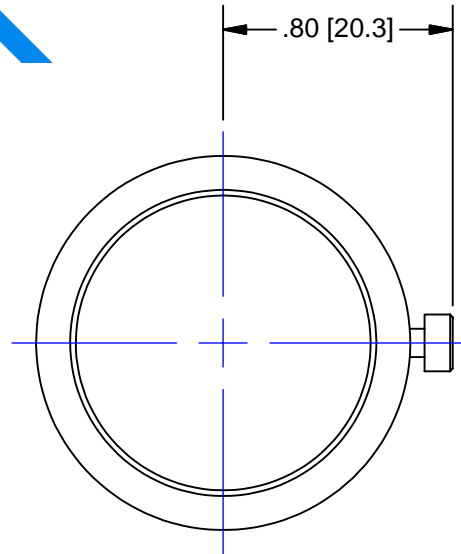


Pyramid Imaging

945 East 11th Avenue
 Tampa, FL 33605
 sales@pyramidimaging.com
 www.pyramidimaging.com
 813-786-3785



OUTLINE

Lens Specification - NMV - 16M23				
Specification		Value	1/2"	1/3"
Focal Length		f = 16mm		
Max. Diameter (Ratio)		F = 1:1.4 ~ 16		
Element		7 Group 8 Elements		
Picture Size		6.6 x 8.8mm	4.8 x 6.4mm	4.8 x 3.6mm
Angle	Vertical	22.7 deg.	16.4 deg.	12.3 deg.
	Horizontal	30.0 deg.	21.8 deg.	16.4 deg.
	Diagonal	37.0 deg.	27.0 deg.	20.4 deg.
Distortion (TV)		- 0.05%	-	
Shooting Range at	Vertical	84.4mm	61.2mm	45.9mm
	Horizontal	112.8mm	81.8mm	61.2mm
	Diagonal	141.2mm	102.5mm	76.7mm
Minimum Focus Distance		0.2m		
Flange Back Focus		17.526mm in air		
Back Focus		13.1mm in air		
Filter Screw Size		M25.5 x 0.5		
Effective Diameter	Front	20.2mm		
	Rear	15.5mm		
Mount		C-Mount		
Exit Pupil		340mm		
Temperature Range		-10 ~ +45 deg. C		
Strong Temperature Range		-40 ~ +60 deg. C		
Resolution	Center	100 Line/mm		
	Corner	80 Line/mm		
Weight		81g		

UNLESS OTHERWISE SPECIFIED DIMENSIONS ARE IN INCHES AND INCLUDE CHEMICALLY APPLIED OR PLATED FINISHES	
SCALE:	1.5:1
WEIGHT:	See Table
DR:	BE
CH:	
PROJECT #:	E2338
DATE DR:	7/11/2007

THE CONTENTS OF THIS DOCUMENT ARE PROPRIETARY TO NAVITAR, ITS USE IS AUTHORIZED ONLY FOR RESPONDING TO REQUEST FOR QUOTATION OR PERFORMANCE OF WORK FOR NAVITAR

0.0 inch 1.0
 0.0 mm 25.0

DO NOT SCALE DRAWING

NAVITAR
 ROCHESTER, NEW YORK

LENS, 16mm FL, f/1.4, 2/3" MEGAPIXEL

SIZE	NMV - 16M23	REV
B		A

SHEET 1 OF 1