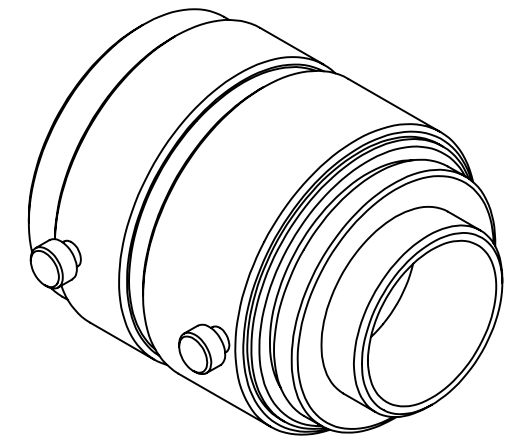
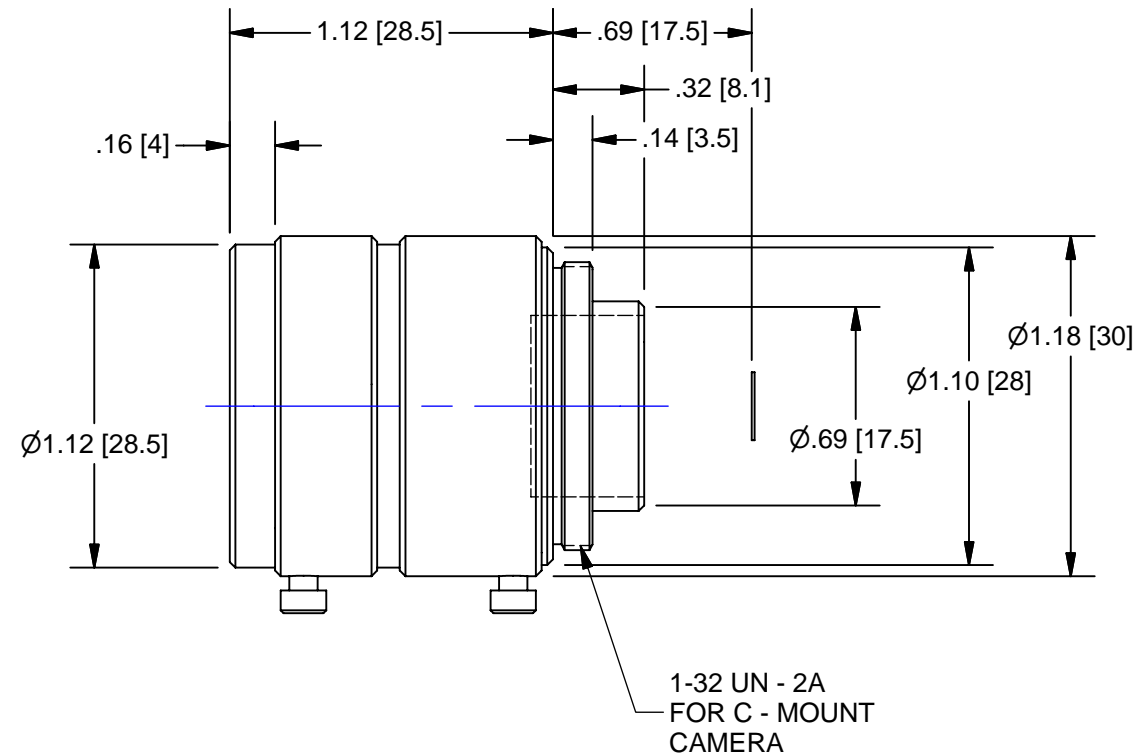
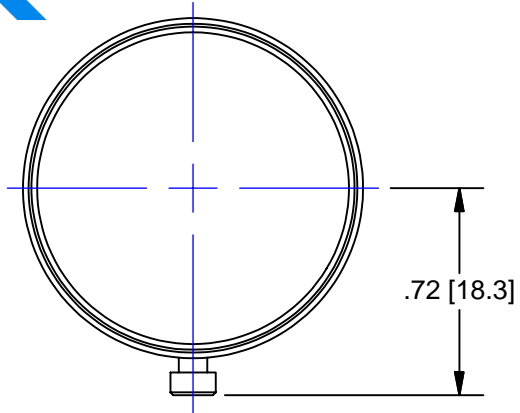




Pyramid Imaging

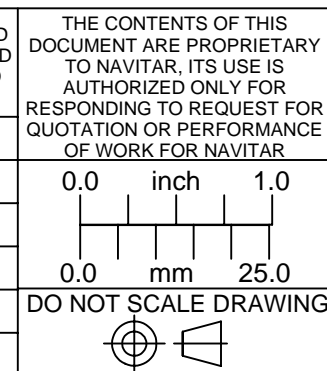
945 East 11th Avenue
 Tampa, FL 33605
 sales@pyramidimaging.com
 www.pyramidimaging.com
 813-786-3785



OUTLINE

Lens Specifications - NMV - 25			
Specifications	Value	1/2"	1/3"
Focal Length	f = 25mm		
Maximum diameter (Ratio)	F = 1.4:1 ~ 16 ~ Close		
Element	5gp. 5 Element		
Picture Size	6.6 x 8.8mm	4.8 x 6.4mm	3.6 x 4.8 mm
Angle - Vertical	15.7 deg.	11.4 deg.	8.6 deg.
Horizontal	21.0 deg.	15.3 deg.	11.5 deg.
Diagonal	26.3 deg.	19.1 deg.	14.3 deg.
Distortion	-0.6%	-0.2%	-0.1%
Shooting Range - Vertical	275mm	199.0mm	149.1mm
At Minimum - Horizontal	368mm	266.0mm	199.0mm
Focus Distance - Diagonal	465mm	334.0mm	249.2mm
Minimum Focus Distance	0.2m		
Flange Back	17.526mm in air		
Back Focus	10.32mm in air		
Filter Screw Size	M27.0 X 0.5		
Effective Diameter - Front	14.6mm dia.		
- Rear	10.7mm dia.		
Mount	C-Mount		
Exit Pupil	-26.2mm dia.		
Temperature Range	- 10 ~ + 45 deg. C		
Strong Temperature Range	- 40 ~ + 60 deg. C		
Resolution - Center	100 Line/mm		
- Corner	40 Line/mm		

UNLESS OTHERWISE SPECIFIED DIMENSIONS ARE IN INCHES AND INCLUDE CHEMICALLY APPLIED OR PLATED FINISHES	THE CONTENTS OF THIS DOCUMENT ARE PROPRIETARY TO NAVITAR, ITS USE IS AUTHORIZED ONLY FOR RESPONDING TO REQUEST FOR QUOTATION OR PERFORMANCE OF WORK FOR NAVITAR
SCALE: 1.5:1	
WEIGHT: See Table	
DR: BE	
CH:	
PROJECT #: E2338	
DATE DR: 7/13/2007	



LENS, 25.0mm FL, , 2/3", f/1.6	
SIZE B	NMV - 25 SHEET 1 OF 1
REV A	