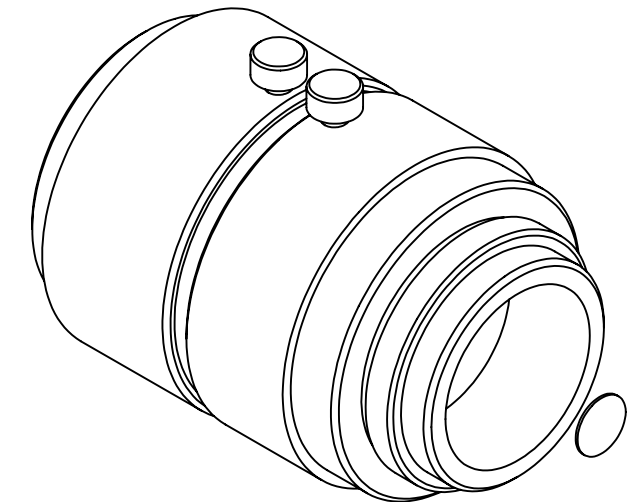
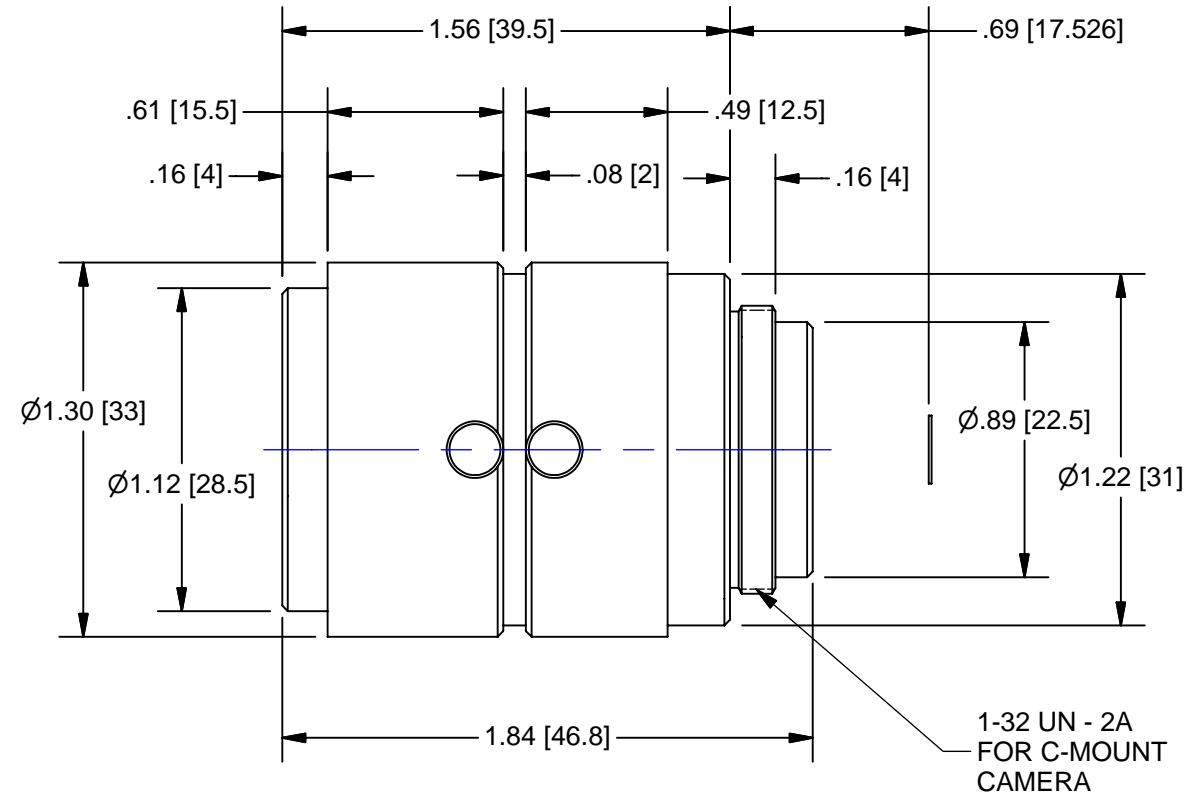
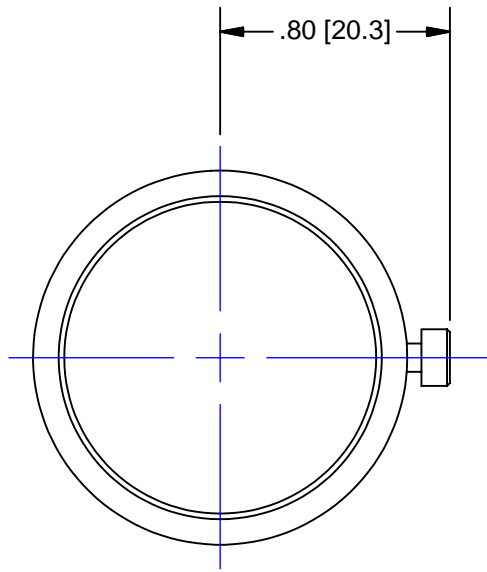


Pyramid Imaging

945 East 11th Avenue
 Tampa, FL 33605
sales@pyramidimaging.com
www.pyramidimaging.com
 813-786-3785



OUTLINE

Lens Specification - NMV - 25M23				
Specification		Value	1/2"	1/3"
Focal Length		f = 25mm		
Max. Diameter (Ratio)		F = 1:1.4 ~ 16		
Element		6 Group 8 Elements		
Picture Size		6.6 x 8.8mm	4.8 x 6.4mm	4.8 x 3.6mm
Angle	Vertical	14.8 deg.	10.5 deg.	7.9 deg.
	Horizontal	19.6 deg.	14.0 deg.	10.5 deg.
	Diagonal	24.3 deg.	17.5 deg.	13.2 deg.
Distortion (TV)		- 0.04%	-	
Shooting Range at Minimum Focus Distance	Vertical	53.3mm	38.7mm	29.0mm
	Horizontal	71.1mm	51.7mm	38.7mm
	Diagonal	89.0mm	64.6mm	48.4mm
Minimum Focus Distance		0.2m		
Flange Back Focus		17.526mm in air		
Back Focus		11.1mm in air		
Filter Screw Size		M27.0 x 0.5		
Effective Diameter	Front	24.0mm		
	Rear	12.8mm		
Mount		C-Mount		
Exit Pupil		- 80mm		
Temperature Range		-10 ~ +45 deg. C		
Strong Temperature Range		-40 ~ +60 deg. C		
Resolution	Center	100 Line/mm		
	Corner	80 Line/mm		
Weight		89g		

UNLESS OTHERWISE SPECIFIED DIMENSIONS ARE IN INCHES AND INCLUDE CHEMICALLY APPLIED OR PLATED FINISHES	
SCALE:	1.5:1
WEIGHT:	See Table
DR:	BE
CH:	
PROJECT #:	E2338
DATE DR:	7/11/2007

THE CONTENTS OF THIS DOCUMENT ARE PROPRIETARY TO NAVITAR, ITS USE IS AUTHORIZED ONLY FOR RESPONDING TO REQUEST FOR QUOTATION OR PERFORMANCE OF WORK FOR NAVITAR

DO NOT SCALE DRAWING

NAVITAR
 ROCHESTER, NEW YORK

LENS, 25mm FL, f/1.4, 2/3" MEGAPIXEL

SIZE	B	NMV - 25M23	REV	A
SHEET 1 OF 1				