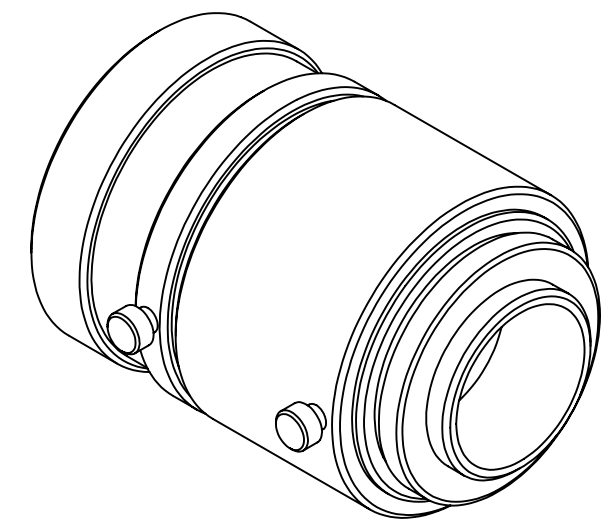
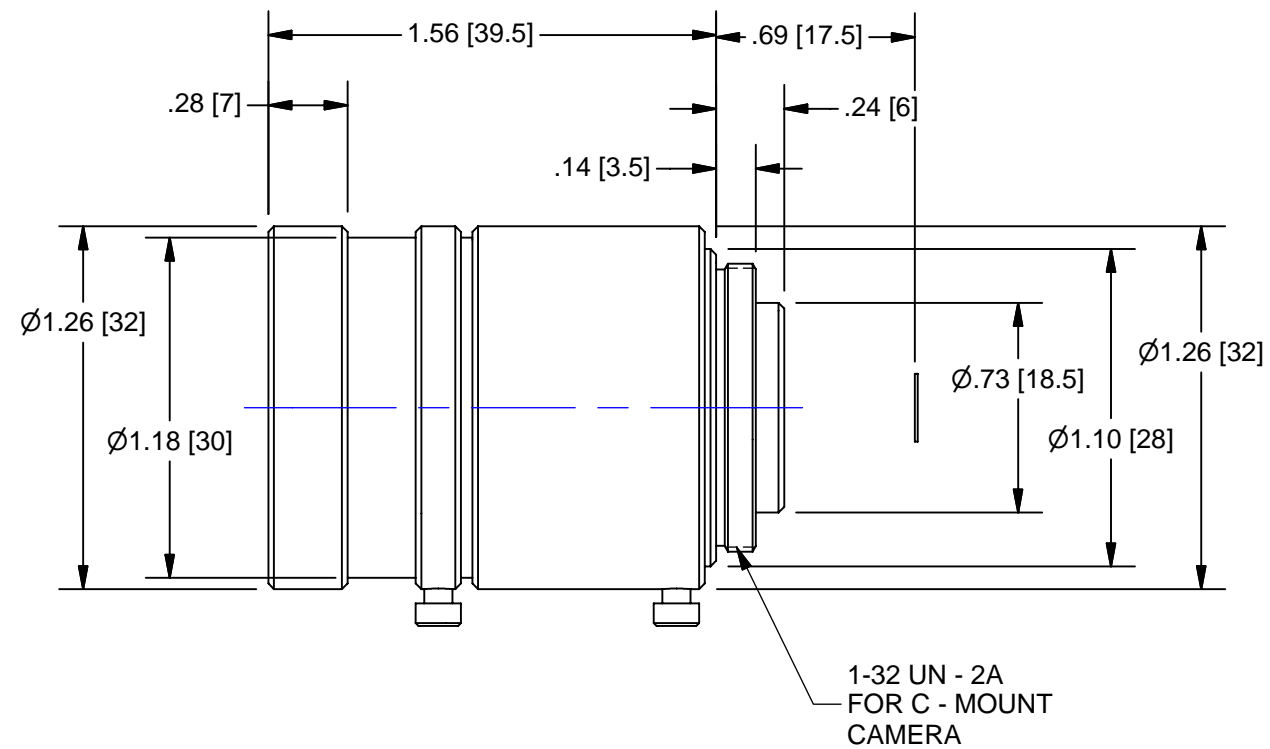
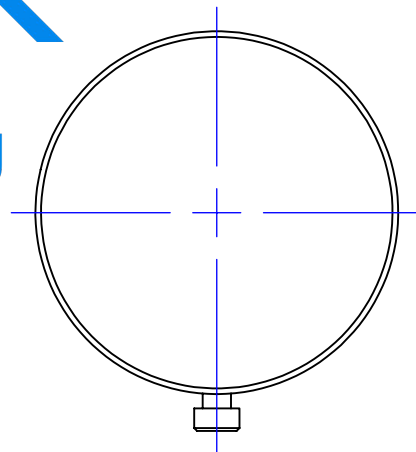


# Pyramid Imaging

945 East 11th Avenue  
 Tampa, FL 33605  
 sales@pyramidimaging.com  
 www.pyramidimaging.com  
 813-786-3785



## OUTLINE

Lens Specifications - NMV - 50			
Specifications	Value	1/2"	1/3"
Focal Length	f = 50mm		
Maximum diameter (Ratio)	F = 1:2.0 ~ 22 ~ Close		
Element	5gr. 6 Element		
Picture Size	6.6 x 8.8mm	4.8 x 6.4mm	3.6 x 4.8 mm
Angle - Vertical	7.6 deg.	5.5 deg.	4.1 deg.
Horizontal	10.1 deg.	7.3 deg.	5.5 deg.
Diagonal	12.6 deg.	9.2 deg.	6.9 deg.
Distortion	-16%	-12%	-0.09%
Shooting Range - Vertical	63.6mm	46.2mm	34.6mm
At Minimum - Horizontal	85.0mm	61.7mm	46.2mm
Focus Distance - Diagonal	106.6mm	77.2mm	57.8mm
Minimum Focus Distance	0.5m		
Flange Back	17.526mm in air		
Back Focus	17.2mm in air		
Filter Screw Size	M30.5 X 0.5		
Effective Diameter - Front	24.6mm dia.		
- Rear	15.4mm dia.		
Mount	C-Mount		
Exit Pupil	-42.0mm dia.		
Temperature Range	- 10 ~ + 45 deg. C		
Strong Temperature Range	- 40 ~ + 60 deg. C		
Resolution - Center	100 Line/mm		
- Corner	40 Line/mm		

UNLESS OTHERWISE SPECIFIED DIMENSIONS ARE IN INCHES AND INCLUDE CHEMICALLY APPLIED OR PLATED FINISHES	THE CONTENTS OF THIS DOCUMENT ARE PROPRIETARY TO NAVITAR, ITS USE IS AUTHORIZED ONLY FOR RESPONDING TO REQUEST FOR QUOTATION OR PERFORMANCE OF WORK FOR NAVITAR		
WEIGHT: See Table	DR: BE		
CH:	PROJECT #: E2338	DO NOT SCALE DRAWING	
DATE DR: 7/13/2007	SIZE B	<b>NMV - 50</b> SHEET 1 OF 1	
			REV A