

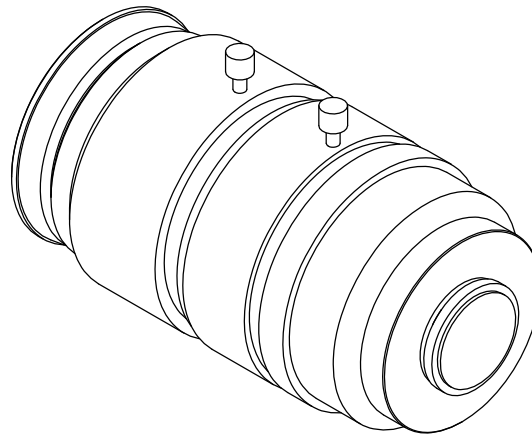
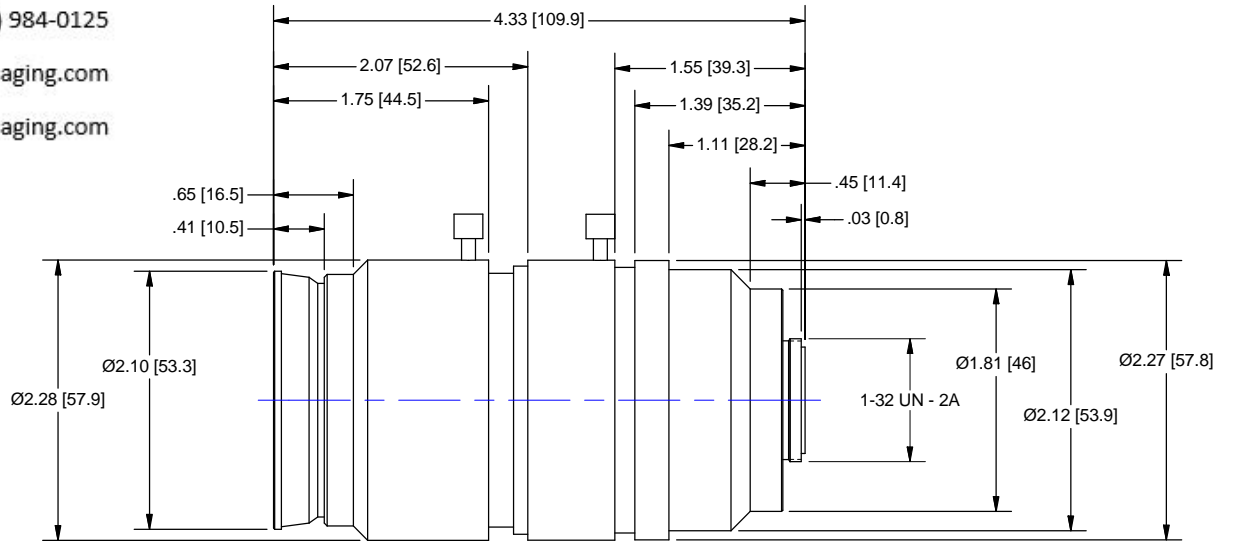
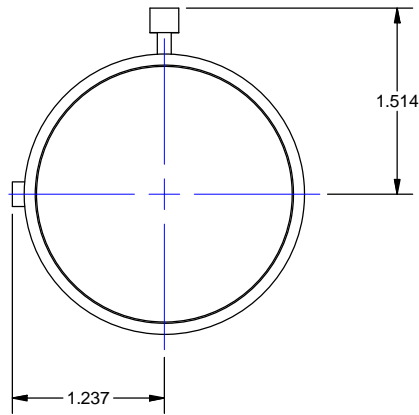


945 East 11th Avenue Tampa, FL 33605

Phone: (813) 984-0125

Contact: Sales@pyramidimaging.com

https://pyramidimaging.com



Lens Specifications - NMV - 6X8	
Specifications	Value - 1/2"
Focal Length	8 - 48mm
Maximum Aperture	1:1.0
Iris	F1.0 - Close
Zoom Ratio	6X
Angular Field of View	43.6 X 33.4 deg at 8mm 7.7 X 5.7 deg at 48mm
Image Format	6.4 X 4.8mm
Minimum Object Distance	1.0m
Object Dimensions at M.O.D.	74.3X54.9cm at 8mm (37.2X27.5cm at S.N) 12.3X9.3cm at 48mm (6.2X4.7cm at S.N)
Flange Back	17.526mm
Back Focus	14.56mm in air
Mount	C-Mount
Temperature Range	- 10 ~ +50 deg. C
Weight	395 g
Front Thread	M46x0.75

OUTLINE

UNLESS OTHERWISE SPECIFIED DIMENSIONS ARE IN INCHES AND INCLUDE CHEMICALLY APPLIED OR PLATED FINISHES		PROPRIETARY AND CONFIDENTIAL THE INFORMATION CONTAINED IN THIS DRAWING IS THE SOLE PROPERTY OF NAVITAR. ANY REPRODUCTION IN PART OR AS A WHOLE WITHOUT THE WRITTEN PERMISSION OF NAVITAR IS PROHIBITED.	
SCALE:	1:1	 ROCHESTER, NEW YORK	
WEIGHT:	N/A		
DR BY:	CJH		
CH BY:	BJC		
PROJECT #:	E2993	LENS, 8-48MM, F/1-CLOSE, MANUAL, 1/2"	
DATE DR:	9/20/2012		
DO NOT SCALE DRAWING		SIZE B	NMV-6X8 SHEET 1 OF 1
			REV A