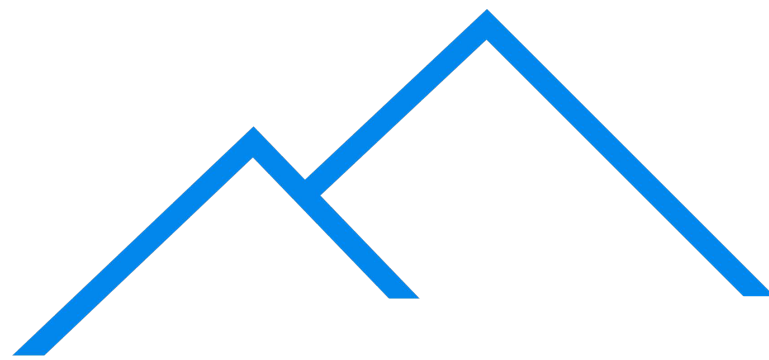


OUTLINE

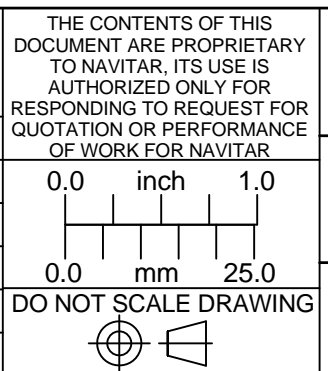
Lens specification - NMV - 8M23			
Specification	Value	1/2"	1/3"
Focal length	f = 8mm		
Max. diameter (Ratio)	F = 1:1.4 ~ 16		
Picture Size	6.6 x 8.8mm	4.8 x 6.4	4.8 x 3.6
Angle Vertical	43.9 deg.	32.5 deg.	24.6 deg.
Angle Horizontal	56.5 deg.	42.6 deg.	32.5 deg.
Angle Diagonal	67.0 deg.	52.1 deg.	40.2 deg.
Distortion (TV)	-0.6%	-0.3%	-0.28%
Working Dist. - 500mm	0.016x		
Optical Mag. 400mm	0.020x		
300mm	0.027x		
200mm	0.039x		
100mm	0.075x		
Minimum Focus Distance	0.1m		
Flange Back	17.526mm in air		
Back focus	9.5mm in air		
Filter Screw Size			
Effective Diameter - Front	17.2mm dia.		
Rear	14.6mm dia.		
Mount	C - Mount		
Exit Pupil	- 920mm		
Temperature Range	-10 ~ +45 deg. C		
Strong Temperature Range	-40 ~ +60 deg. C		
Resolution - Center	100 Line/mm		
Corner	100 Line/mm		
Weight	83g		



Pyramid Imaging

945 East 11th Avenue
 Tampa, FL 33605
sales@pyramidimaging.com
www.pyramidimaging.com
 813-786-3785

UNLESS OTHERWISE SPECIFIED DIMENSIONS ARE IN INCHES AND INCLUDE CHEMICALLY APPLIED OR PLATED FINISHES	THE CONTENTS OF THIS DOCUMENT ARE PROPRIETARY TO NAVITAR. ITS USE IS AUTHORIZED ONLY FOR RESPONDING TO REQUEST FOR QUOTATION OR PERFORMANCE OF WORK FOR NAVITAR
SCALE: 2:1	
WEIGHT: See Table	
DR: BE	
CH:	
PROJECT #: E2338	
DATE DR: 07/12/2007	



 ROCHESTER, NEW YORK	
LENS, 8mm FL, f/1.4, 2/3" MEGAPIXEL	
SIZE B	NMV - 8M23 SHEET 1 OF 1
REV A	