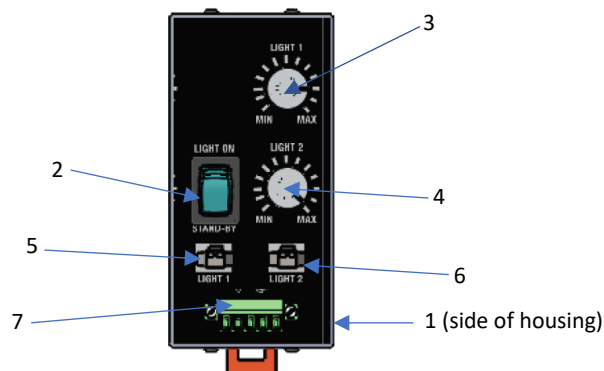


## LC2-PWM20



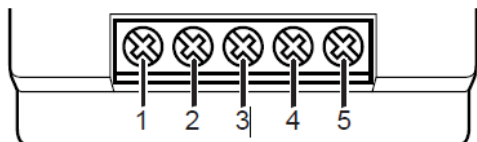
The LC2-PWM20 is a dual channel, pulsewidth modulated LED intensity controller. It outputs 12V PWM from 0-100% at 100kHz to drive LED loads with series limiting resistors. The maximum output is 20W per channel and 30W combined for two channels. Power is limited by the 24V power supply.

### LC2-PWM20 Functions / Controls



1	Power Limiter Switch (default setting is NORM) <ul style="list-style-type: none"> <li><b>NORM</b> – Limits light adjustment range to 0 to 60% to protect LED element. Always use the NORM setting when operating the device with continuous lighting by pushing the switch away from the face panel.</li> <li><b>FULL</b> – Allows an intensity adjustment range of 0 to 100% by pulling the switch towards the face panel.</li> </ul>
2	Standby Switch
3	Channel 1 intensity adjustment
4	Channel 2 intensity adjustment
5	Channel 1 output connector
6	Channel 2 output connector
7	Input Terminals

## Input Terminals

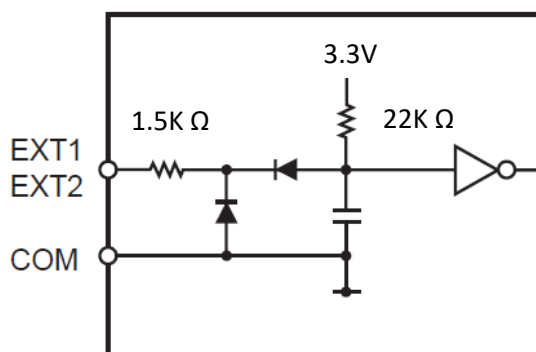


Compatible cables: AWG #14 to #22

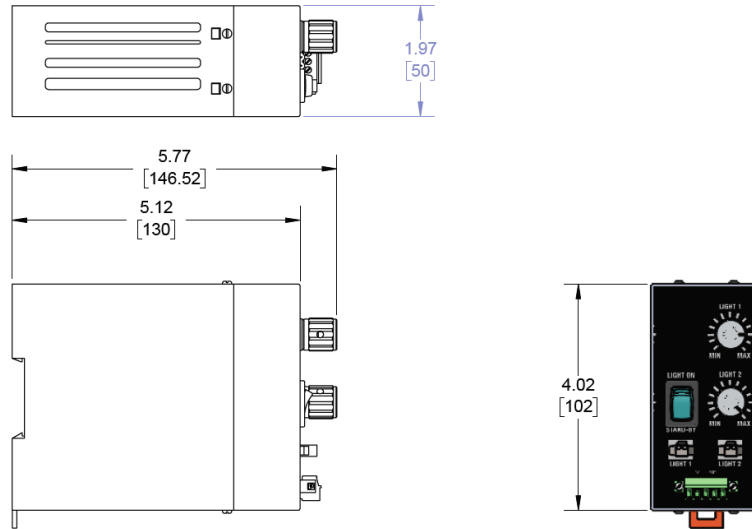
Terminal	Label	Description / Note
1	24 VDC	Power supply should be limited to 1.8A max
2	0V	Power Supply 24V RTN
3	COM	External control Common terminal
4	EXT 1	External control input channel 1 (0-24V) <ul style="list-style-type: none"> <li>Deactivates channel 1 when shorted to COM</li> </ul>
5	EXT 2	External control input channel 2 (0-24V) <ul style="list-style-type: none"> <li>Deactivates channel 2 when shorted to COM</li> </ul>

## Circuit Diagram

Input Terminals: EXT1, EXT2
Disable Output: 1.0V and less
Enable Output: 1.25V and higher or float



### Dimensions



### Specifications

LC2-PWM20		
OUTPUT	Intensity Control	Pulse Width Modulation @ 100kHz
	Connections	2 channels
	Voltage	12VDC PWM (not constant-current)
	Max LED Load	20W per channel, 30W combined total
INPUT	Power Supply	24VDC $\pm 10\%$ limited to 1.8A to protect Controller and LED load
ENVIRONMENTAL CONDITIONS	Temperature	0 to 45°C
	Humidity	0 to 85% RH (non-condensing)
	Weight	210 grams



945 East 11<sup>th</sup> Avenue Tampa, FL 33605

Phone: (813) 984-0125

Contact: Sales@pyramidimaging.com

<https://pyramidimaging.com>