

Monster Back Light 2"x2" Series



ELECTRICAL:

Input Voltage: See LDM350/2 spec
 Input Current: See LDM350/2 spec
 Connector: Quick Connect, 5 pin Reverse Key Euro / Micro

WARNING !!!

**Use Only Spectrum Illumination LDM Driver with Monster Lights.
 Do Not Connect Monster Lights Directly to 24VDC!**

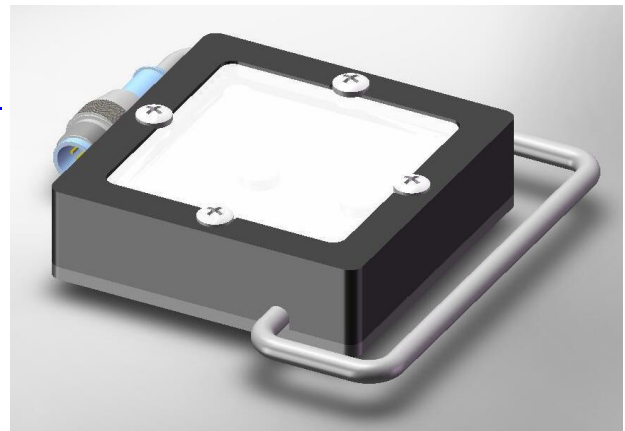
MECHANICAL:

Driver: DIN Rail Mount
 Dimensions: <http://www.spectrumillumination.com>

ILLUMINATION:

Light Source: LED – 4 Colors
 Quantity HB LED's: 4
 Light Emitting Pattern: 2" x 2" / 50mm x 50mm
 LED Life: up to 50,000 hours*.

*Contact us for LED life information



DIFFUSERS:

Polarizer – Option /P

PART NUMBER DESIGNATION:

MBL22-XXX

XXX = Light Color -470, -530, -630 & -WHI



Light includes LDM DIN rail mount constant current driver, 4-meter cable (driver is available with variable or 0-10VDC intensity control - cable also available in 8, 15 and 30-meter lengths).

| Color | Dash # | λ Dominant Typical | λ Dominant Range | Spectral Half-width $\Delta\lambda_{1/2}$ | λ Peak Typical | Units |
|-------|--------|----------------------------|--------------------------|-------------------------------------------|------------------------|-------|
| Red | -630 | 625 | 620 - 632 | 18 | 632 | nm |
| Green | -530 | 528 | 513 - 537 | 33 | 520 | nm |
| Blue | -470 | 470 | 464 - 476 | 25 | 465 | nm |
| White | -WHI | Color Temp 5600K typical | | | | |